

**GEOGRAPHIC AREAS LEGEND**

SYMBOL	NAME STYLE
*****	INTERNATIONAL
//////	STATE
□□□□□□	COUNTY
○	MINOR CIVIL DIV <sup>1</sup>
■	Incorporated Place <sup>1</sup>
■	Census Designated Place <sup>1</sup>
■	Voting District <sup>2</sup>
●	SLD-Senate
▲	SLD-House
□	Minority
□	Inset
□	Out Area

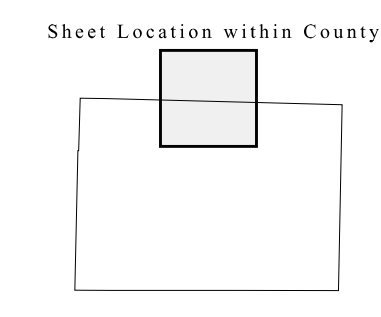
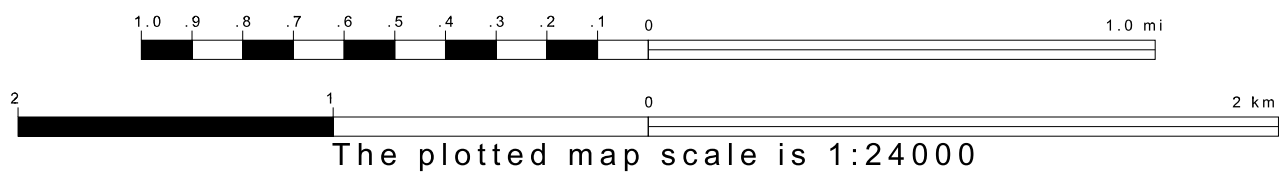
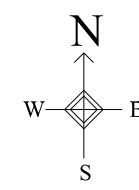
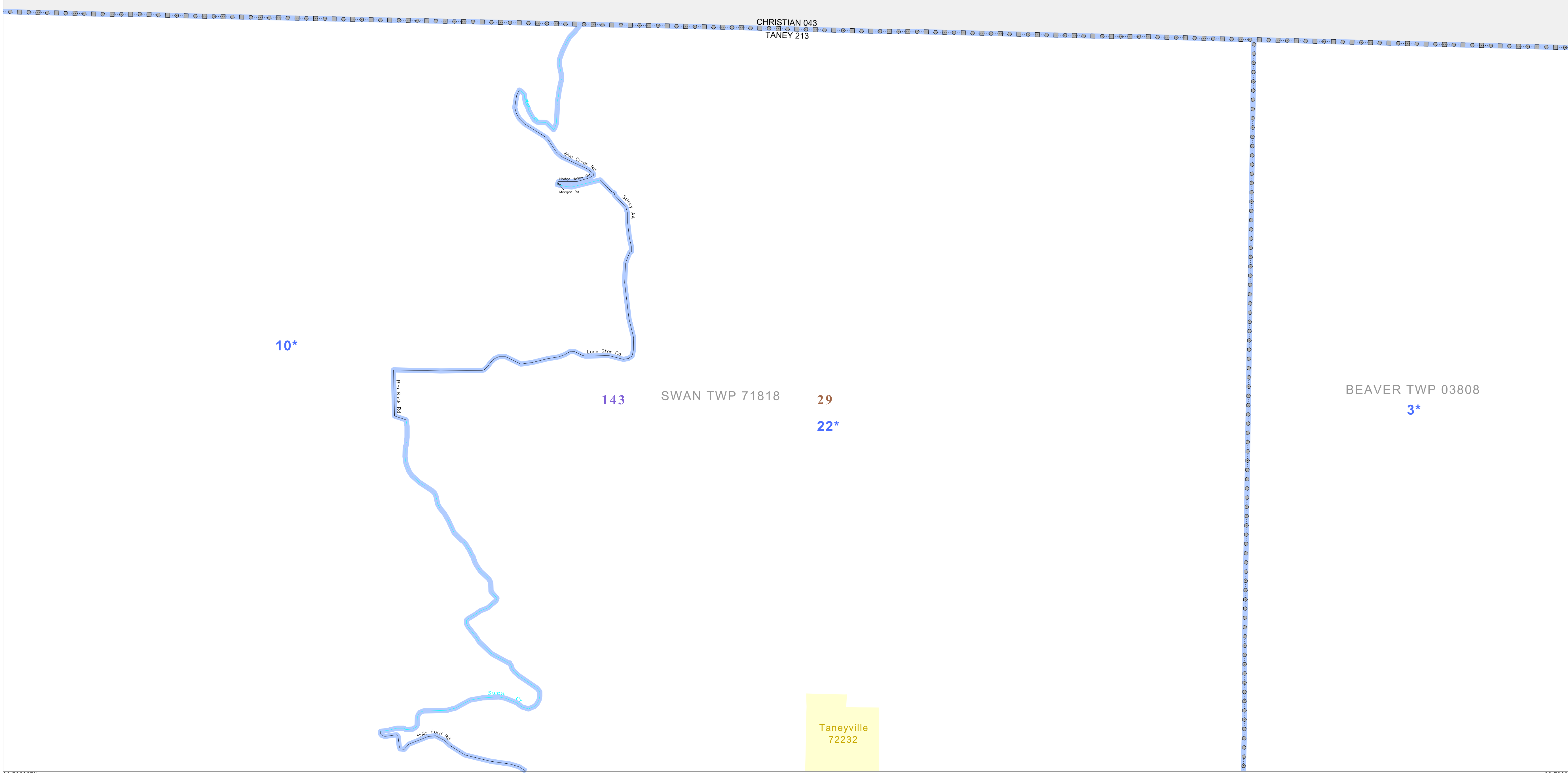
Abbreviation Reference: AIR = American Indian Reservation; SDAISA = State Designated American Indian Statistical Area

1 A "\*" following a place name indicates that the place is coterminous with a MCD. A "-" indicates that the place is also a false MCD. In both cases, the MCD name is shown only when it differs from the place name.

2 A "\*" following a VTD code indicates an actual voting district. Its absence indicates that the VTD is a pseudo voting district or no information is available as to its status.

**Voting Districts**

Code	Name
3*	Bradleyville Voting District
10*	Forsyth(Ward)
22*	Taneyville Voting District



Key to Adjacent Sheets

1	2	3
4	5	6

ST: Missouri (29)  
 COU: Taney (213)  
 SHEET 2 OF 9 PARENT SHEETS

