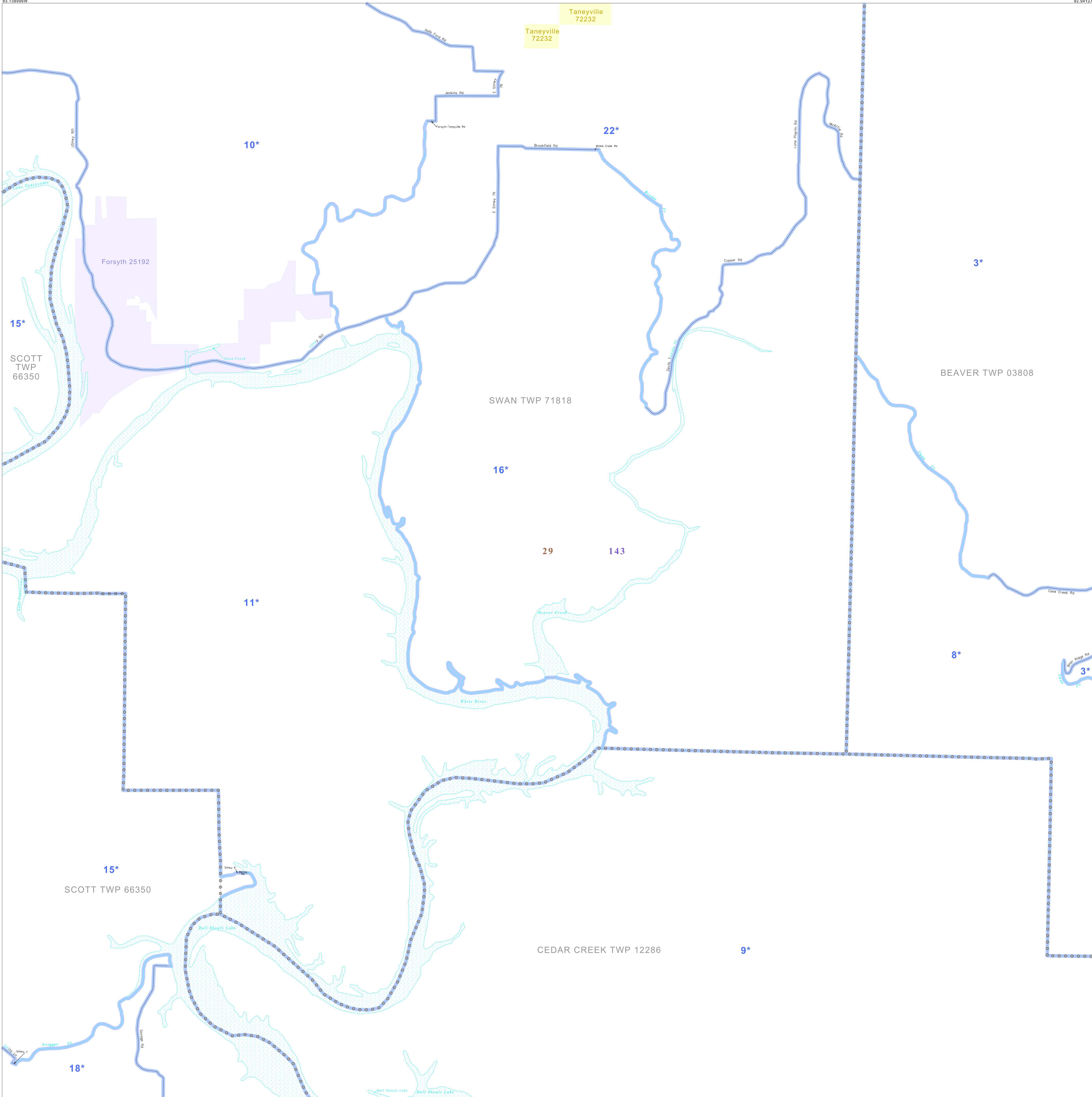


P.L. 94-171 VOTING DISTRICT/STATE LEGISLATIVE DISTRICT OUTLINE MAP (CENSUS 2000)

36 736967N
93 138998W

36 736967N
92 941277W



GEOGRAPHIC AREAS LEGEND

SYMBOL	NAME STYLE
*****	INTERNATIONAL
//////	STATE
□□□□	COUNTY
○	MINOR CIVIL DIV ¹
■	Incorporated Place ¹
■	Census Designated Place ²
—	Voting District
●●●●	SLD-Senate
▲▲▲▲	SLD-House

Abbreviation Reference: AIR - American Indian Reservation; SDAISA - State Designated American Indian Statistical Area

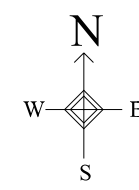
¹ A "*" following a place name indicates that the place is coterminous with a MCD. A "-" indicates that the place is also a false MCD. In both cases, the MCD name is shown only when it differs from the place name.
² A "*" following a VTD code indicates an actual voting district. Its absence indicates that the VTD is a pseudo voting district or no information is available as to its status.

Voting Districts

Code	Name
3*	Bradleyville Voting District
8*	Bryant Voting District
9*	CedarCreek Voting District
10*	ForsythWard1
11*	ForsythWard2
15*	Kirkville Voting District
16*	Knoxville Voting District
18*	Miney Voting District
22*	Taneyville Voting District

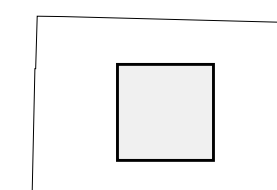
36 577657N
93 138998W

36 577657N
92 941277W



The plotted map scale is 1:24000

Sheet Location within County



Key to Adjacent Sheets

1	2	3
4	5	6
7	8	9

ST: Missouri (29)
 COU: Taney (213)
 SHEET 5 OF 9 PARENT SHEETS

