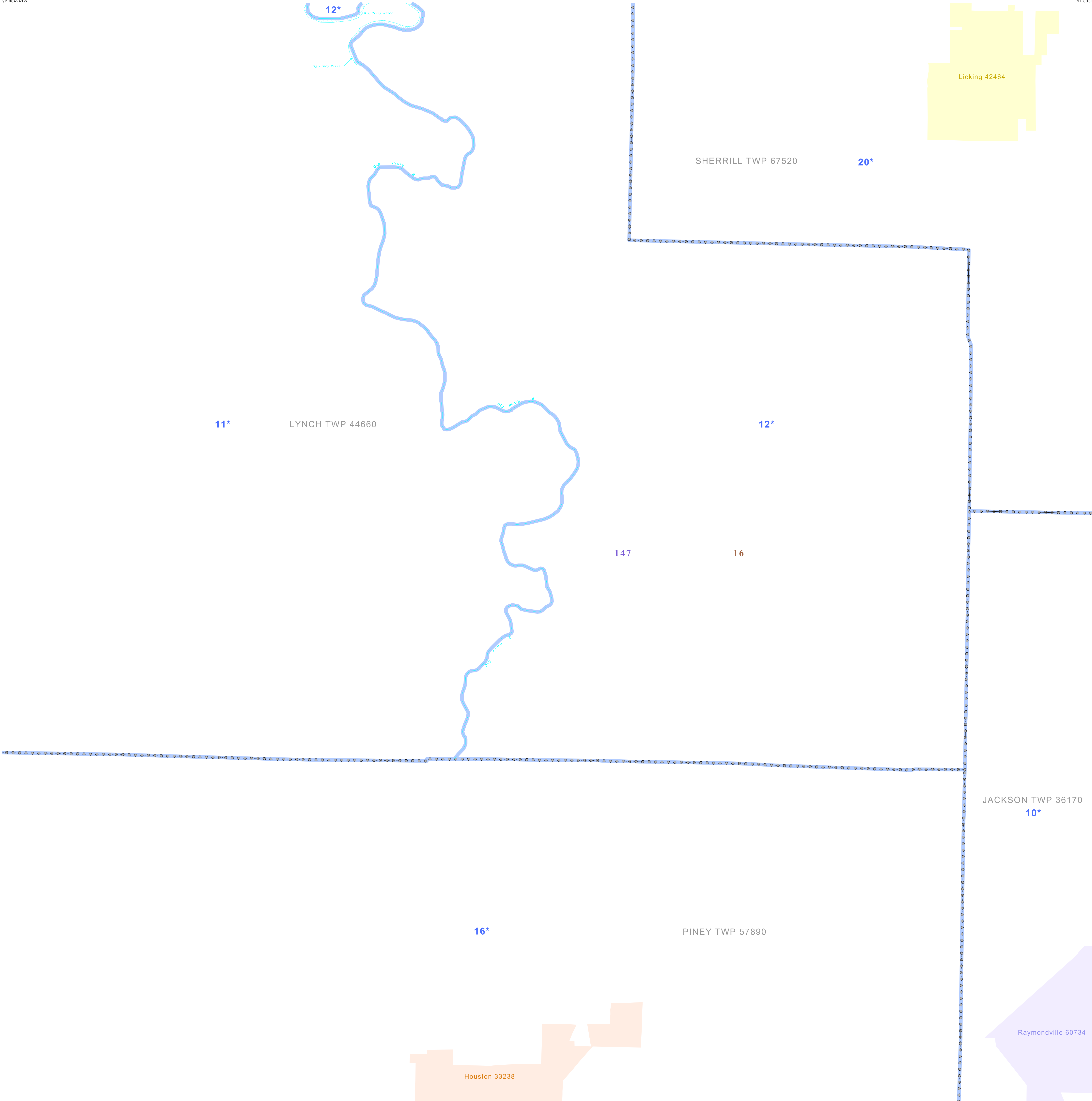


P.L. 94-171 VOTING DISTRICT/STATE LEGISLATIVE DISTRICT OUTLINE MAP (CENSUS 2000)

37 509549N  
92 064241W

37 509549N  
91 835693W



**GEOGRAPHIC AREAS LEGEND**

SYMBOL	NAME STYLE
*****	INTERNATIONAL
//////	STATE
□□□□□□	COUNTY
○	MINOR CIVIL DIV <sup>1</sup>
■	Incorporated Place <sup>1</sup>
■	Census Designated Place <sup>2</sup>
—	Voting District
●●●●●	SLD—Senate
▲▲▲▲▲	SLD—House

Abbreviation Reference: AIR = American Indian Reservation; SDAISA = State Designated American Indian Statistical Area

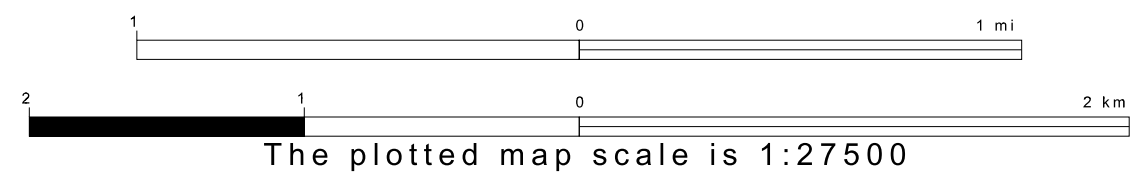
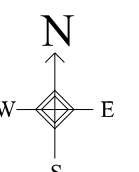
<sup>1</sup> A "\*" following a place name indicates that the place is coterminous with a MCD. A "-" indicates that the place is also a false MCD. In both cases, the MCD name is shown only when it differs from the place name.  
<sup>2</sup> A "\*" following a VTD code indicates an actual voting district. Its absence indicates that the VTD is a pseudo voting district or no information is available as to its status.

**Voting Districts**

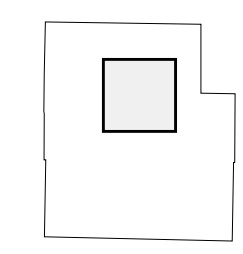
Code	Name
10*	Jackson Voting District
11*	Lynch Ward
12*	Lynch Ward
16*	Piney Voting District
20*	Sherrill Voting District

37 327027N  
92 064241W

37 327027N  
91 835693W



Sheet Location within County



Key to Adjacent Sheets

1	2	3
4	5	6
7	8	9

ST: Missouri (29)  
 COU: Texas (215)  
 SHEET 5 OF 12 PARENT SHEETS

