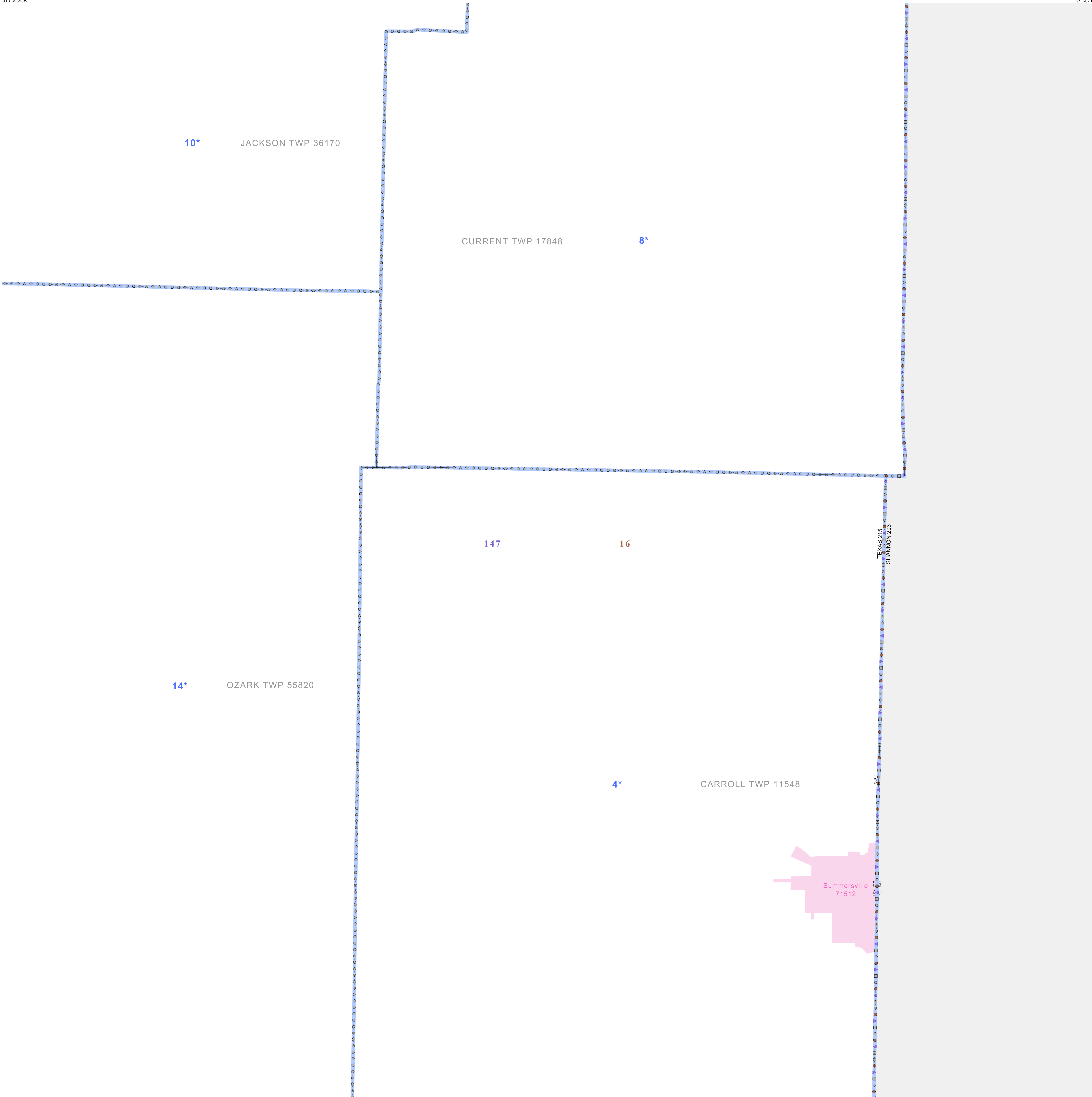


P.L. 94-171 VOTING DISTRICT/STATE LEGISLATIVE DISTRICT OUTLINE MAP (CENSUS 2000)

37 327027N
91 835893W

37 327027N
91 807145W



GEOGRAPHIC AREAS LEGEND

SYMBOL	NAME STYLE
*****	INTERNATIONAL
//////	STATE
□□□□□□	COUNTY
○●○●○●	MINOR CIVIL DIV. ¹
■ ■ ■ ■ ■ ■	Incorporated Place ¹
■ ■ ■ ■ ■ ■	Census Designated Place ¹
— — — — —	Voting District ²
●●●●●●	SLD-Senate
▲▲▲▲▲▲	SLD-House

Military Inset Out Area

Abbreviation Reference: AIR - American Indian Reservation; SDAISA - State Designated American Indian Statistical Area

¹ A "*" following a place name indicates that the place is coextensive with a MCD. A "-" indicates that the place is also a false MCD. In both cases, the MCD name is shown only when it differs from the place name.

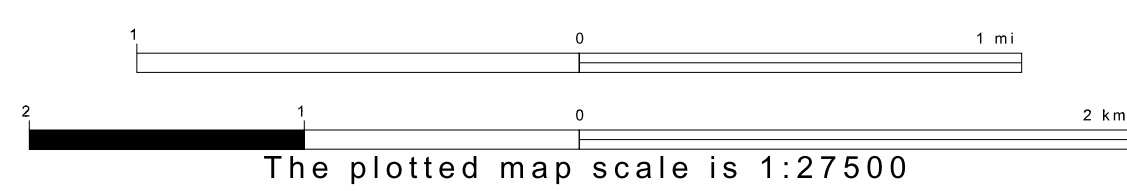
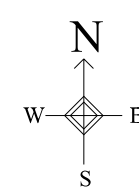
² A "*" following a VTD code indicates an actual voting district. Its absence indicates that the VTD is a pseudo voting district or no information is available as to its status.

Voting Districts

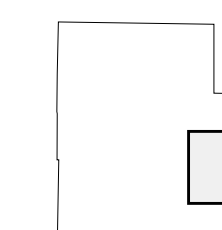
Code	Name
4*	Carroll Voting District
8*	Current Voting District
10*	Jackson Voting District
14*	Ozark Voting District

37 144505N
91 835893W

37 144505N
91 807145W



Sheet Location within County



Key to Adjacent Sheets

5	6
8	9
11	12

ST: Missouri (29)
COU: Texas (215)
SHEET 9 OF 12 PARENT SHEETS

