

CENSUS TRACT OUTLINE MAP (CENSUS 2000)

ABBREVIATED LEGEND

SYMBOL	NAME STYLE
☆☆☆☆☆	INTERNATIONAL
*****	AIR (FEDERAL)
◆◆◆◆◆	Trust Land
◇◇◇◇◇	OTSA / TDSA
◇◇◇◇◇	TRIBAL SUBDIVISION
///////	AIR (State)
◇◇◇◇◇	SDA/SA
#####	STATE
#####	COUNTY
○○○○○	MINOR CIVIL DIV' Consolidated City
■ ■ ■ ■ ■	Incorporated Place ¹
■ ■ ■ ■ ■	Census Designated Place ¹
■ ■ ■ ■ ■	Census Tract

Abbreviation Reference: AIR = American Indian Reservation; Trust Land = OTF-Reservation Trust Land; OTSA = Oklahoma Tribal Statistical Area; TDSA = Tribal Designated Statistical Area; Tribal Subdivision = American Indian Tribal Subdivision; SDA/SA = State Designated American Indian Statistical Area

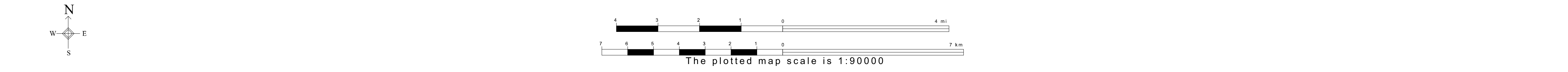
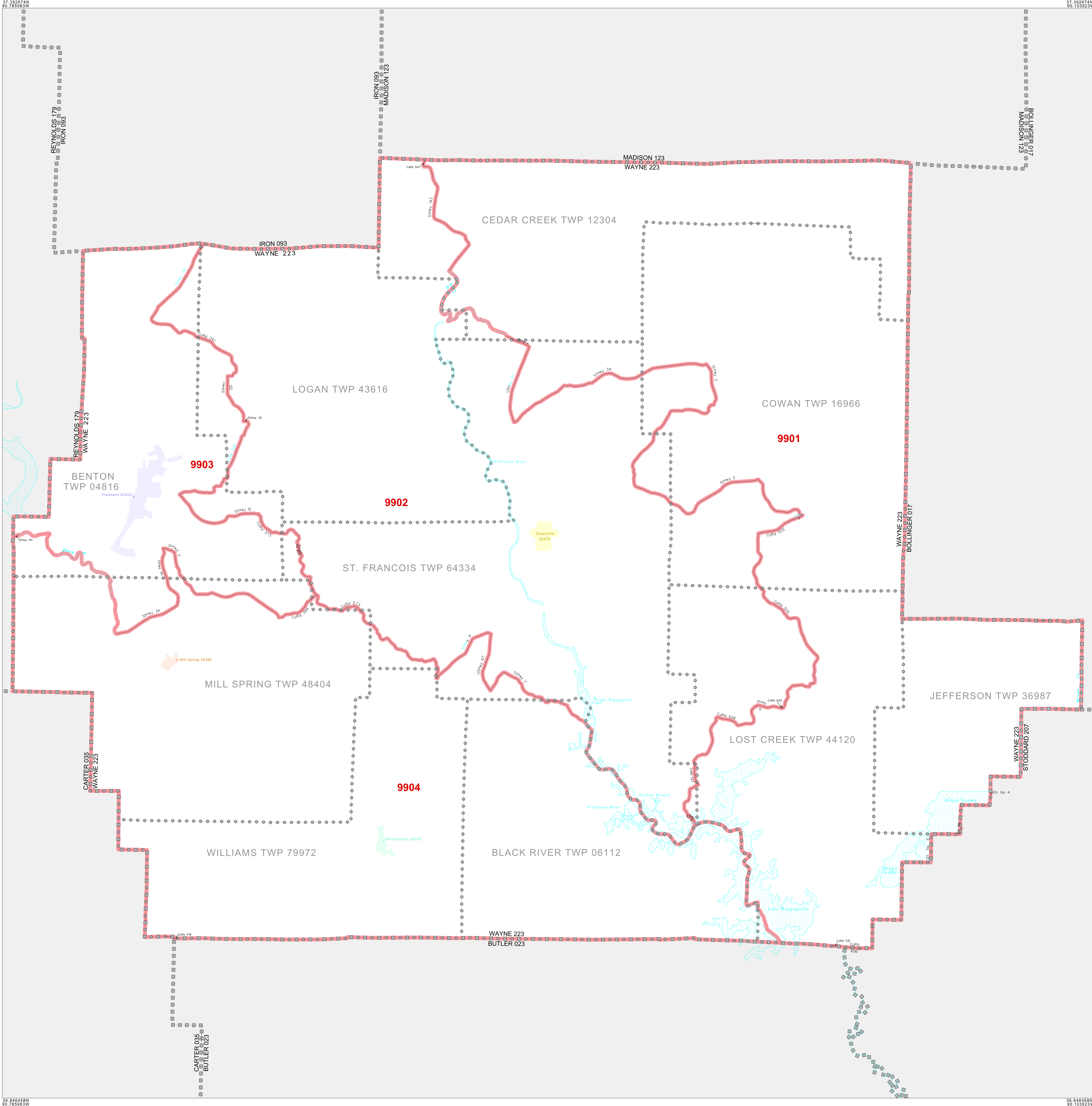
¹ A "*" following a place name indicates that the place is coterminous with a MCD. A "-" indicates that the place is also a false MCD. In both cases, the MCD name is shown only when it differs from the place name.

FEATURES	FEATURES
All Roads	Stream/Channel
Railroad	Intermittent Stream
Flow/Phase Line	River/Lake
Physical Feature	Glacier
Visible Boundary	

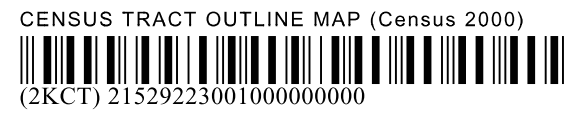
Military

Inset

Out Area



ST: Missouri (29)
 COU: Wayne (223)
 SHEET 1 OF 1 PARENT SHEET



All legal boundaries and names are as of January 1, 2000. The boundaries shown on this map are for Census Bureau statistical data collection and tabulation purposes only; their depiction and designation for statistical purposes does not constitute a determination of jurisdictional authority or rights of ownership or entitlement. U.S. DEPARTMENT OF COMMERCE Economics and Statistics Administration U.S. Census Bureau