

P. L. 94-171 COUNTY BLOCK MAP (CENSUS 2000)

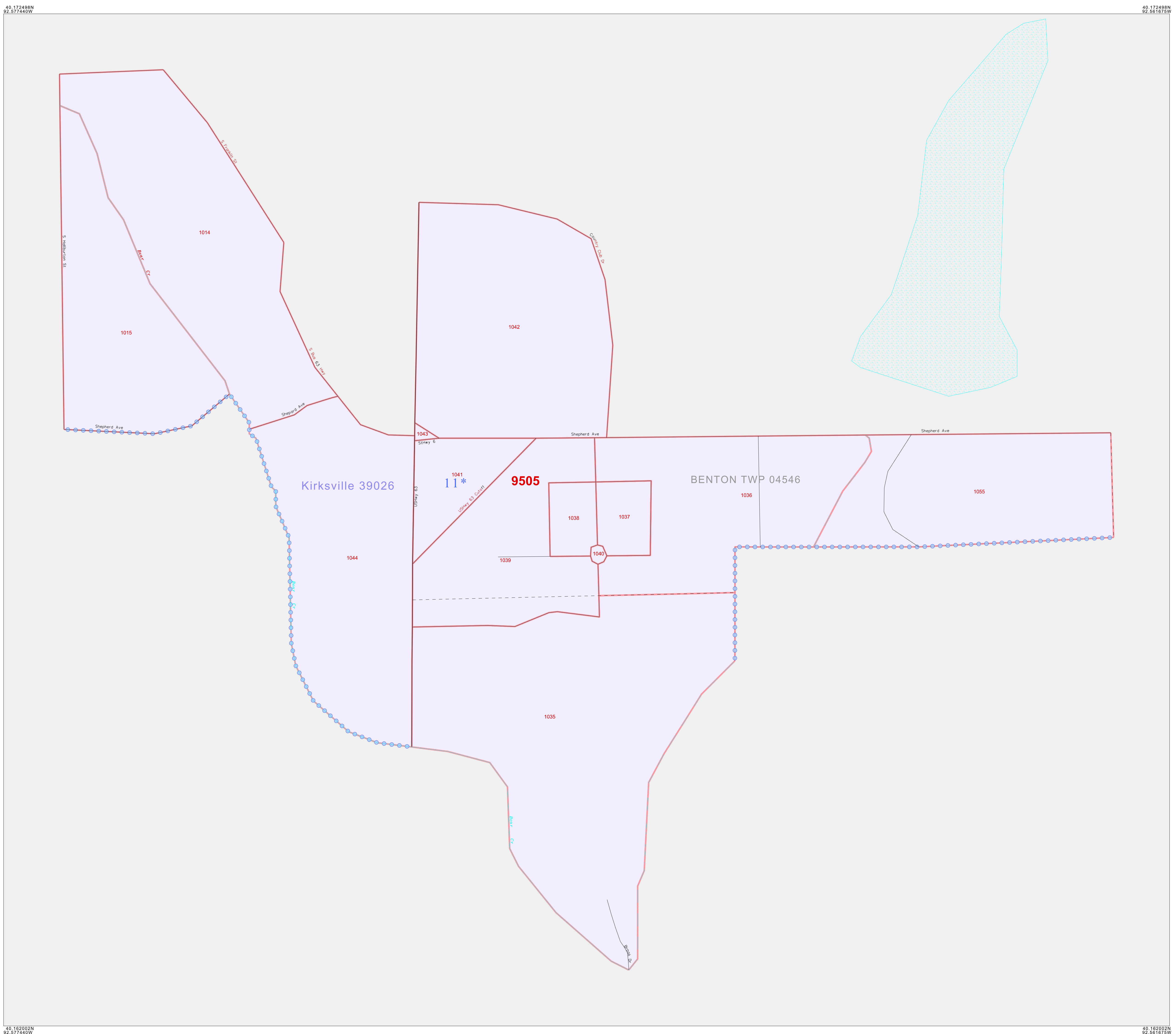
GEOGRAPHIC AREAS LEGEND

SYMBOL	NAME STYLE
*****	INTERNATIONAL
///////	STATE
■■■■■	COUNTY
●●●●●	MINOR CIVIL DIV ¹
■ ■ ■ ■ ■	Incorporated Place ²
■ ■ ■ ■ ■	Census Designated Place ²
-----	Corporate Offset Boundary
●●●●●	Voting District ³
■■■■■	Census Tract
■■■■■	BLOCK ³
■ ■ ■ ■ ■	Military
Inset	Inset
Out Area	Out Area

1 A "*" following a place name indicates that the place is coterminous with a MCD. A "-" indicates that the place is also a false MCD. In both cases, the MCD name is shown only when it differs from the place name.

2 A "*" following a VTD code indicates an actual voting district. Its absence indicates that the VTD is a pseudo voting district or no information is available as to its status.

3 A "*" following a block number indicates that the block number is repeated elsewhere in the block.



40.162022N 92.577465W

40.172488N 92.561675W

40.162022N 92.577465W

40.162022N 92.561675W

Sheet Location within County

Key to Adjacent Sheets

ST: Missouri (29)
COU: Adair (001)
INSET SHEET C01

The plotted map scale is 1:2000

All legal boundaries and names are as of January 1, 2000. The boundaries shown on this map are for Census Bureau statistical data collection and tabulation purposes only; their depiction and designation for statistical purposes does not constitute a determination of jurisdictional authority or rights of ownership or entitlement. U.S. DEPARTMENT OF COMMERCE Economics and Statistics Administration U.S. Census Bureau