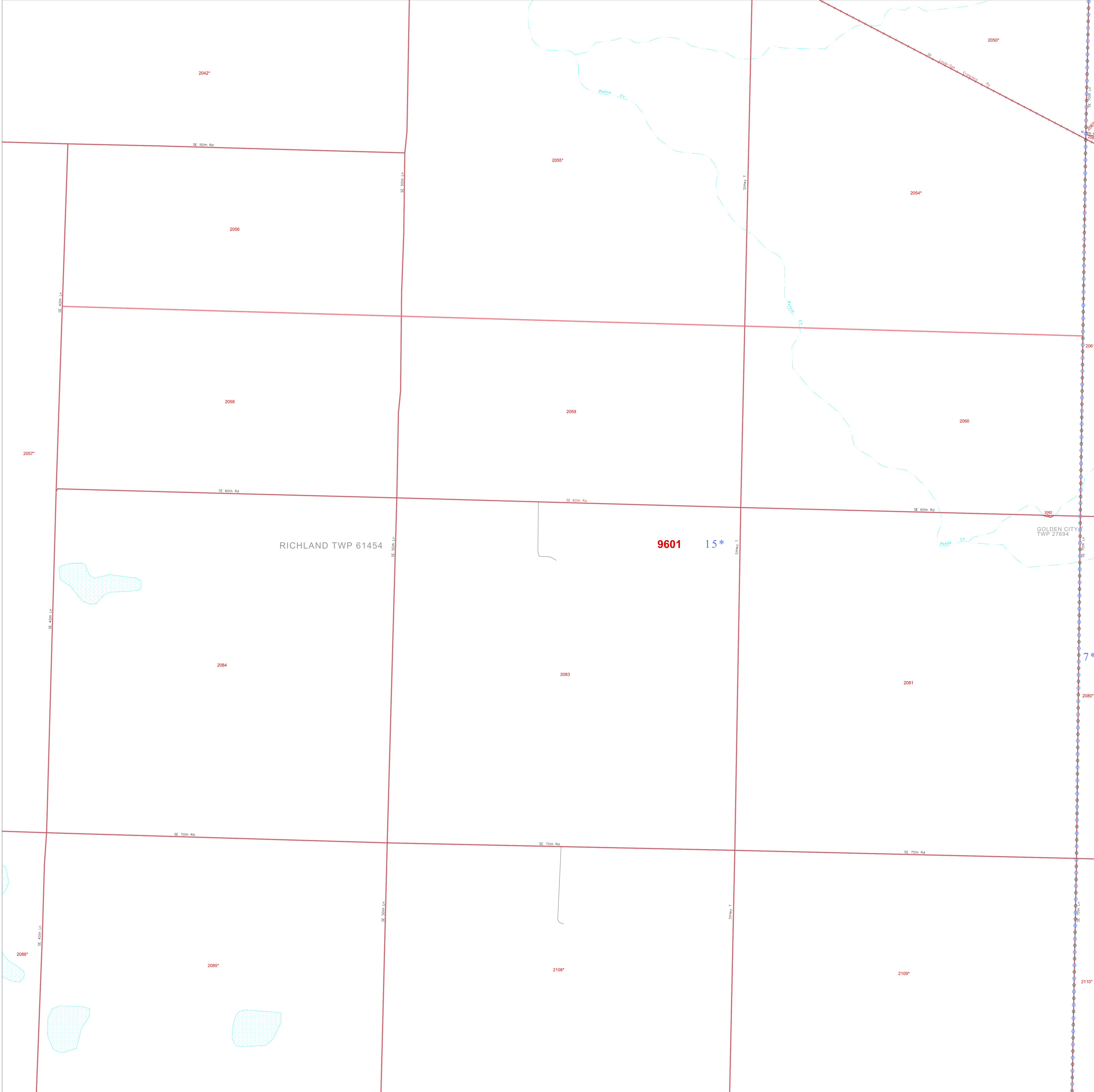


P. L. 94-171 COUNTY BLOCK MAP (CENSUS 2000)

37 431764N
94 228969W

37 431764N
94 170688W



GEOGRAPHIC AREAS LEGEND

SYMBOL	NAME STYLE
*****	INTERNATIONAL
//////	STATE
□□□□	COUNTY
□□□□	MINOR CIVIL DIV ¹
■ ■ ■ ■	Incorporated Place ²
■ ■ ■ ■	Census Designated Place ²
.....	Corporate Offset Boundary
●●●●	Voting District ³
—	Census Tract
—	BLOCK ³
.....	Military

Inset Out Area

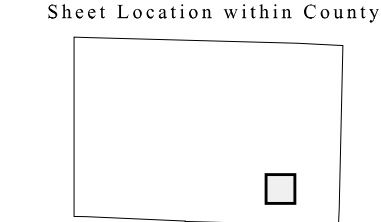
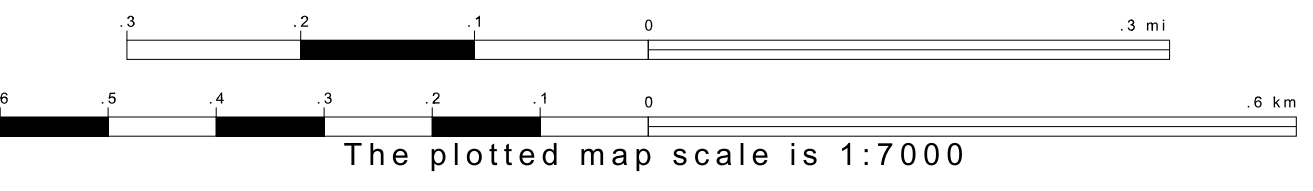
1 A "*" following a place name indicates that the place is coterminous with a MCD. "A*" indicates that the place is also a false MCD. In both cases, the MCD name is shown only when it differs from the place name.

2 A "*" following a VTD code indicates an actual voting district. Its absence indicates that the VTD is a pseudo voting district or no information is available as to its status.

3 A "*" following a block number indicates that the block number is repeated elsewhere in the block.

37 388305N
94 228969W

37 388305N
94 170688W



ST: Missouri (29)
COU: Barton (011)
SHEET 58 OF 70 PARENT SHEETS

All legal boundaries and names are as of January 1, 2000. The boundaries shown on this map are for Census Bureau statistical data collection and tabulation purposes only; their depiction and designation for statistical purposes does not constitute a determination of jurisdictional authority or rights of ownership or entitlement. U.S. DEPARTMENT OF COMMERCE Economics and Statistics Administration U.S. Census Bureau

