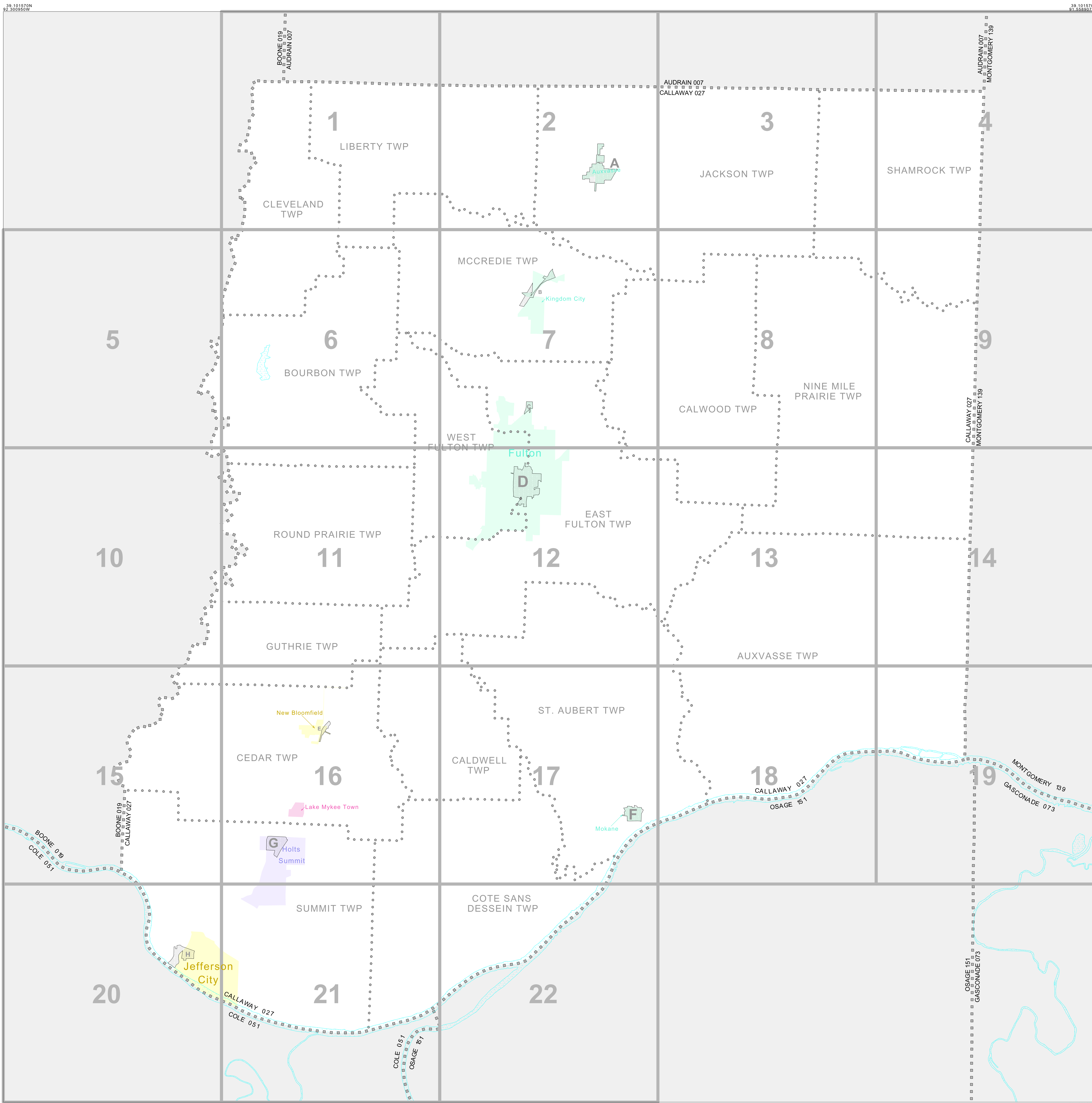


INDEX FOR P.L. 94-171 COUNTY BLOCK MAP (CENSUS 2000)



### INDEX MAP LEGEND

SYMBOL	NAME STYLE
*****	INTERNATIONAL
-----	AIR (FEDERAL)
-----	Trust Land/HLL
-----	OTSA/ANVSA/TDSA
-----	TRIBAL SUBDIVISION
-----	AIR (State)
-----	SDA/SA
-----	ANRC
	STATE
	COUNTY
o-o-o-o-o	MINOR CIVIL DIV. <sup>1</sup>
o-o-o-o-o	Consolidated City
o-o-o-o-o	Incorporated Place <sup>1</sup>
o-o-o-o-o	Census Designated Place <sup>1</sup>
[Inset]	Inset
[Out Area]	Out Area

Abbreviation Reference: AIR = American Indian Reservation; Trust Land = Off-Reservation Trust Land; ANRC = Alaska Native Regional Corporation; OTSA = Tribal Designated Statistical Area; Tribal Subdivision = American Indian Tribal Subdivision; SDA/SA = State Designated American Indian Statistical Area; ANRC = Alaska Native Regional Corporation

<sup>1</sup> A "\*" following a place name indicates that the place is coextensive with a MCD. A "C" indicates that the place is also a false MCD. In both cases, the MCD name is shown only when it differs from the place name.

### P.L. 94-171 COUNTY BLOCK MAP LEGEND (CENSUS 2000)

SYMBOL DESCRIPTION	SYMBOL	NAME STYLE
International	*****	CANADA
American Indian Reservation (Federal)	*****	L'ANSE RES (1880)
Off-Reservation Trust Land, Hawaiian Home Land	*****	T1880
Oklahoma Tribal Statistical Area, Alaska Native Village Statistical Area, Tribal Designated Statistical Area	o-o-o-o-o	KAW OTSA (5340)
American Indian Tribal Subdivision	o-o-o-o-o	SHONTO (620)
American Indian Reservation (State)	o-o-o-o-o	Tama Res (4125)
State Designated American Indian Statistical Area	o-o-o-o-o	Lumbee (9815)
Alaska Native Regional Corporation	o-o-o-o-o	NANA ANRC 52120
State or Statistically Equivalent Entity	o-o-o-o-o	NEW YORK 36
County or Statistically Equivalent Entity	o-o-o-o-o	ERIE 029
Minor Civil Division (MCD) <sup>1</sup>	o-o-o-o-o	PIKE TWP 59742
Census County Division (CCD)	o-o-o-o-o	KULA CCD 91890
Consolidated City	o-o-o-o-o	Milford 47500
Incorporated Place <sup>1</sup>	o-o-o-o-o	Rome 63418
Census Designated Place (CDP) <sup>1</sup>	o-o-o-o-o	Zena 84187
Corporate Offset Boundary	o-o-o-o-o	
Voting District (VTD) <sup>2</sup>	o-o-o-o-o	023*
Census Tract	o-o-o-o-o	5702.01
Block <sup>3</sup>	o-o-o-o-o	1320

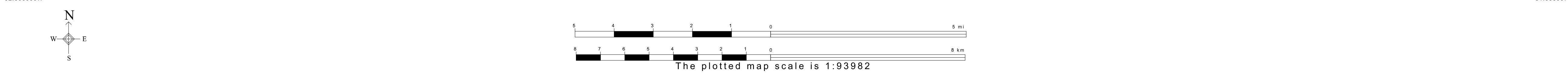
FEATURE	SYMBOL	FEATURE	SYMBOL
Interstate or Other Highway	-----	Perennial Stream or Shoreline	~~~~~
Secondary Road	-----	Intermittent Stream or Shoreline	~~~~~
Jeep Trail, Walkway, Stairway, or Ferry	-----	Large River or Lake	~~~~~
Railroad	-----	Glacier	~~~~~
Pipelining or Power Line	-----	Military Installation	~~~~~
Ridge, Fence, or Other Physical Feature	-----	Inset Area	~~~~~
Property Line or Fence Line	-----	Outside Subject Area	~~~~~
Nonvisible Boundary or Feature Not Elsewhere Classified	-----		

Where international, state, and/or county boundaries coincide, the map shows the boundary symbol for only the highest-ranking of these boundaries.

<sup>1</sup> A "\*" following a place name indicates that the place is coextensive with a MCD. A "C" following an incorporated place name indicates that the place is also a false MCD. In both cases, the MCD name is shown only when it differs from the place name.

<sup>2</sup> A "\*" following a VTD code indicates an actual voting district. Its absence indicates that the VTD is a pseudo voting district or no information is available as to its status.

<sup>3</sup> A "\*" following a block number indicates that the block number is repeated elsewhere in the block.



All legal boundaries and names are as of January 1, 2000. The boundaries shown on this map are for Census Bureau statistical data collection and tabulation purposes only; their depiction and designation for statistical purposes does not constitute a determination of jurisdictional authority or rights of ownership or entitlement. U.S. DEPARTMENT OF COMMERCE Economics and Statistics Administration U.S. Census Bureau