

P.L. 94-171 VOTING DISTRICT/STATE LEGISLATIVE DISTRICT OUTLINE MAP (CENSUS 2000)

GEOGRAPHIC AREAS LEGEND

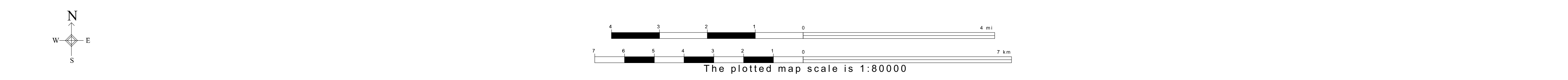
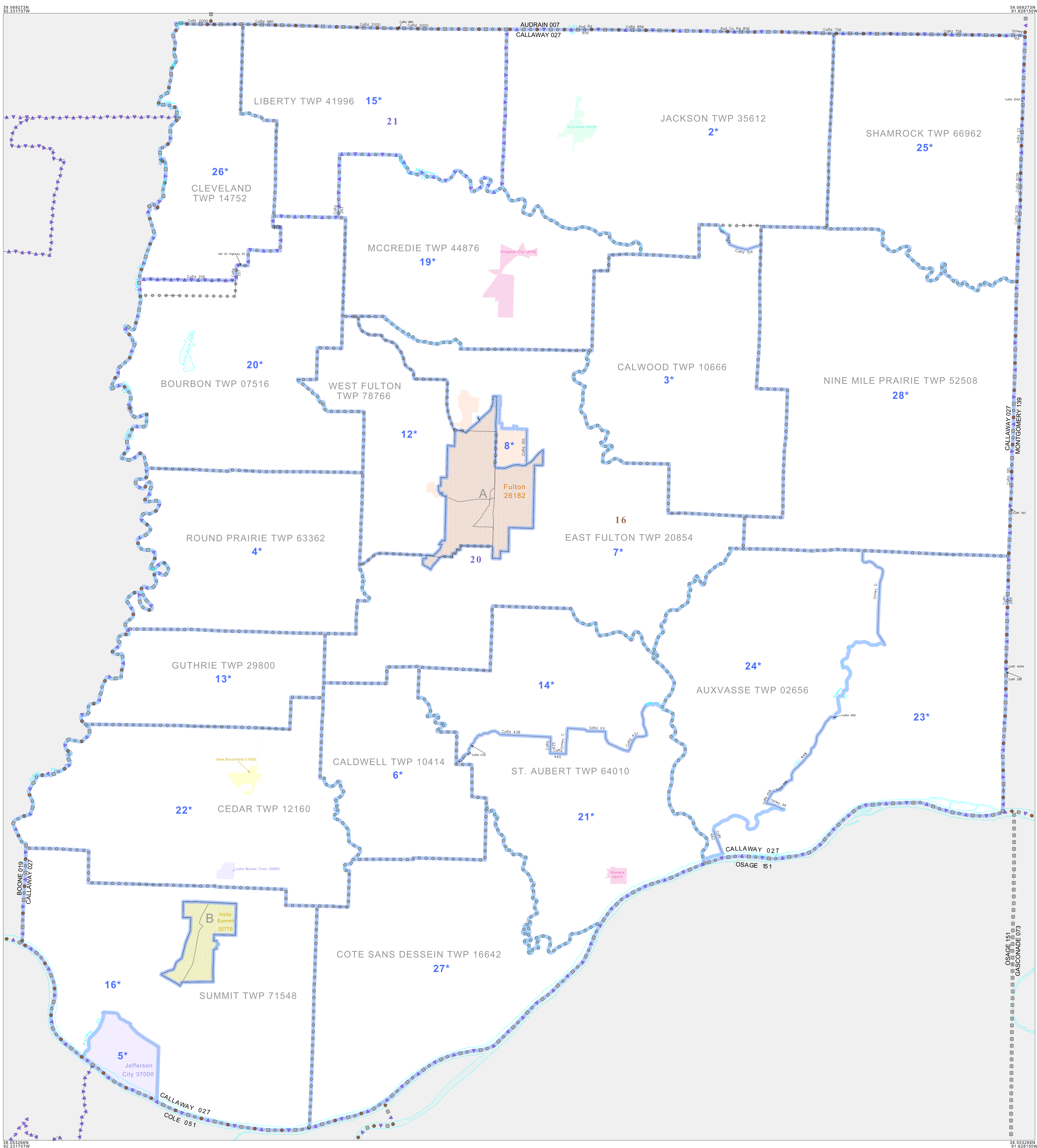
SYMBOL	NAME STYLE
*****	INTERNATIONAL
=====	STATE
=====	COUNTY
=====	MINOR CIVIL DIV ¹
=====	Incorporated Place ¹
=====	Census Designated Place ²
=====	Voting District
=====	SLD-Senate
=====	SLD-House

Abbreviation Reference: AIR - American Indian Reservation; SDAISA - State Designated American Indian Statistical Area

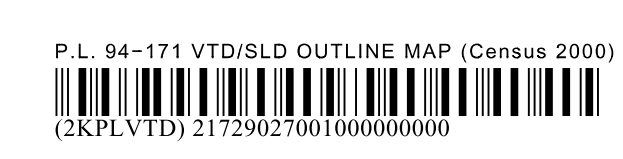
¹ A - * following a place name indicates that the place is coterminous with a MCD. A - ** indicates that the place is also a false MCD. In both cases, the MCD name is shown only when it differs from the place name.
² A - * following a VTD code indicates an actual voting district. Its absence indicates that the VTD is a pseudo voting district or no information is available as to its status.

Voting Districts

Code	Name
1*	Auxvasse Voting District
2*	Callaway Voting District
3*	Carrollton Voting District
4*	CedarCity Voting District
5*	Dixon Voting District
6*	FallenEast Voting District
7*	FallenWest Voting District
8*	FallenWest Voting District
9*	Guthrie Voting District
10*	Hansberry Voting District
11*	Hutton Voting District
12*	Hutchinson Voting District
13*	McCrede Voting District
14*	Millersburg Voting District
15*	Mokane Voting District
16*	NewBloomfield Voting District
17*	Parish Voting District
18*	Readsville Voting District
19*	Shamrock Voting District
20*	Stephens Voting District
21*	Tabbets Voting District
22*	Williamsburg Voting District



ST: Missouri (29)
 COU: Callaway (027)
 SHEET 1 OF 1 PARENT SHEET



All legal boundaries and names are as of January 1, 2000. The boundaries shown on this map are for Census Bureau statistical data collection and tabulation purposes only; their depiction and designation for statistical purposes does not constitute a determination of jurisdictional authority or rights of ownership or entitlement. U.S. DEPARTMENT OF COMMERCE Economics and Statistics Administration U.S. Census Bureau