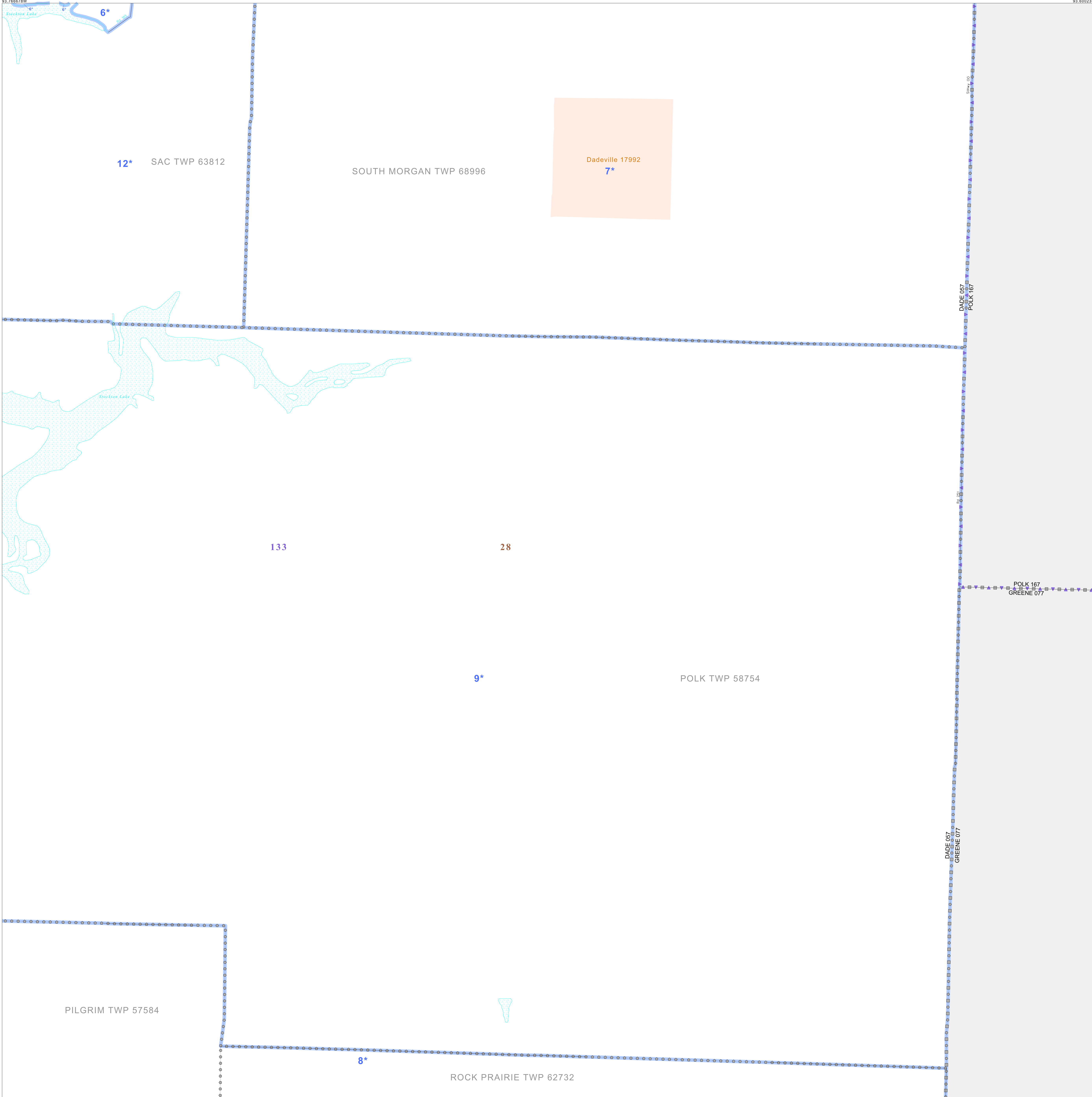


P.L. 94-171 VOTING DISTRICT/STATE LEGISLATIVE DISTRICT OUTLINE MAP (CENSUS 2000)

37 498125N  
93.766875W

37 498125N  
93.600230W



### GEOGRAPHIC AREAS LEGEND

SYMBOL	NAME STYLE
*****	INTERNATIONAL
//////	STATE
□□□□	COUNTY
○●○●	MINOR CIVIL DIV. <sup>1</sup>
■	Incorporated Place <sup>1</sup>
■	Census Designated Place <sup>1</sup>
—	Voting District <sup>2</sup>
●●●●	SLD-Senate
▲▲▲▲	SLD-House

Abbreviation Reference: AIR - American Indian Reservation; SDAISA - State Designated American Indian Statistical Area

1 A - \* following a place name indicates that the place is coterminous with a MCD. A - \* indicates that the place is also a false MCD. In both cases, the MCD name is shown only when it differs from the place name.

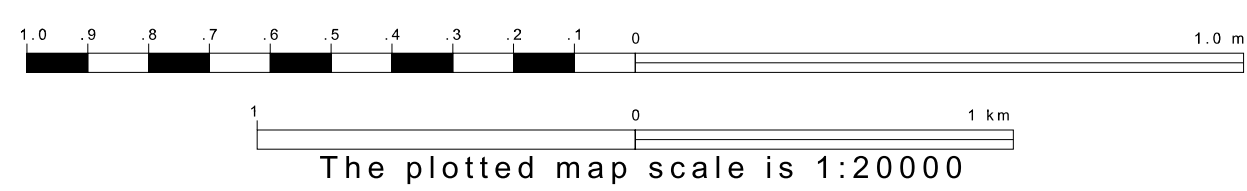
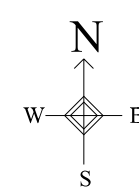
2 A - \* following a VTD code indicates an actual voting district. Its absence indicates that the VTD is a pseudo voting district or no information is available as to its status.

### Voting Districts

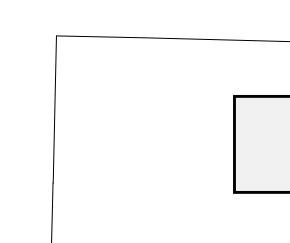
Code	Name
6*	NorthNorthSac Voting District
7*	NorthSouthMorgan Voting District
8*	PilgrimRockPrairie Voting District
9*	Polk Voting District
12*	WestCuster'Sac Voting District

37 365384N  
93.766875W

37 365384N  
93.600230W



Sheet Location within County



Key to Adjacent Sheets

2	3
5	6
8	9

ST: Missouri (29)  
COU: Dade (057)  
SHEET 6 OF 9 PARENT SHEETS

