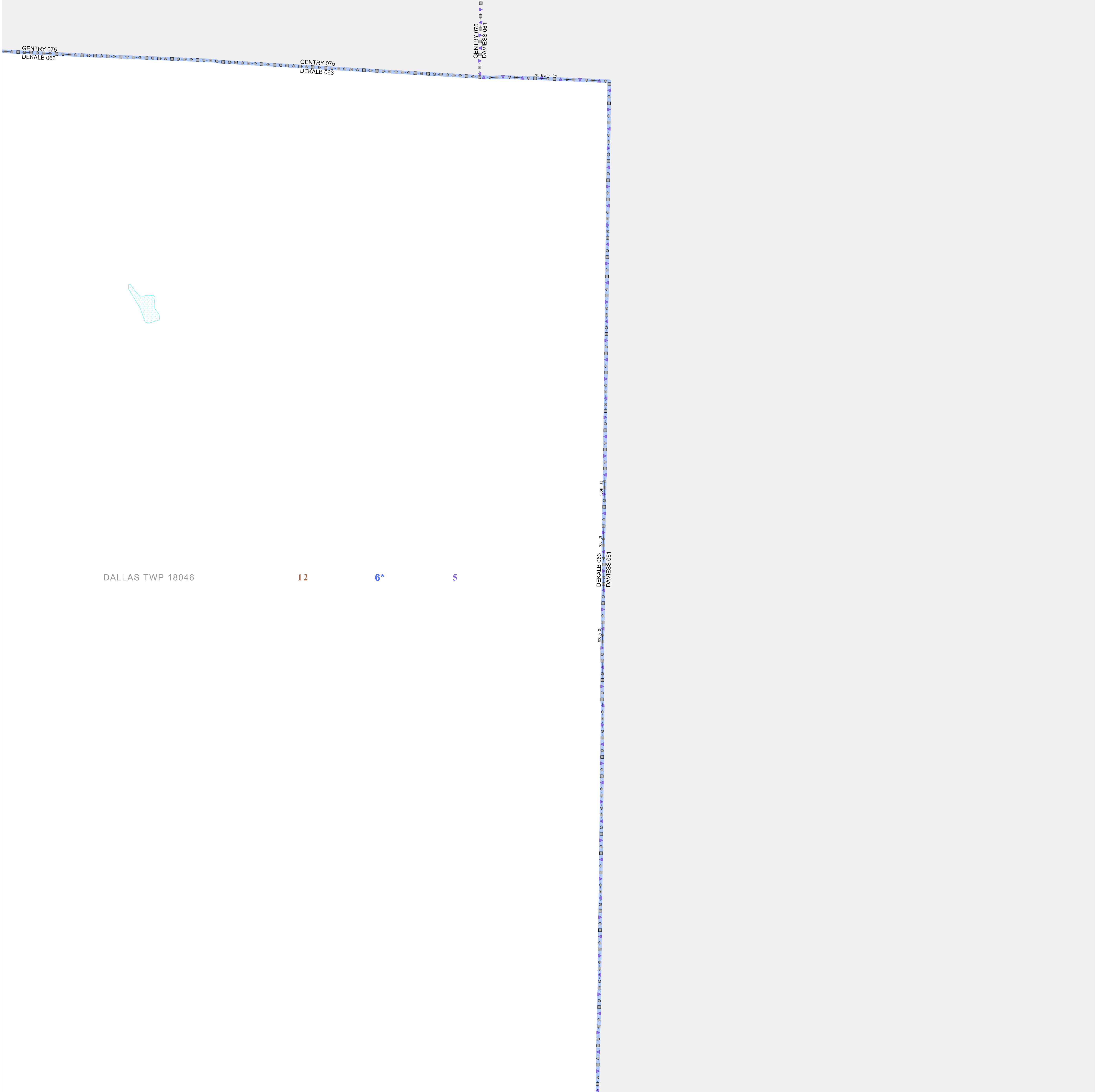


P.L. 94-171 VOTING DISTRICT/STATE LEGISLATIVE DISTRICT OUTLINE MAP (CENSUS 2000)

40 041915N
94 275232W

40 041915N
94 146049W



GEOGRAPHIC AREAS LEGEND

SYMBOL	NAME STYLE
*****	INTERNATIONAL
//////	STATE
□□□□	COUNTY
○ ○ ○ ○	MINOR CIVIL DIV ¹
■ ■ ■ ■	Incorporated Place ¹
■ ■ ■ ■	Census Designated Place ²
— — — —	Voting District
● ● ● ●	SLD-Senate
▲ ▲ ▲ ▲	SLD-House
□ □ □ □	Military
□ □ □ □	Inset
□ □ □ □	Out Area

Abbreviation Reference: AIR - American Indian Reservation; SDAISA - State Designated American Indian Statistical Area

¹ A " " following a place name indicates that the place is coterminous with a MCD. A " " indicates that the place is also a MCD. In both cases, the MCD name is shown only when it differs from the place name.

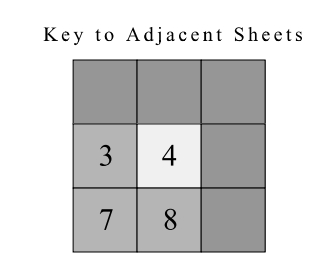
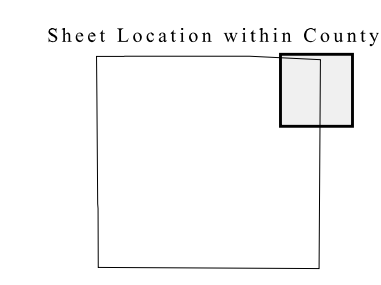
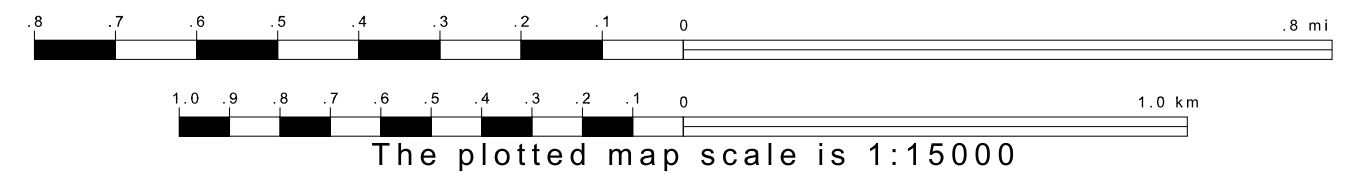
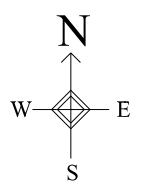
² A " " following a VTD code indicates an actual voting district. Its absence indicates that the VTD is a pseudo voting district or no information is available as to its status.

Voting Districts

Code	Name
6*	Dallas Voting District

39 042402N
94 275232W

39 042402N
94 146049W



ST: Missouri (29)
COU: DeKalb (063)
SHEET 4 OF 12 PARENT SHEETS

