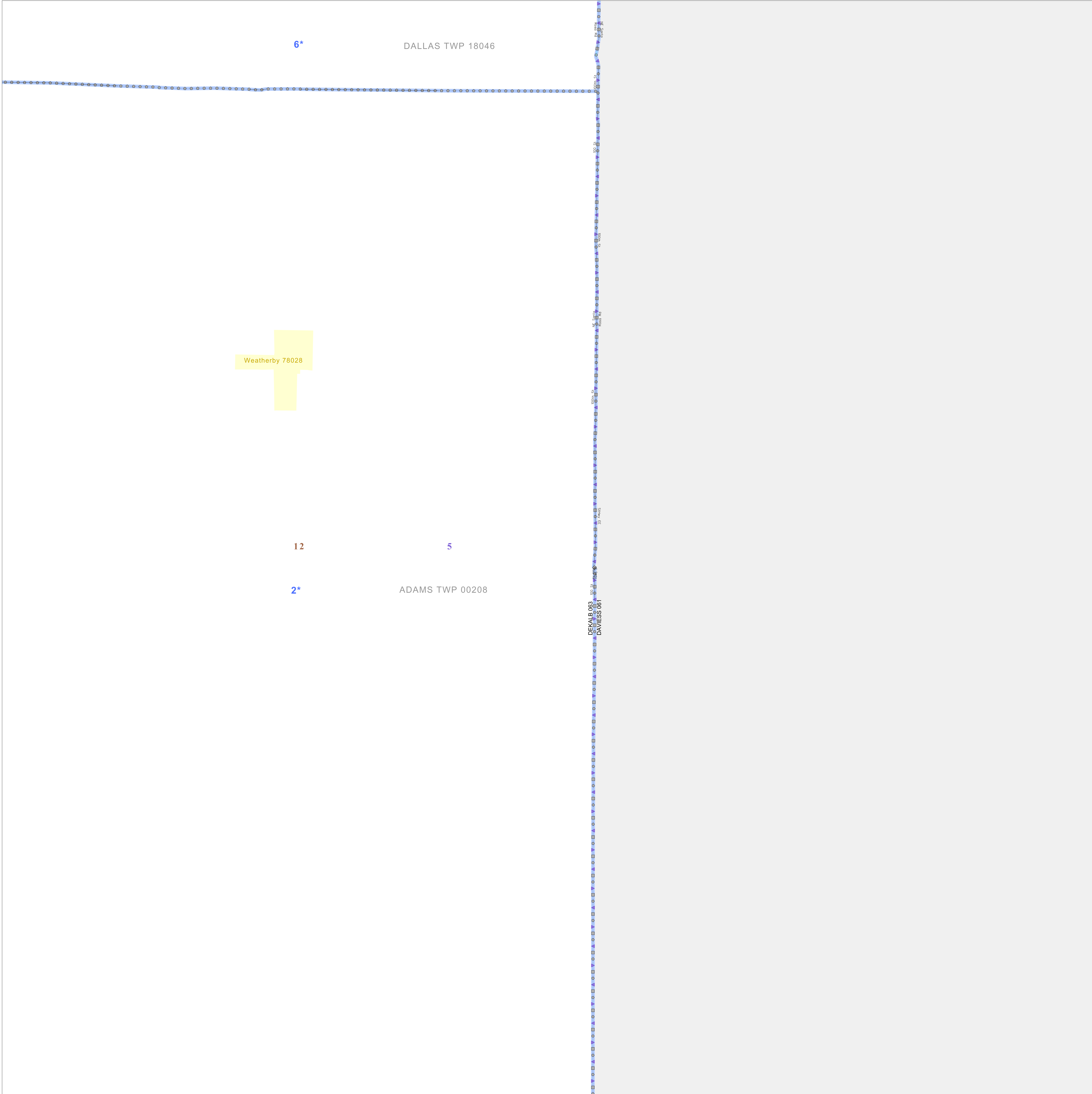


P.L. 94-171 VOTING DISTRICT/STATE LEGISLATIVE DISTRICT OUTLINE MAP (CENSUS 2000)

39 942402N
94 275232W

39 942402N
94 146049W



GEOGRAPHIC AREAS LEGEND

SYMBOL	NAME STYLE
*****	INTERNATIONAL
//////	STATE
□□□□□□	COUNTY
○●○●○●	MINOR CIVIL DIV ¹
■ ■ ■ ■ ■ ■	Incorporated Place ¹
■ ■ ■ ■ ■ ■	Census Designated Place ²
■ ■ ■ ■ ■ ■	Voting District
● ● ● ● ● ●	SLD-Senate
▲ ▲ ▲ ▲ ▲ ▲	SLD-House
□ □ □ □ □ □	Moibary
□ □ □ □ □ □	Inset
□ □ □ □ □ □	Out Area

Abbreviation Reference: AIR - American Indian Reservation; SDAISA - State Designated American Indian Statistical Area

¹ A "*" following a place name indicates that the place is coterminous with a MCD. A "-" indicates that the place is also a MCD. In both cases, the MCD name is shown only when it differs from the place name.

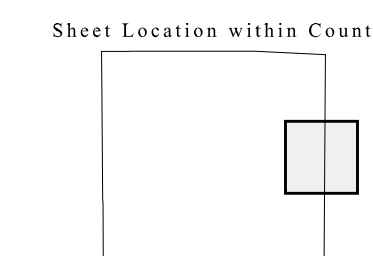
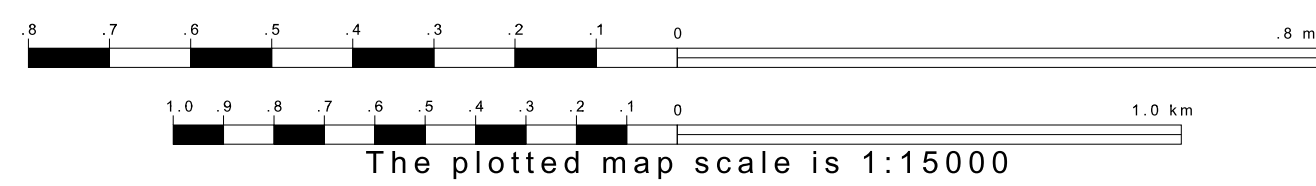
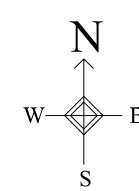
² A "*" following a VTD code indicates an actual voting district. Its absence indicates that the VTD is a pseudo voting district or no information is available as to its status.

Voting Districts

Code	Name
2*	Adams Voting District
6*	Dallas Voting District

39 842889N
94 275232W

39 942889N
94 146049W



Key to Adjacent Sheets

3	4
7	8
11	12

ST: Missouri (29)
COU: DeKalb (063)
SHEET 8 OF 12 PARENT SHEETS

