

P.L. 94-171 VOTING DISTRICT/STATE LEGISLATIVE DISTRICT OUTLINE MAP (CENSUS 2000)

39 842898N
94 533596W

39 842898N
94 404415W



GEOGRAPHIC AREAS LEGEND

SYMBOL	NAME STYLE
*****	INTERNATIONAL
///////	STATE
#####	COUNTY
○○○○○	MINOR CIVIL DIV ¹
■■■■■	Incorporated Place ¹
■■■■■	Census Designated Place ²
■■■■■	Voting District
●●●●●	SLD-Senate
▲▲▲▲▲	SLD-House

Military
 Inset
 Out Area

Abbreviation Reference: AIR - American Indian Reservation; SDAISA - State Designated American Indian Statistical Area

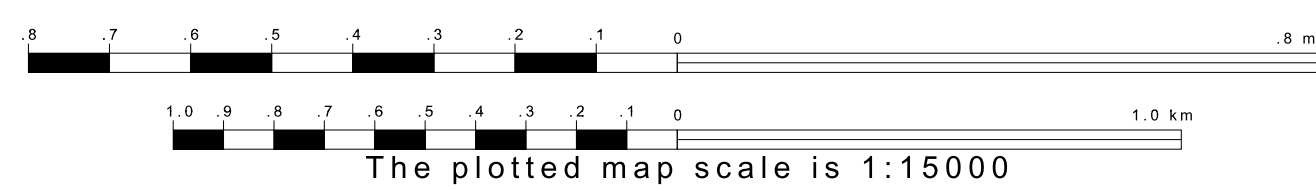
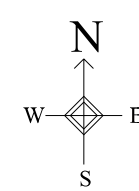
¹ A "*" following a place name indicates that the place is coterminous with a MCD. A "-" indicates that the place is also a false MCD. In both cases, the MCD name is shown only when it differs from the place name.
² A "*" following a VTD code indicates an actual voting district. Its absence indicates that the VTD is a pseudo voting district or no information is available as to its status.

Voting Districts

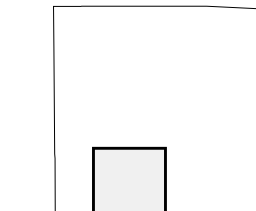
Code	Name
4*	CamdenWest Voting District
5*	Colfax Voting District
10*	Sherman Voting District
11*	WashingtonNorth Voting District
12*	WashingtonSouth Voting District

39 743376N
94 533596W

39 743376N
94 404415W



Sheet Location within County



Key to Adjacent Sheets

5	6	7
9	10	11

ST: Missouri (29)
 COU: DeKalb (063)
 SHEET 10 OF 12 PARENT SHEETS

