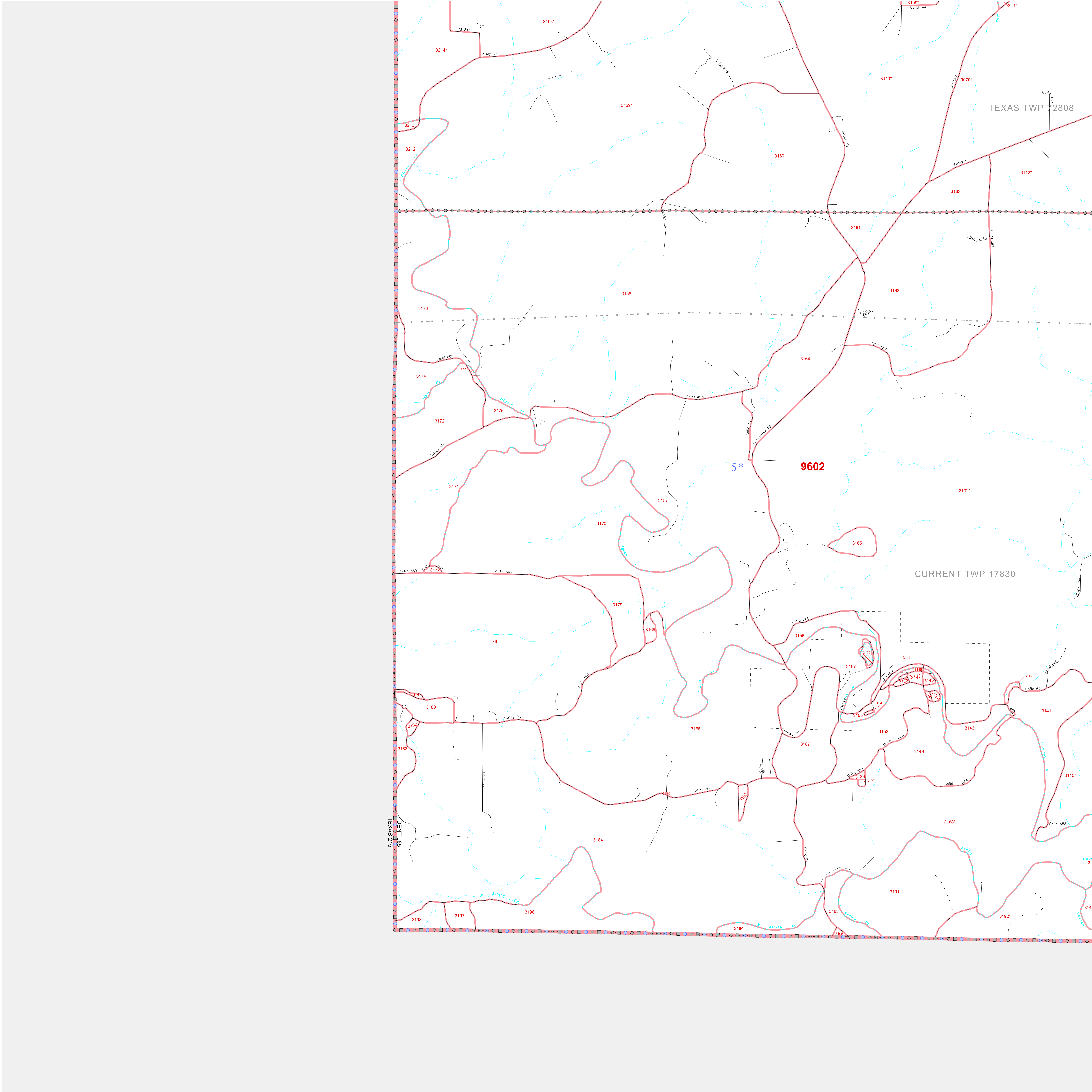


P. L. 94-171 COUNTY BLOCK MAP (CENSUS 2000)

37 536973N  
91 814884W

37 536973N  
91 814884W



**GEOGRAPHIC AREAS LEGEND**

SYMBOL	NAME STYLE
*****	INTERNATIONAL
//////	STATE
□□□□	COUNTY
□□□□	MINOR CIVIL DIV <sup>1</sup>
■ ■ ■ ■	Incorporated Place <sup>1</sup>
■ ■ ■ ■	Census Designated Place <sup>2</sup>
-----	Corporate Offset Boundary
.....	Voting District <sup>3</sup>
————	Census Tract
————	BLOCK <sup>3</sup>
-----	Military
-----	Inset
-----	Out Area

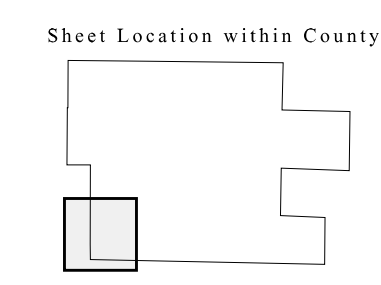
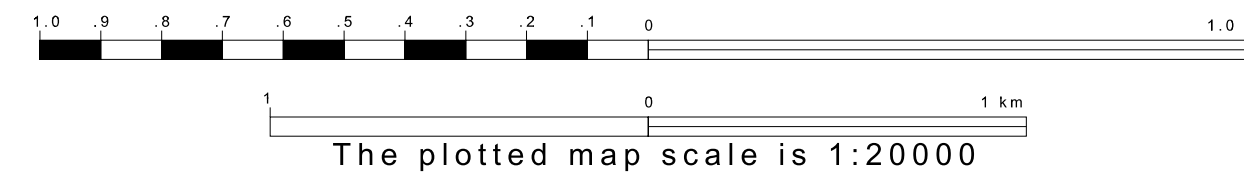
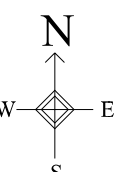
1 A "\*" following a place name indicates that the place is coterminous with a MCD. A "-" indicates that the place is also a false MCD. In both cases, the MCD name is shown only when it differs from the place name.

2 A "\*" following a VTD code indicates an actual voting district. Its absence indicates that the VTD is a pseudo voting district or no information is available as to its status.

3 A "\*" following a block number indicates that the block number is repeated elsewhere in the block.

37 404237N  
91 814884W

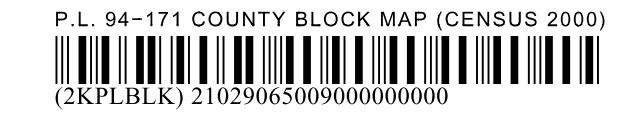
37 404237N  
91 814884W



Key to Adjacent Sheets

5	6
9	10

ST: Missouri (29)  
COU: Dent (065)  
SHEET 9 OF 12 PARENT SHEETS



All legal boundaries and names are as of January 1, 2000. The boundaries shown on this map are for Census Bureau statistical data collection and tabulation purposes only; their depiction and designation for statistical purposes does not constitute a determination of jurisdictional authority or rights of ownership or entitlement. U.S. DEPARTMENT OF COMMERCE Economics and Statistics Administration U.S. Census Bureau