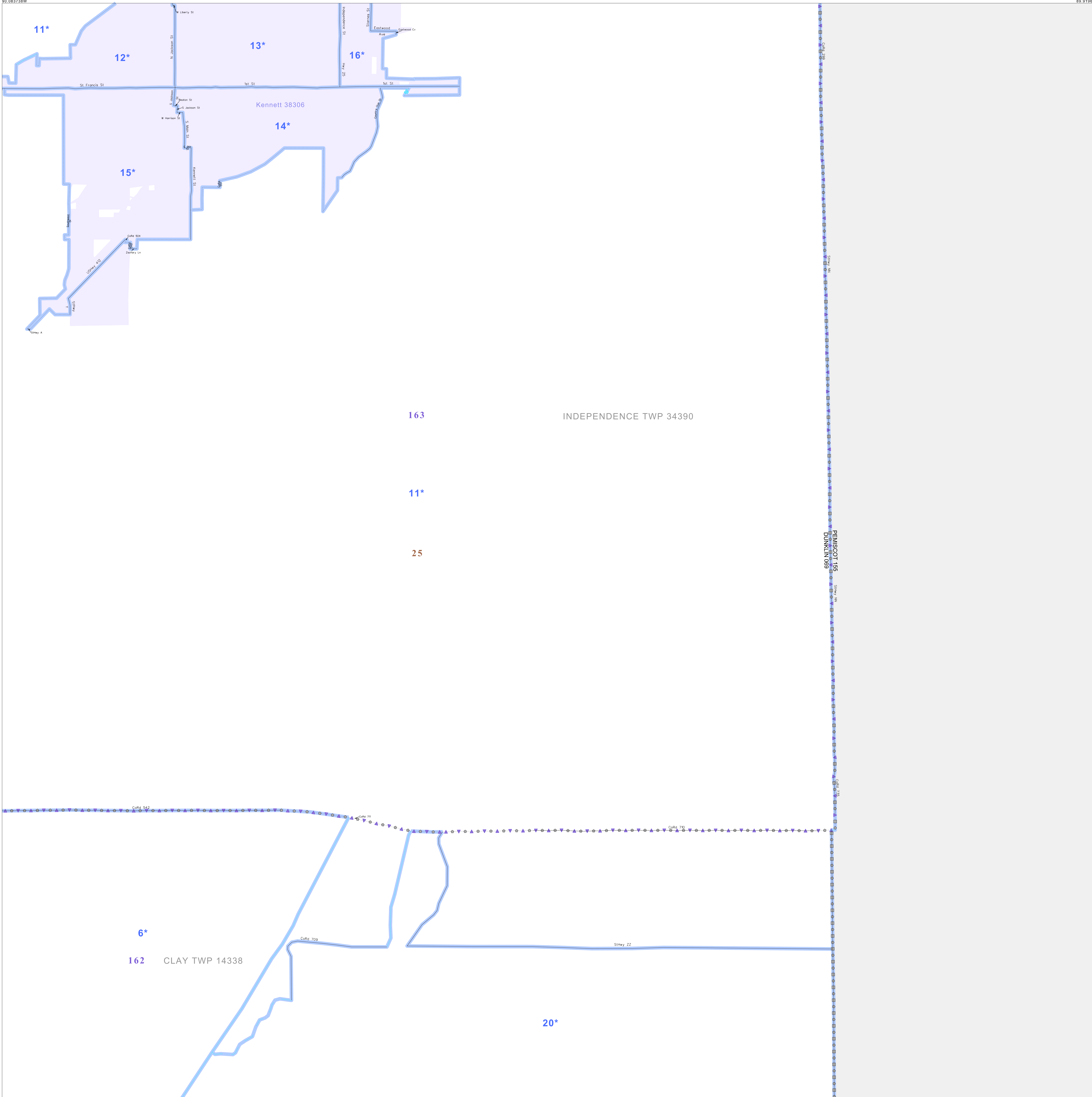


P.L. 94-171 VOTING DISTRICT/STATE LEGISLATIVE DISTRICT OUTLINE MAP (CENSUS 2000)

36 244636N  
90 083736W

36 244636N  
90 915099W



GEOGRAPHIC AREAS LEGEND

SYMBOL	NAME STYLE
*****	INTERNATIONAL
//////	STATE
□□□□□□	COUNTY
○ ○ ○ ○ ○	MINOR CIVIL DIV. <sup>1</sup>
■ ■ ■ ■ ■	Incorporated Place <sup>1</sup>
■ ■ ■ ■ ■	Census Designated Place <sup>2</sup>
—	Voting District
● ● ● ● ●	SLD-Senate
▲ ▲ ▲ ▲ ▲	SLD-House
□ □ □ □ □	Inset
□ □ □ □ □	Out Area

Abbreviation Reference: AIR - American Indian Reservation; SDAISA - State Designated American Indian Statistical Area

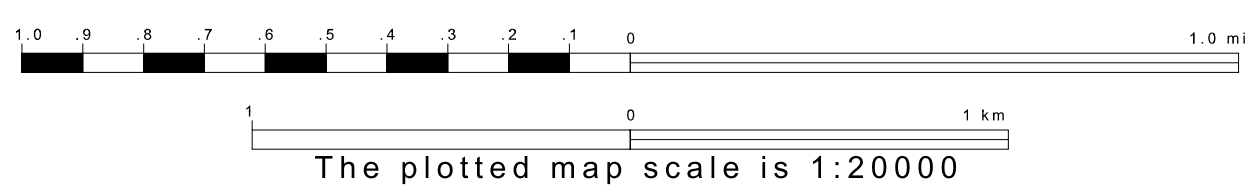
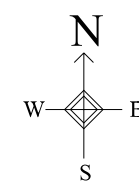
<sup>1</sup> A "\*" following a place name indicates that the place is coterminous with a MCD. A "-" indicates that the place is also a CDP. In both cases, the MCD name is shown only when it differs from the place name.  
<sup>2</sup> A "\*" following a VTD code indicates an actual voting district. Its absence indicates that the VTD is a pseudo voting district or no information is available as to its status.

Voting Districts

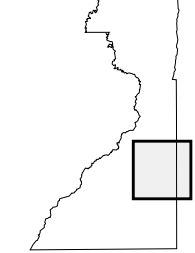
Code	Name
6*	Caruth Voting District
11*	Independence/Bural Voting District
12*	KennettWard1
13*	KennettWard2
14*	KennettWard3
15*	KennettWard4
16*	KennettWard5
20*	River Voting District

36 114170N  
90 083736W

36 114170N  
90 915099W



Sheet Location within County



Key to Adjacent Sheets

5	6
8	9
11	12

ST: Missouri (29)  
 COU: Dunklin (069)  
 SHEET 9 OF 12 PARENT SHEETS

