

P.L. 94-171 VOTING DISTRICT/STATE LEGISLATIVE DISTRICT OUTLINE MAP (CENSUS 2000)

36 114170N  
90 411817W

36 114170N  
90 247777W

GEOGRAPHIC AREAS LEGEND

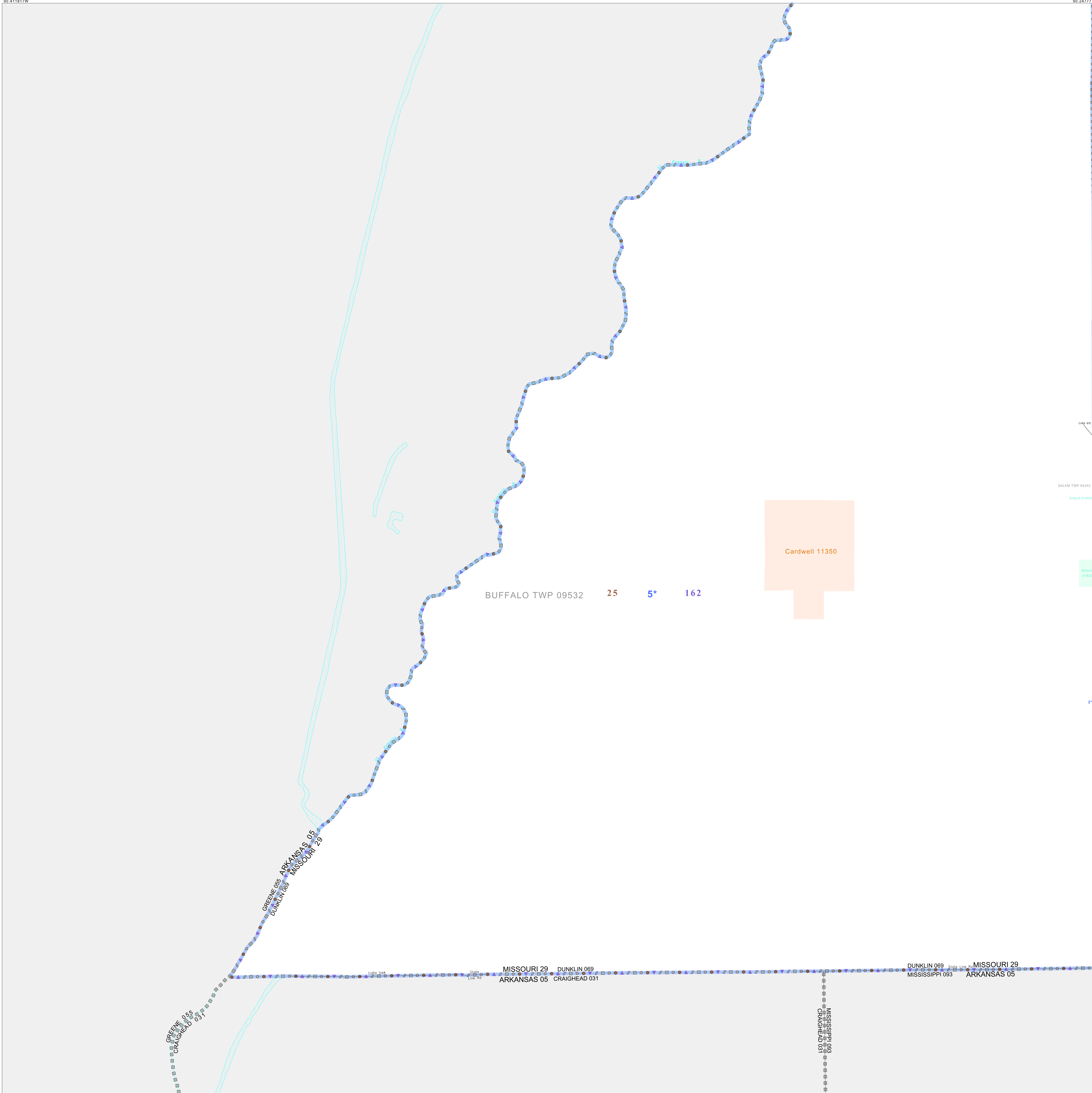
SYMBOL	NAME STYLE
*****	INTERNATIONAL
//////	STATE
□□□□	COUNTY
○ ○ ○ ○	MINOR CIVIL DIV <sup>1</sup>
■ ■ ■ ■	Incorporated Place <sup>1</sup>
■ ■ ■ ■	Census Designated Place <sup>1</sup>
—	Voting District <sup>2</sup>
● ● ● ●	SLD-Senate
▲ ▲ ▲ ▲	SLD-House
□ □ □ □	Minority
□ □ □ □	Inset
□ □ □ □	Out Area

Abbreviation Reference: AIR - American Indian Reservation; SDAISA - State Designated American Indian Statistical Area

<sup>1</sup> A "\*" following a place name indicates that the place is coterminous with a MCD. A "-" indicates that the place is also a false MCD. In both cases, the MCD name is shown only when it differs from the place name.  
<sup>2</sup> A "\*" following a VTD code indicates an actual voting district. Its absence indicates that the VTD is a pseudo voting district or no information is available as to its status.

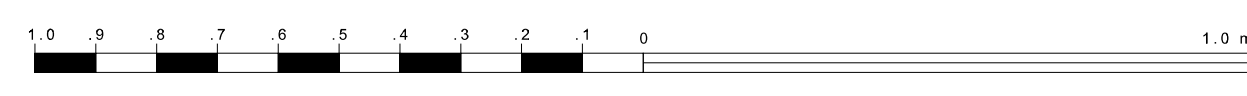
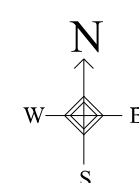
Voting Districts

Code	Name
2*	Arbysd Voting District
5*	Cardwell Voting District
21*	South Voting District



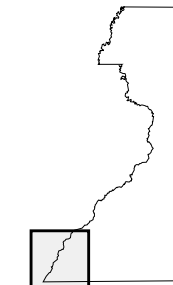
35 981404N  
90 411817W

35 981404N  
90 247777W



The plotted map scale is 1:20000

Sheet Location within County



Key to Adjacent Sheets

7	8
10	11

ST: Missouri (29)  
 COU: Dunklin (069)  
 SHEET 10 OF 12 PARENT SHEETS



P.L. 94-171 VTD/SLD OUTLINE MAP (Census 2000)  
 (CKPLVTD) 2132908901000000000