

P.L. 94-171 VOTING DISTRICT/STATE LEGISLATIVE DISTRICT OUTLINE MAP (CENSUS 2000)

38 323555N
91 358278W

38 323555N
91 219502W

GEOGRAPHIC AREAS LEGEND

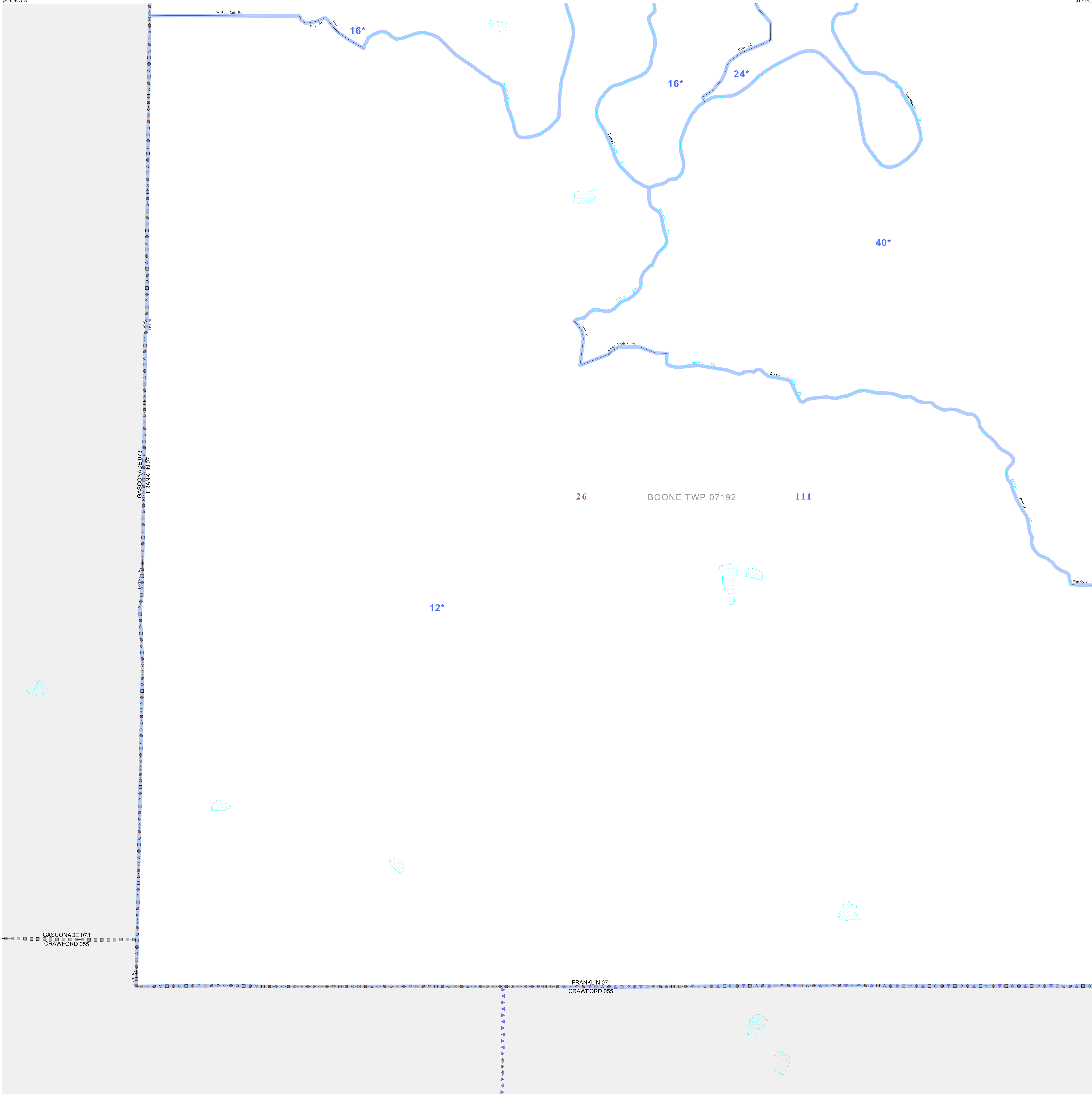
SYMBOL	NAME STYLE
*****	INTERNATIONAL
//////	STATE
□□□□	COUNTY
○●○●○●	MINOR CIVIL DIV. ¹
■	Incorporated Place ¹
■	Census Designated Place ²
—	Voting District
●●●●●	SLD-Senate
▲▲▲▲▲	SLD-House
□	Minority
□	Inset
□	Out Area

Abbreviation Reference: AIR - American Indian Reservation; SDAISA - State Designated American Indian Statistical Area

¹ A "*" following a place name indicates that the place is coterminous with a MCD. A "-" indicates that the place is also a CSD. In both cases, the MCD name is shown only when it differs from the place name.
² A "*" following a VTD code indicates an actual voting district. Its absence indicates that the VTD is a pseudo voting district or no information is available as to its status.

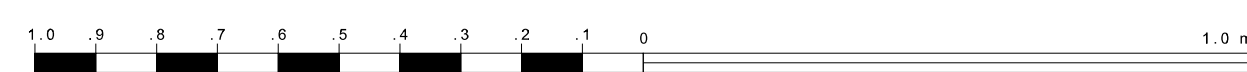
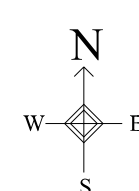
Voting Districts

Code	Name
12*	Elmest-Japan Voting District
16*	Gerald-Stafftown Voting District
24*	Laurie-Stafftown Voting District
40*	SpringBluff Voting District



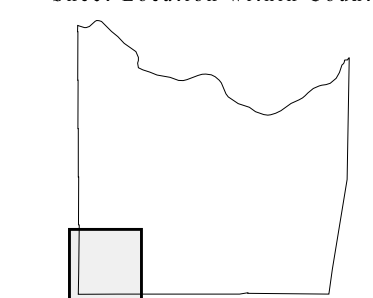
38 150758N
91 358278W

38 150758N
91 219502W

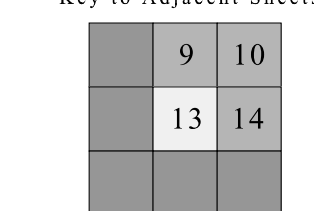


The plotted map scale is 1:20000

Sheet Location within County



Key to Adjacent Sheets



ST: Missouri (29)
 COU: Franklin (071)
 SHEET 13 OF 16 PARENT SHEETS

