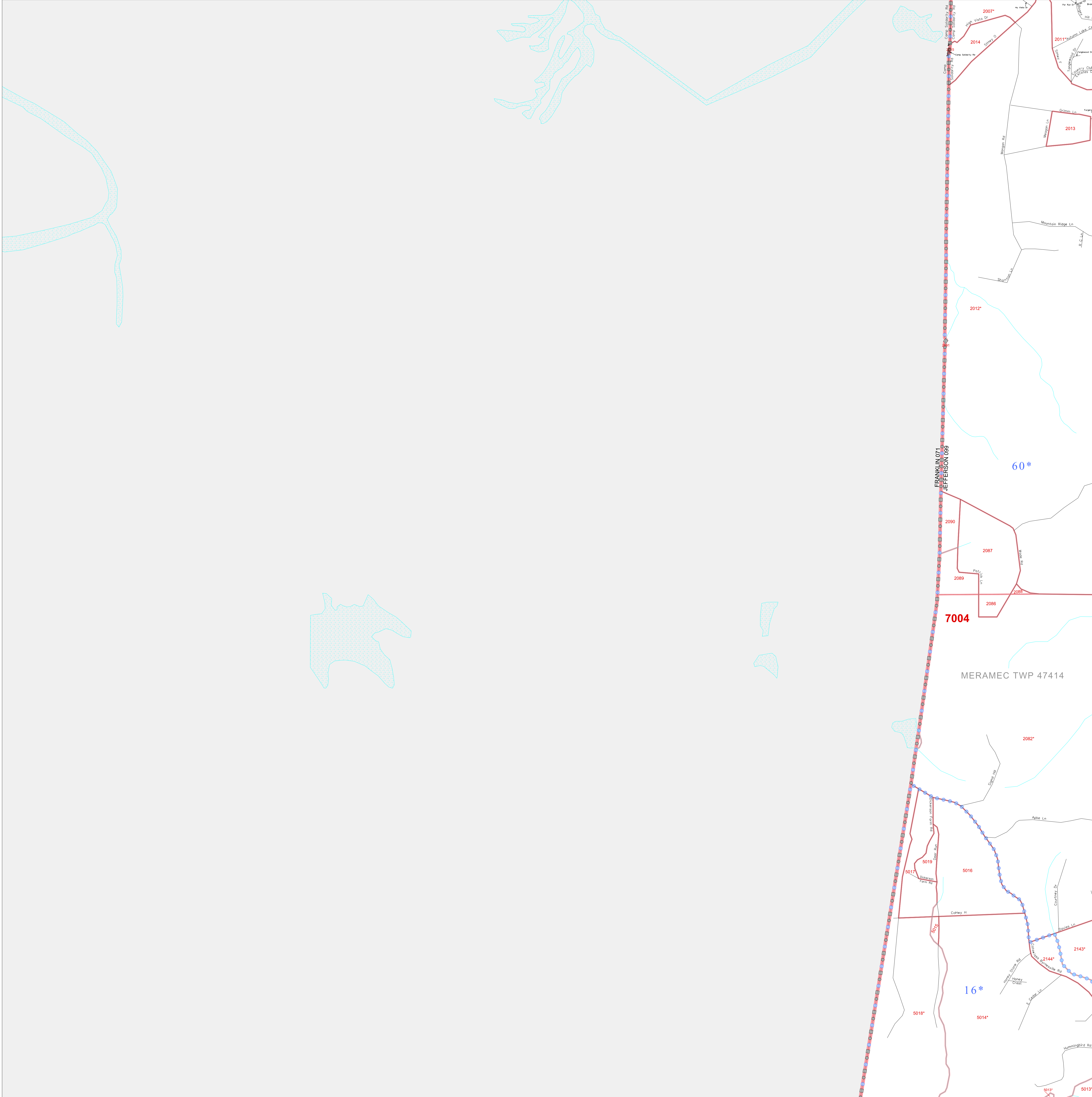


P.L. 94-171 COUNTY BLOCK MAP (CENSUS 2000)

38 451810N  
90.809406W

38 451810N  
90.725254W



**GEOGRAPHIC AREAS LEGEND**

| SYMBOL    | NAME STYLE                           |
|-----------|--------------------------------------|
| ☆ ☆ ☆ ☆ ☆ | INTERNATIONAL                        |
| ▬ ▬ ▬ ▬ ▬ | STATE                                |
| ▬ ▬ ▬ ▬ ▬ | COUNTY                               |
| ▬ ▬ ▬ ▬ ▬ | MINOR CIVIL DIV. <sup>1</sup>        |
| ▬ ▬ ▬ ▬ ▬ | Incorporated Place <sup>1</sup>      |
| ▬ ▬ ▬ ▬ ▬ | Census Designated Place <sup>1</sup> |
| ▬ ▬ ▬ ▬ ▬ | Corporate Offset Boundary            |
| ● ● ● ● ● | Voting District <sup>2</sup>         |
| ▬ ▬ ▬ ▬ ▬ | Census Tract                         |
| ▬ ▬ ▬ ▬ ▬ | BLOCK <sup>3</sup>                   |
| ▬ ▬ ▬ ▬ ▬ | Military                             |
| Inset     | Out Area                             |

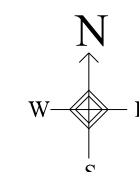
1 A "\*" following a place name indicates that the place is coterminous with a MCD. "A\*" indicates that the place is also a false MCD. In both cases, the MCD name is shown only when it differs from the place name.

2 A "\*" following a VTD code indicates an actual voting district. Its absence indicates that the VTD is a pseudo voting district or no information is available as to its status.

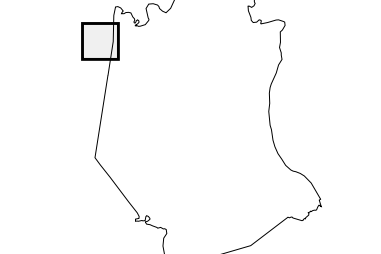
3 A "\*" following a block number indicates that the block number is repeated elsewhere in the block.

38 385440N  
90.809406W

38 385440N  
90.725254W



Sheet Location within County



Key to Adjacent Sheets

|    |    |
|----|----|
| 1  | 2  |
| 7  | 8  |
| 13 | 14 |

ST: Missouri (29)  
COU: Jefferson (099)  
SHEET 7 OF 46 PARENT SHEETS

All legal boundaries and names are as of January 1, 2000. The boundaries shown on this map are for Census Bureau statistical data collection and tabulation purposes only; their depiction and designation for statistical purposes does not constitute a determination of jurisdictional authority or rights of ownership or entitlement. U.S. DEPARTMENT OF COMMERCE Economics and Statistics Administration U.S. Census Bureau

