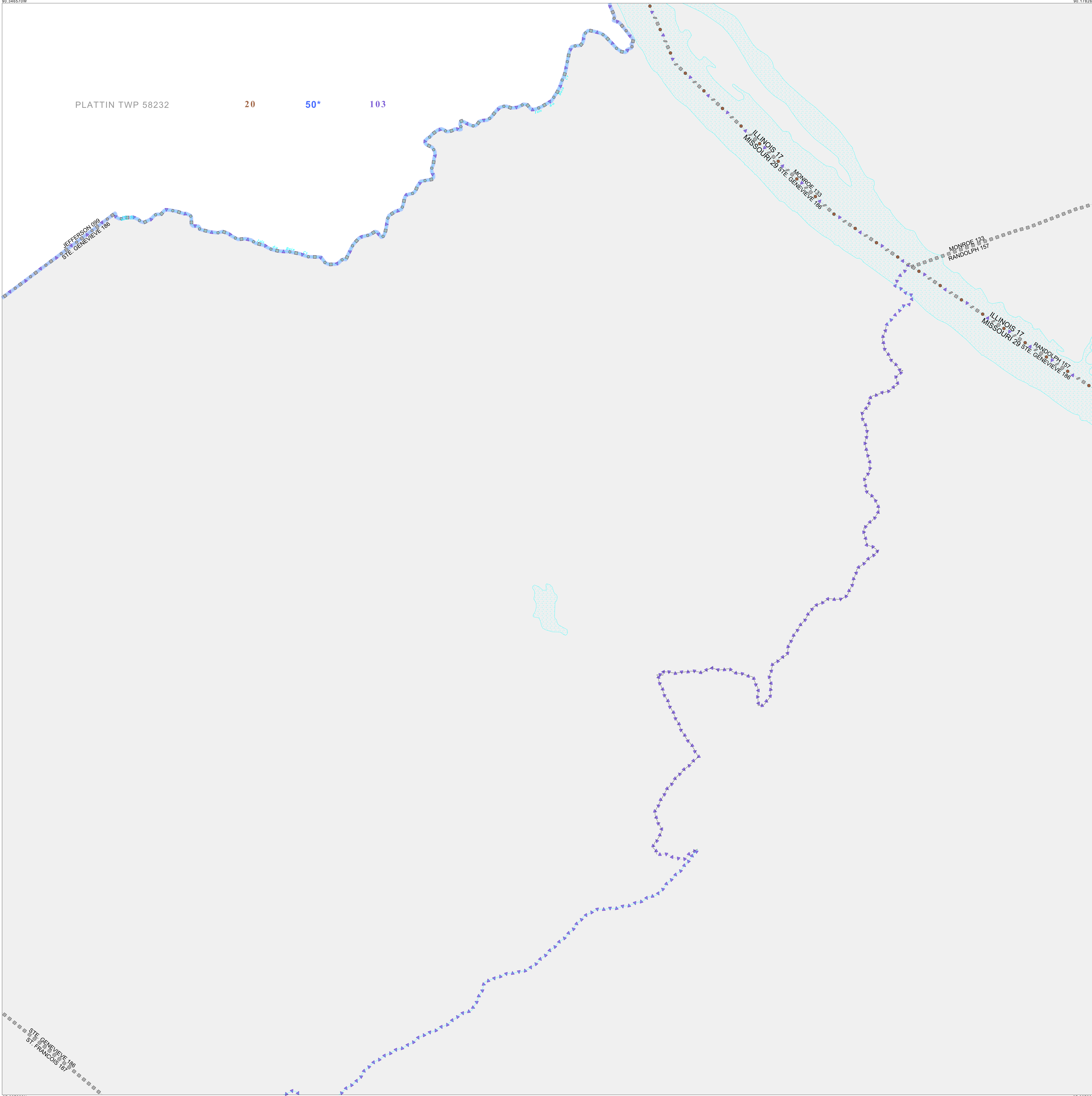


P.L. 94-171 VOTING DISTRICT/STATE LEGISLATIVE DISTRICT OUTLINE MAP (CENSUS 2000)

38 120065N
90 346570W

38 120065N
90 176267W



GEOGRAPHIC AREAS LEGEND

SYMBOL	NAME STYLE
*****	INTERNATIONAL
//////	STATE
□□□□	COUNTY
□□□□	MINOR CIVIL DIV. ¹
■ ■ ■ ■	Incorporated Place ¹
■ ■ ■ ■	Census Designated Place ¹
■ ■ ■ ■	Voting District ²
● ● ● ●	SLD-Senate
▲ ▲ ▲ ▲	SLD-House
□ □ □ □	Minority
□ □ □ □	Inset
□ □ □ □	Out Area

Abbreviation Reference: AIR - American Indian Reservation; SDAISA - State Designated American Indian Statistical Area

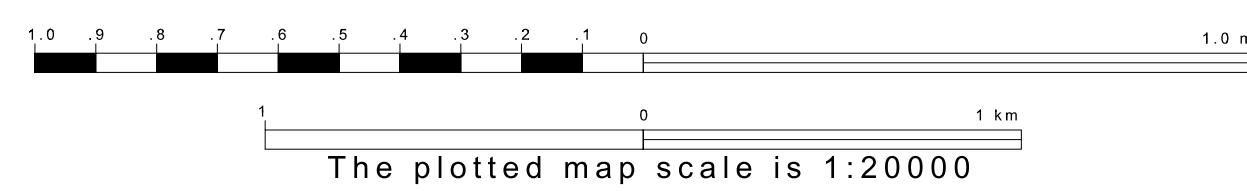
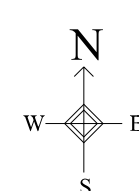
¹ A "*" following a place name indicates that the place is coterminous with a MCD. A "-" indicates that the place is also a false MCD. In both cases, the MCD name is shown only when it differs from the place name.
² A "*" following a VTD code indicates an actual voting district. Its absence indicates that the VTD is a pseudo voting district or no information is available as to its status.

Voting Districts

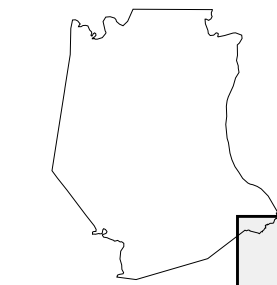
Code	Name
50*	JeffersonR7-103/Rush-Tower Voting District

37 987283N
90 346570W

37 987283N
90 176267W



Sheet Location within County



Key to Adjacent Sheets

10	11
14	15

ST: Missouri (29)
 COU: Jefferson (099)
 SHEET 15 OF 15 PARENT SHEETS

