

P.L. 94-171 VOTING DISTRICT/STATE LEGISLATIVE DISTRICT OUTLINE MAP (CENSUS 2000)

40 126768N
92 383640W

40 126768N
92 147993W



GEOGRAPHIC AREAS LEGEND

SYMBOL	NAME STYLE
*****	INTERNATIONAL
//////	STATE
□□□□□□	COUNTY
○●○●○●	MINOR CIVIL DIV. ¹
■ ■ ■ ■ ■ ■	Incorporated Place ¹
■ ■ ■ ■ ■ ■	Census Designated Place ¹
— — — — —	Voting District ²
●●●●●●	SLD-Senate
▲▲▲▲▲▲	SLD-House

Military
 Inset
 Out Area

Abbreviation Reference: AIR - American Indian Reservation; SDAISA - State Designated American Indian Statistical Area

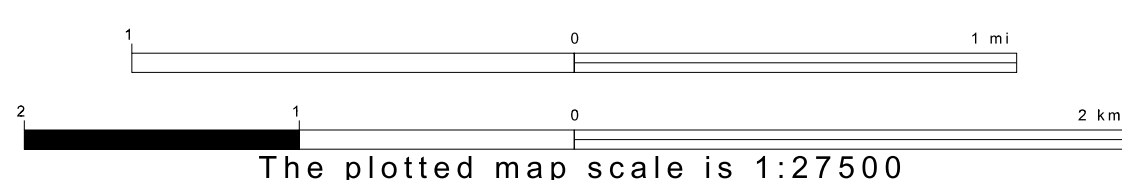
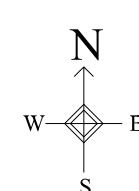
¹ A "*" following a place name indicates that the place is coterminous with a MCD. A "-" indicates that the place is also a false MCD. In both cases, the MCD name is shown only when it differs from the place name.
² A "*" following a VTD code indicates an actual voting district. Its absence indicates that the VTD is a pseudo voting district or no information is available as to its status.

Voting Districts

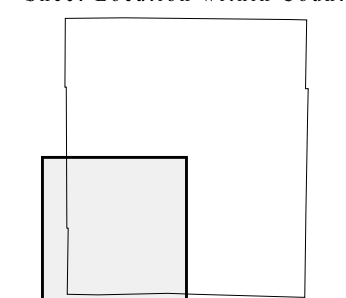
Code	Name
3*	Edina Voting District
4*	Harland Voting District
5*	Novelty Voting District
7*	Novelty Voting District

39 844335N
92 383640W

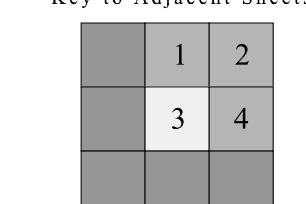
39 844335N
92 147993W



Sheet Location within County



Key to Adjacent Sheets



ST: Missouri (29)
 COU: Knox (103)
 SHEET 3 OF 4 PARENT SHEETS

