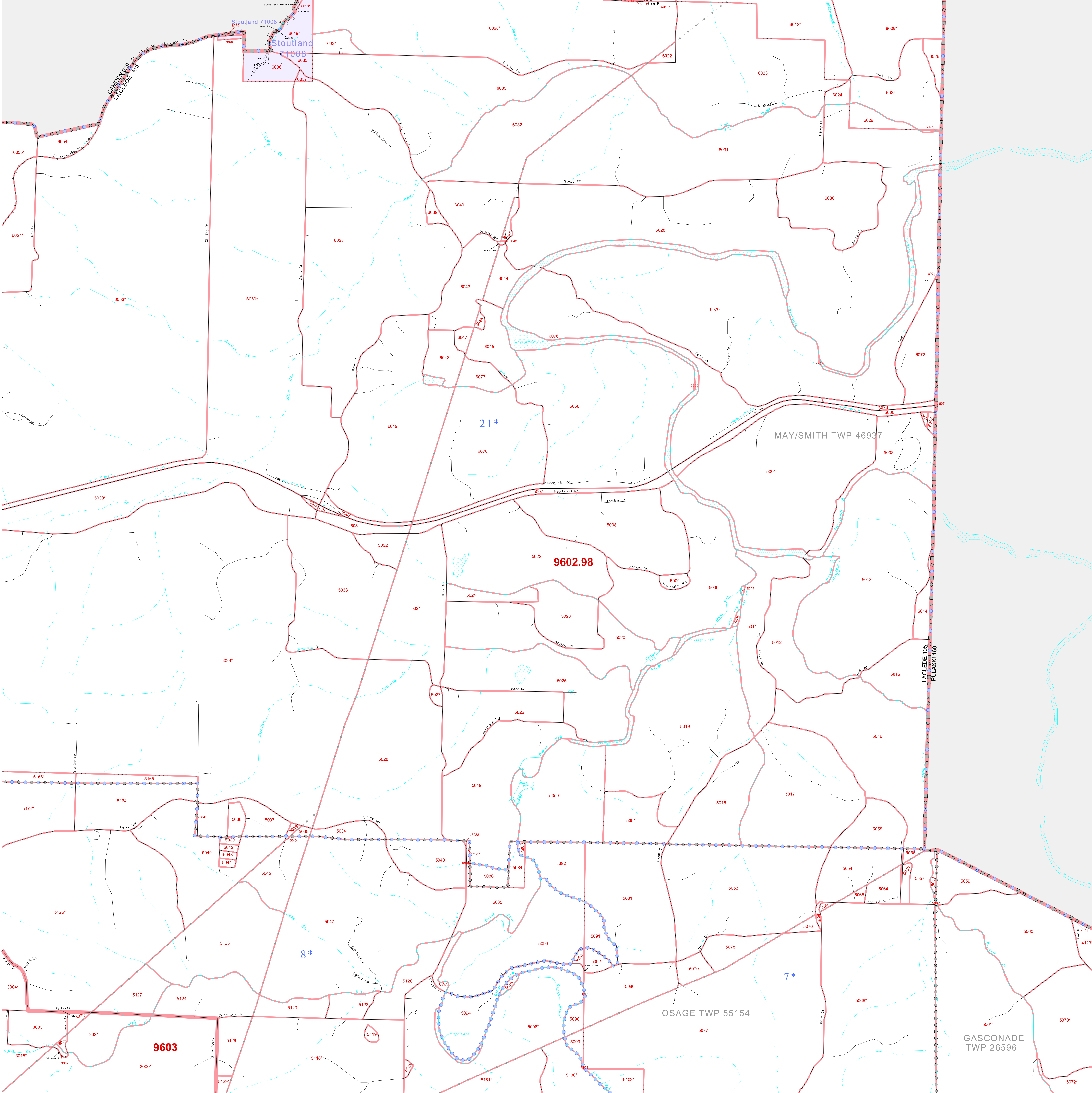


P. L. 94-171 COUNTY BLOCK MAP (CENSUS 2000)

37 817076N
92 554390W

37 817076N
92 554390W



GEOGRAPHIC AREAS LEGEND

- | SYMBOL | NAME | STYLE |
|---------|--------------------------------------|-------|
| ***** | INTERNATIONAL | |
| //// | STATE | |
| □□□□ | COUNTY | |
| □□□□ | MINOR CIVIL DIV. | |
| ■ ■ ■ ■ | Incorporated Place ¹ | |
| ■ ■ ■ ■ | Census Designated Place ² | |
| | Corporate Offset Boundary | |
| ●●●● | Voting District ³ | |
| ——— | Census Tract | |
| ——— | BLOCK ³ | |

1 A "*" following a place name indicates that the place is coterminous with a MCD. A "-" indicates that the place is also a false MCD. In both cases, the MCD name is shown only when it differs from the place name.

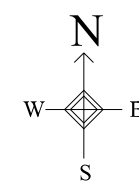
2 A "*" following a VTD code indicates an actual voting district. Its absence indicates that the VTD is a pseudo voting district or no information is available as to its status.

3 A "*" following a block number indicates that the block number is repeated elsewhere in the block.

Military Inset Out Area

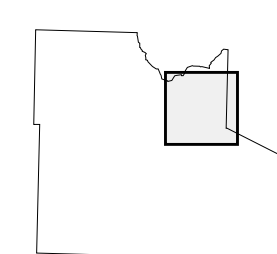
37 884341N
92 554390W

37 884341N
92 554390W



The plotted map scale is 1:20000

Sheet Location within County



Key to Adjacent Sheets

2	3
5	6
9	10

ST: Missouri (29)
 COU: Laclade (105)
 SHEET 6 OF 15 PARENT SHEETS

