

P. L. 94-171 COUNTY BLOCK MAP (CENSUS 2000)

39 058262N
94 624704W

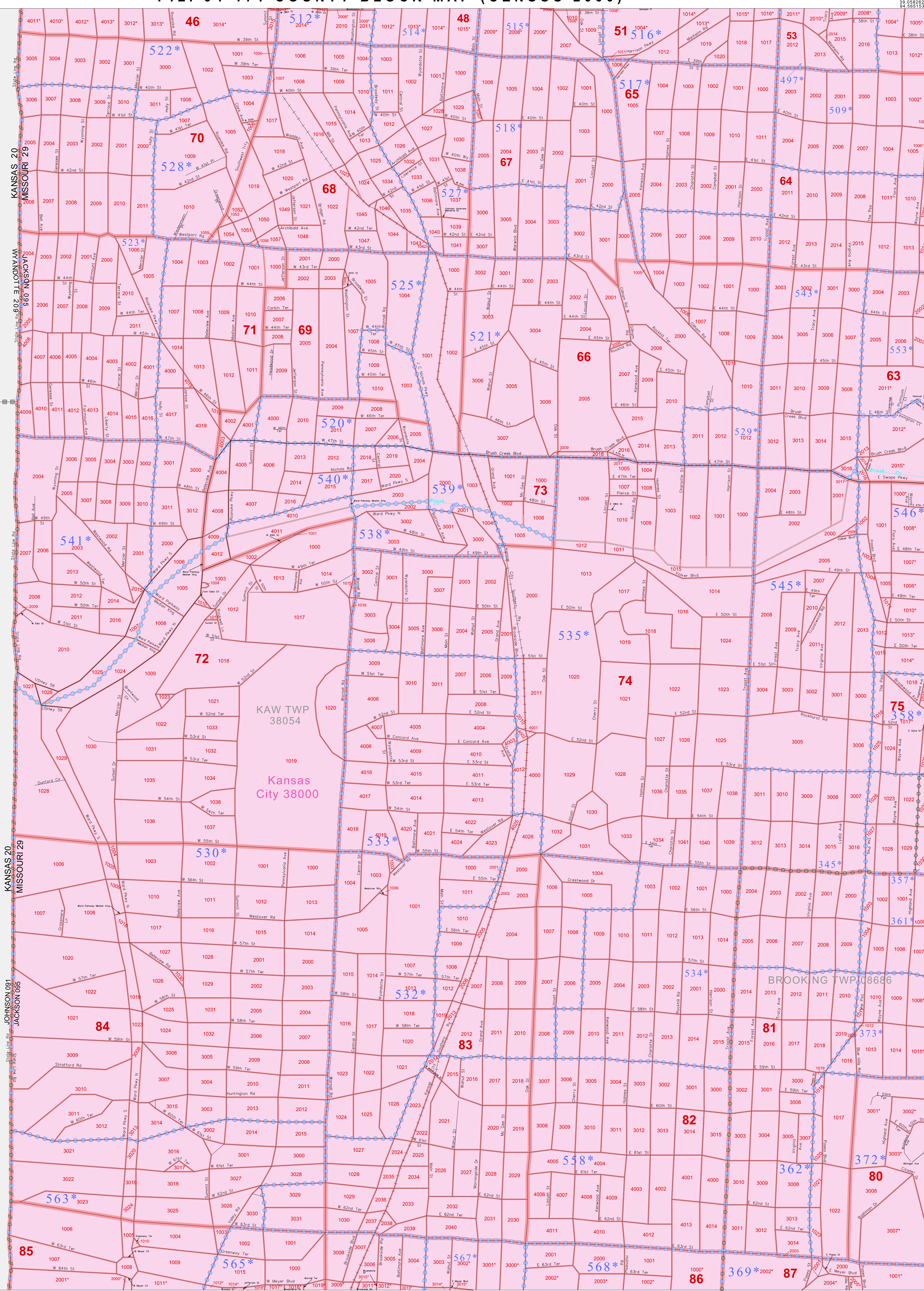
39 058927N
94 581533W

GEOGRAPHIC AREAS LEGEND

SYMBOL	NAME STYLE
*****	INTERNATIONAL
//////	STATE
■■■■■	COUNTY
●●●●●	MINOR CIVIL DIV.
Yellow box	Incorporated Place ¹
Pink box	Census Designated Place ²
Dashed line	Corporate Offset Boundary
Blue dashed line	Voting District ³
Red dashed line	Census Tract
Blue dashed line	BLOCK ³
Blue dashed line	Military
Inset box	Inset
Out Area box	Out Area

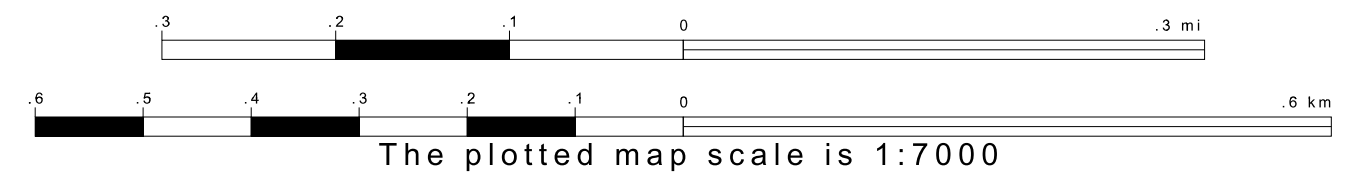
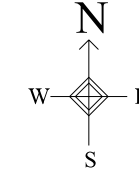
1 A "*" following a place name indicates that the place is coextensive with a MCD. A "*" indicates that the place is also a false MCD. In both cases, the MCD name is shown only when it differs from the place name.
 2 A "*" following a VTD code indicates an actual voting district. Its absence indicates that the VTD is a pseudo voting district or no information is available as to its status.
 3 A "*" following a block number indicates that the block number is repeated elsewhere in the block.

County Line for WYANDOTTE 209
JOHNSON 091

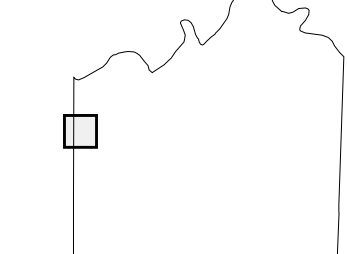


39 011815N
94 624704W

39 011815N
94 581533W



Sheet Location within County



Key to Adjacent Sheets

19	20
28	29
37	38

ST: Missouri (29)
 COU: Jackson (095)
 SHEET 28 OF 72 PARENT SHEETS



All legal boundaries and names are as of January 1, 2000. The boundaries shown on this map are for Census Bureau statistical data collection and tabulation purposes only; their depiction and designation for statistical purposes does not constitute a determination of jurisdictional authority or rights of ownership or entitlement. U.S. DEPARTMENT OF COMMERCE Economics and Statistics Administration U.S. Census Bureau