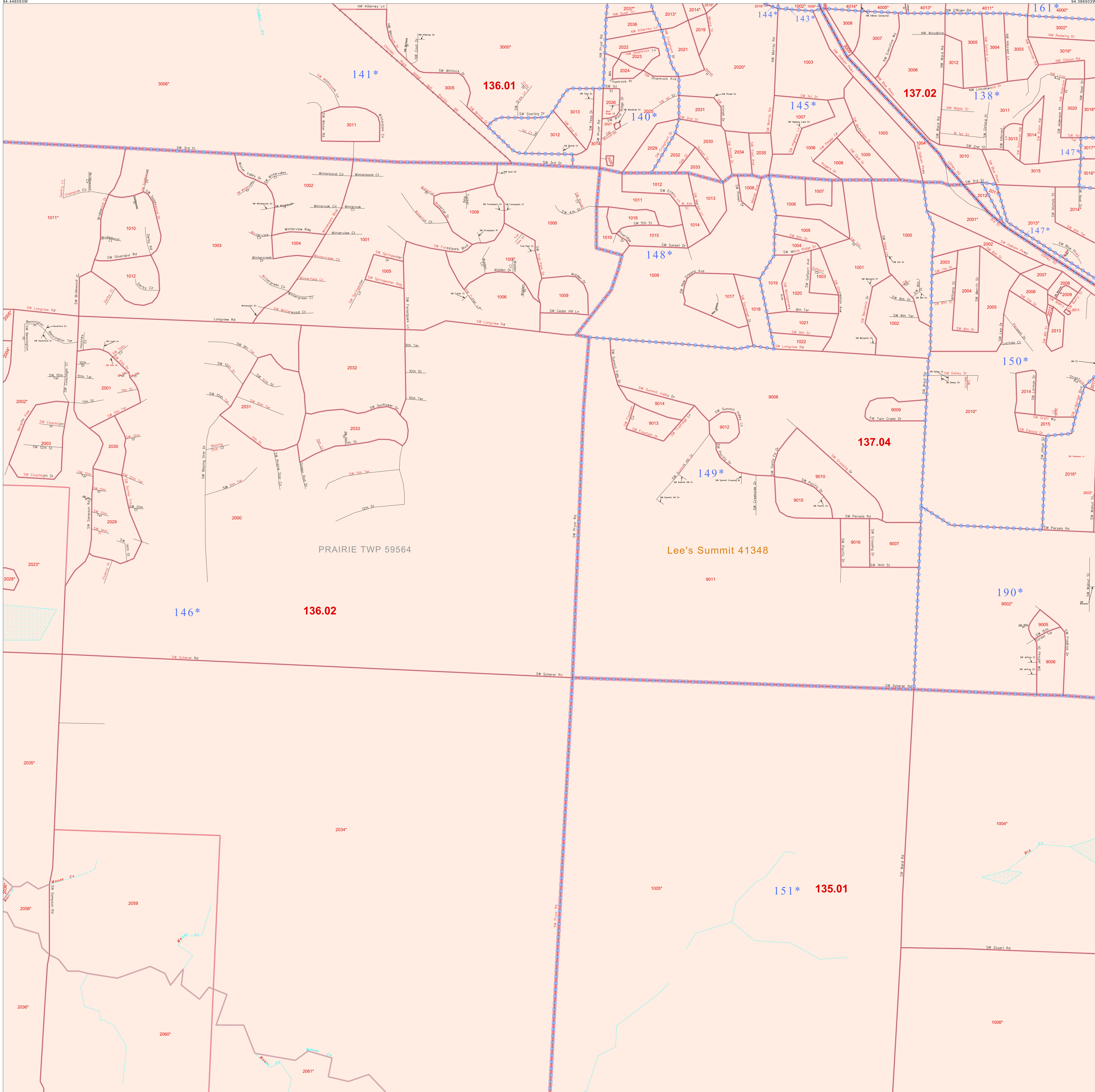


P. L. 94-171 COUNTY BLOCK MAP (CENSUS 2000)

38 918922N  
94 446053W

38 918922N  
94 386503W



GEOGRAPHIC AREAS LEGEND

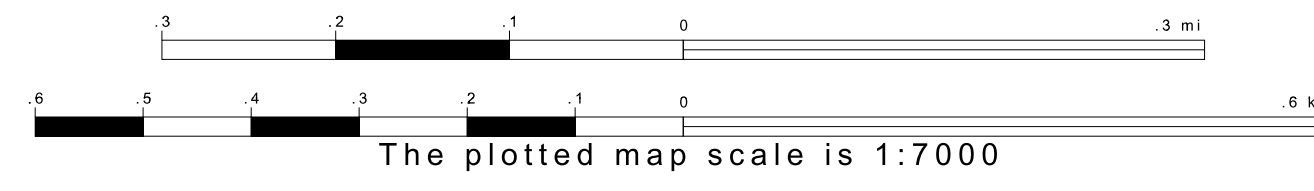
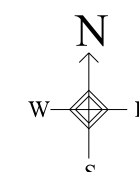
SYMBOL	NAME	STYLE
☆☆☆☆☆	INTERNATIONAL	
///////	STATE	
□□□□□	COUNTY	
□□□□□	MINOR CIVIL DIV.	
■	Incorporated Place <sup>1</sup>	
■	Census Designated Place <sup>2</sup>	
.....	Corporate Offset Boundary	
.....	Voting District <sup>3</sup>	
.....	Census Tract	
.....	BLOCK <sup>3</sup>	
.....	Military	

1 A "\*" following a place name indicates that the place is coterminous with a MCD. A "-" indicates that the place is also a false MCD. In both cases, the MCD name is shown only when it differs from the place name.  
 2 A "\*" following a VTD code indicates an actual voting district. Its absence indicates that the VTD is a pseudo voting district or no information is available as to its status.  
 3 A "\*" following a block number indicates that the block number is repeated elsewhere in the block.

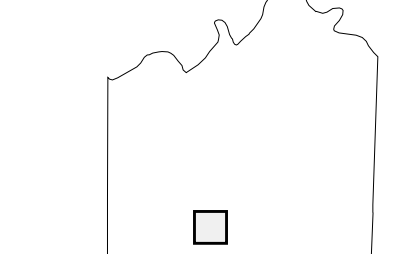
Inset Out Area

38 872476N  
94 446053W

38 872476N  
94 386503W



Sheet Location within County



Key to Adjacent Sheets

48	49	50
57	58	59
66	67	68

ST: Missouri (29)  
 COU: Jackson (095)  
 SHEET 58 OF 72 PARENT SHEETS



All legal boundaries and names are as of January 1, 2000. The boundaries shown on this map are for Census Bureau statistical data collection and tabulation purposes only; their depiction and designation for statistical purposes does not constitute a determination of jurisdictional authority or rights of ownership or entitlement.