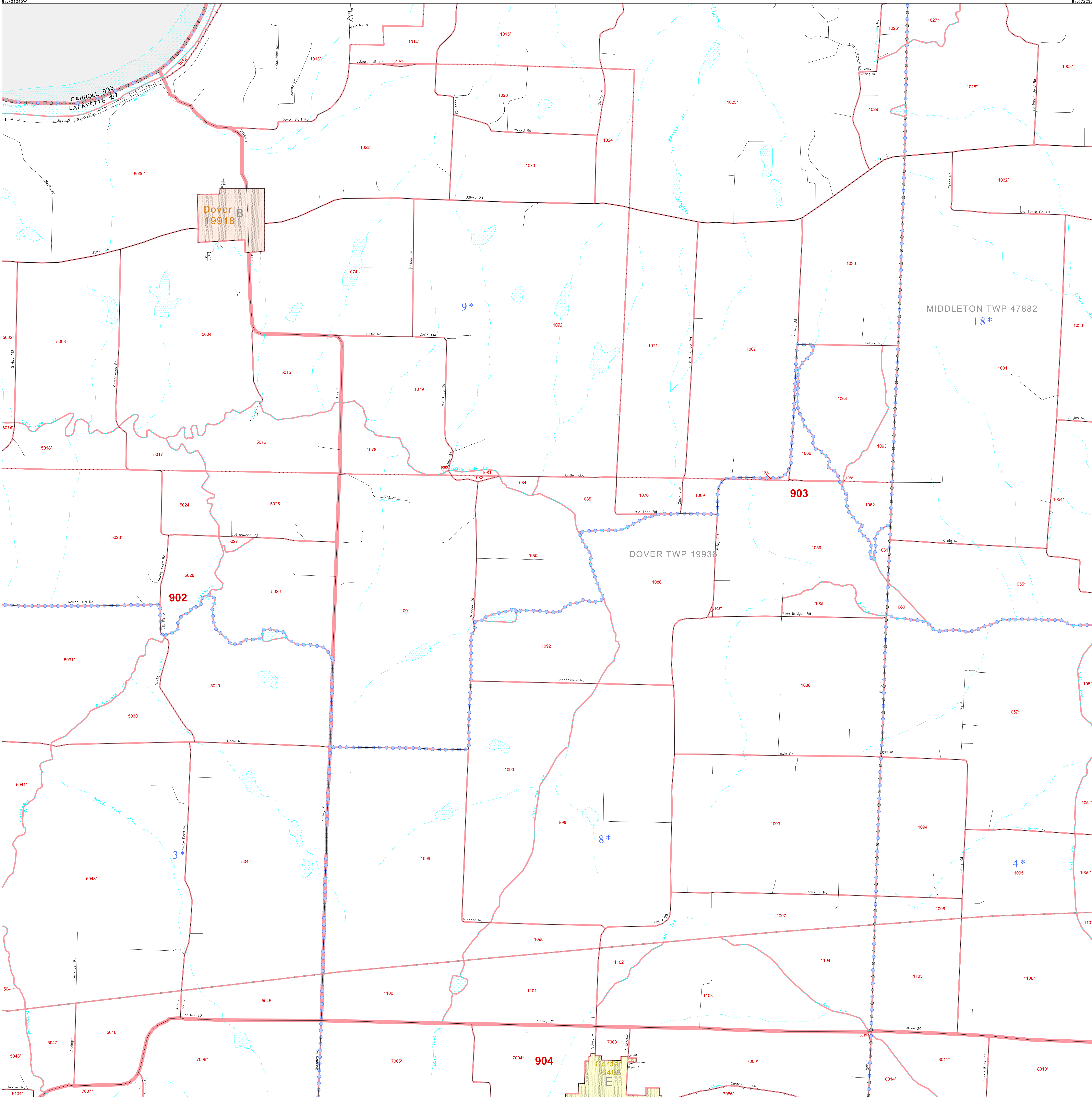


P. L. 94-171 COUNTY BLOCK MAP (CENSUS 2000)

39 216888N
93 721245W

39 216888N
93 721245W



GEOGRAPHIC AREAS LEGEND

SYMBOL	NAME STYLE
*****	INTERNATIONAL
//////	STATE
□□□□□	COUNTY
□□□□□	MINOR CIVIL DIV. ¹
■ ■ ■ ■ ■	Incorporated Place ²
■ ■ ■ ■ ■	Census Designated Place ²
-----	Corporate Offset Boundary
●●●●●	Voting District ³
=====	Census Tract
=====	BLOCK ³
-----	Military
-----	Inset
-----	Out Area

1 A "*" following a place name indicates that the place is coterminous with a MCD. A "-" indicates that the place is also a false MCD. In both cases, the MCD name is shown only when it differs from the place name.

2 A "*" following a VTD code indicates an actual voting district. Its absence indicates that the VTD is a pseudo voting district or no information is available as to its status.

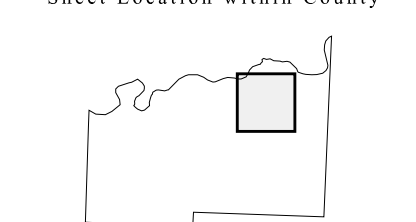
3 A "*" following a block number indicates that the block number is repeated elsewhere in the block.

39 160753N
93 721245W

39 160753N
93 721245W



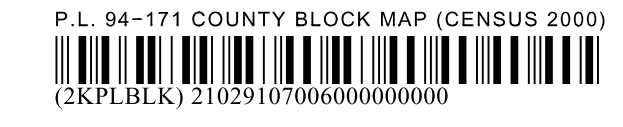
Sheet Location within County



Key to Adjacent Sheets

1	2
5	6
10	11
11	12

ST: Missouri (29)
COU: Lafayette (107)
SHEET 6 OF 17 PARENT SHEETS



All legal boundaries and names are as of January 1, 2000. The boundaries shown on this map are for Census Bureau statistical data collection and tabulation purposes only; their depiction and designation for statistical purposes does not constitute a determination of jurisdictional authority or rights of ownership or entitlement. U.S. DEPARTMENT OF COMMERCE Economics and Statistics Administration U.S. Census Bureau