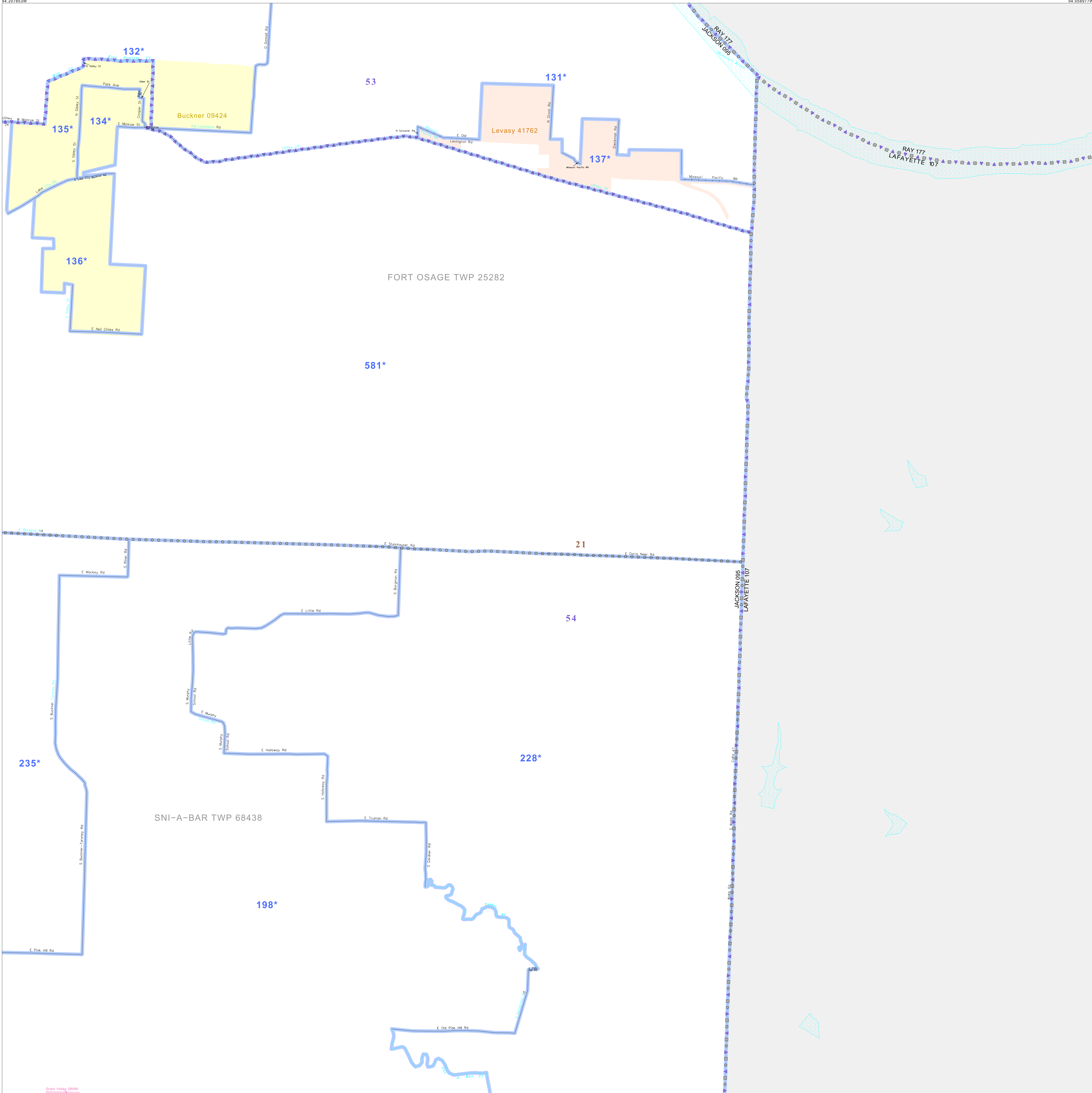


P.L. 94-171 VOTING DISTRICT/STATE LEGISLATIVE DISTRICT OUTLINE MAP (CENSUS 2000)

39 151154N
94 207853W

39 151154N
94 058977W



GEOGRAPHIC AREAS LEGEND

- SYMBOL NAME STYLE
- ***** INTERNATIONAL
- ////// STATE
- COUNTY
- ○ ○ ○ MINOR CIVIL DIV.¹
- ■ ■ ■ Incorporated Place¹
- ■ ■ ■ Census Designated Place²
- Voting District
- ● ● ● SLD-Senate
- ▲ ▲ ▲ ▲ SLD-House

Abbreviation Reference: AIR - American Indian Reservation; SDAISA - State Designated American Indian Statistical Area

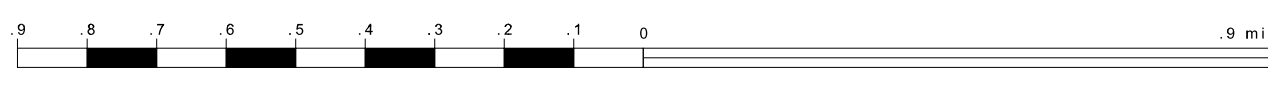
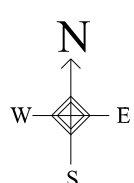
¹ A "*" following a place name indicates that the place is coextensive with a MCD. A "-" indicates that the place is also a false MCD. In both cases, the MCD name is shown only when it differs from the place name.
² A "*" following a VTD code indicates an actual voting district. Its absence indicates that the VTD is a pseudo voting district or no information is available as to its status.

Voting Districts

Code	Name
131*	FortOsageNo.11&12&28 Voting District
132*	FortOsageNo.18&19&20&27&13 Voting District
133*	FortOsageNo.5 Voting District
134*	FortOsageNo.8 Voting District
135*	FortOsageNo.1&4 Voting District
136*	FortOsageNo.6&10&15 Voting District
137*	Sni-A-BarNo.13&4&5&1&2 Voting District
198*	Sni-A-BarNo.49&51&89&90 Voting District
218*	Sni-A-BarNo.59&60 Voting District
235*	FortOsageNo.14&15&28 Voting District

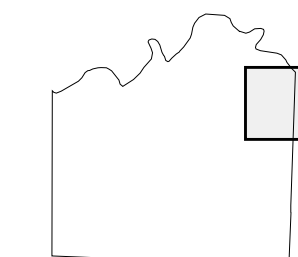
39 035038N
94 207853W

39 035038N
94 058977W



The plotted map scale is 1:17500

Sheet Location within County



Key to Adjacent Sheets

2	3
6	7
10	11

ST: Missouri (29)
 COU: Jackson (095)
 SHEET 7 OF 15 PARENT SHEETS



P.L. 94-171 VTD/SLD OUTLINE MAP (Census 2000)
 (CKFLVTD)2152499300700000000