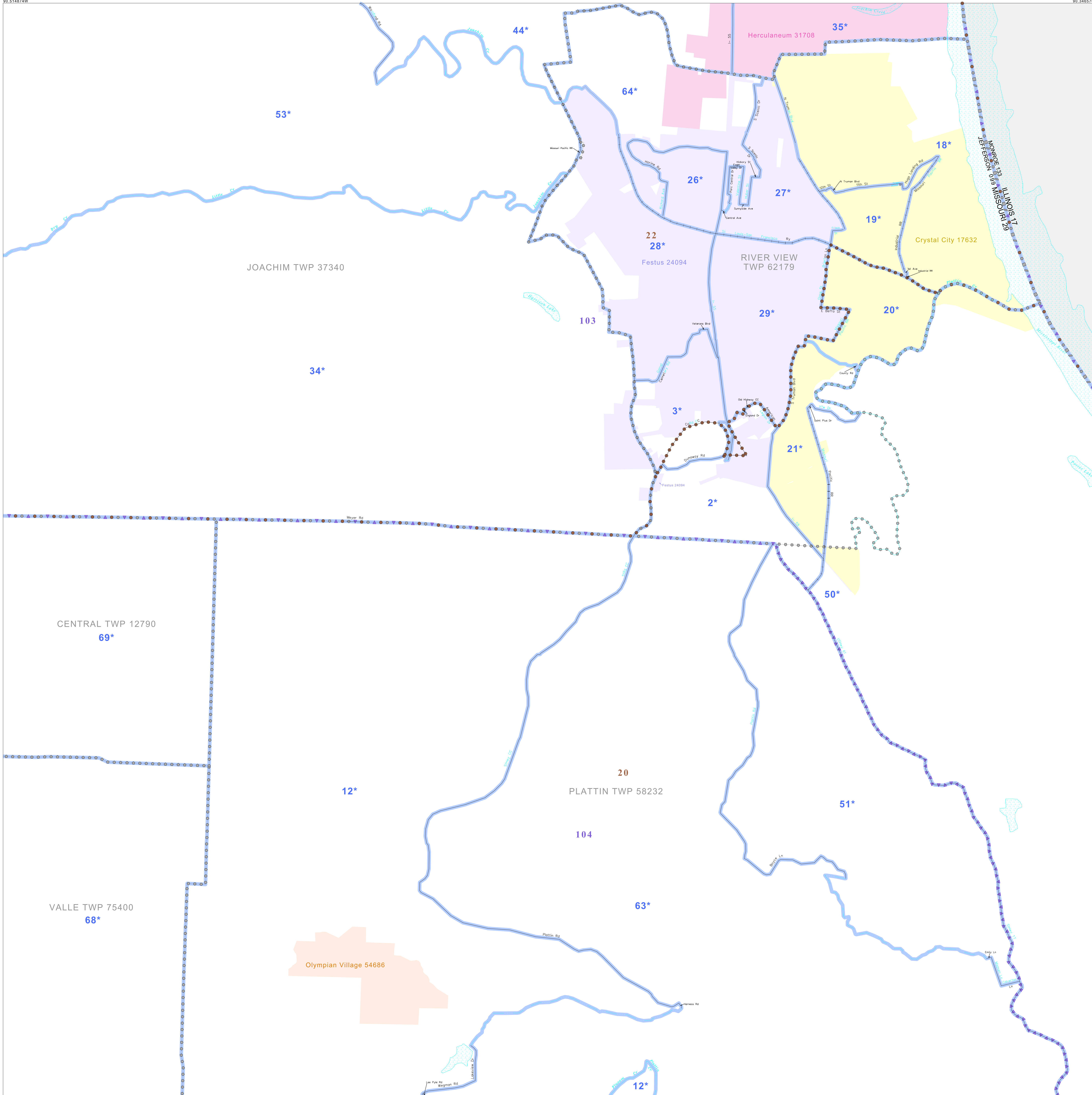


P.L. 94-171 VOTING DISTRICT/STATE LEGISLATIVE DISTRICT OUTLINE MAP (CENSUS 2000)

38.252727N
90.514874W

38.252727N
90.346970W



GEOGRAPHIC AREAS LEGEND

SYMBOL	NAME STYLE
*****	INTERNATIONAL
//////	STATE
□□□□	COUNTY
□□□□	MINOR CIVIL DIV. ¹
■	Incorporated Place ¹
■	Census Designated Place ²
—	Voting District
●●●●	SLD—Senate
▲▲▲▲	SLD—House

Abbreviation Reference: AIR = American Indian Reservation; SDAISA = State Designated American Indian Statistical Area

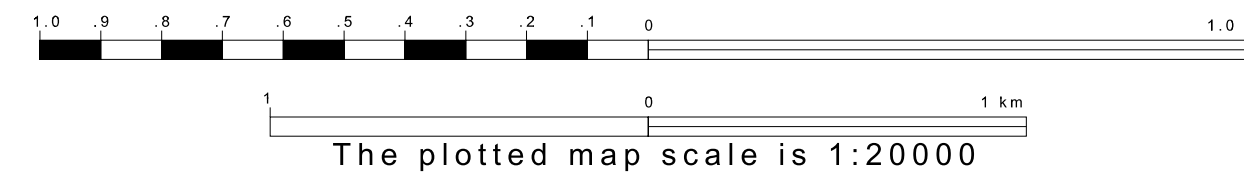
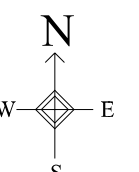
¹ A "*" following a place name indicates that the place is coterminous with a MCD. A "*" indicates that the place is also a CSD. In both cases, the MCD name is shown only when it differs from the place name.
² A "*" following a VTD code indicates an actual voting district. Its absence indicates that the VTD is a pseudo voting district or no information is available as to its status.

Voting Districts

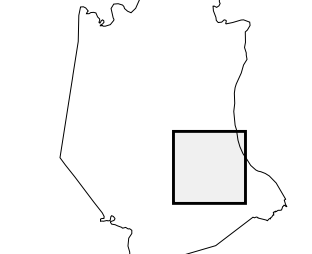
Code	Name
1*	Airport20 Voting District
2*	Airport22 Voting District
3*	Athens (Olympian Village) Ward 1&2
18*	Crystal City Ward 1
19*	Crystal City Ward 2
20*	Crystal City Ward 3
21*	Crystal City Ward 4
26*	Festus Ward 1
27*	Festus Ward 2
28*	Festus Ward 3
29*	Festus Ward 4
34*	Historic Voting District
35*	Herculaneum Ward 1&2&3
44*	Harlan Voting District
50*	Jefferson 07 - 09 / Rush Tower Voting District
51*	Jefferson 07 - 104 Voting District
55*	Magawick Voting District
63*	Plattin Voting District
64*	River View Voting District
68*	Valle Pineland Voting District
69*	Victoria Voting District

38.120055N
90.514874W

38.120055N
90.346970W



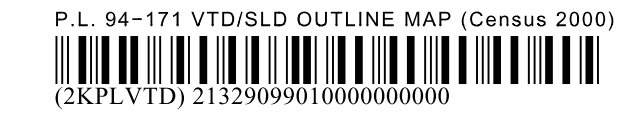
Sheet Location within County



Key to Adjacent Sheets

6	7
9	10
13	14

ST: Missouri (29)
 COU: Jefferson (099)
 SHEET 10 OF 15 PARENT SHEETS



All legal boundaries and names are as of January 1, 2000. The boundaries shown on this map are for Census Bureau statistical data collection and tabulation purposes only; their depiction and designation for statistical purposes does not constitute a determination of jurisdictional authority or rights of ownership or entitlement. U.S. DEPARTMENT OF COMMERCE Economics and Statistics Administration U.S. Census Bureau