

P.L. 94-171 VOTING DISTRICT/STATE LEGISLATIVE DISTRICT OUTLINE MAP (CENSUS 2000)

49 126768N  
92 147893W

49 126768N  
91 910347W

LIBERTY TWP 42176

MYRTLE TWP 51032

GEOGRAPHIC AREAS LEGEND

SYMBOL	NAME STYLE
*****	INTERNATIONAL
//////	STATE
□□□□	COUNTY
○	MINOR CIVIL DIV. <sup>1</sup>
■	Incorporated Place <sup>1</sup>
■	Census Designated Place <sup>1</sup>
—	Voting District <sup>2</sup>
●	SLD-Senate
▲	SLD-House

Abbreviation Reference: AIR - American Indian Reservation; SDAISA - State Designated American Indian Statistical Area

<sup>1</sup> A "\*" following a place name indicates that the place is coterminous with a MCD. A "-" indicates that the place is also a false MCD. In both cases, the MCD name is shown only when it differs from the place name.  
<sup>2</sup> A "\*" following a VTD code indicates an actual voting district. Its absence indicates that the VTD is a pseudo voting district or no information is available as to its status.

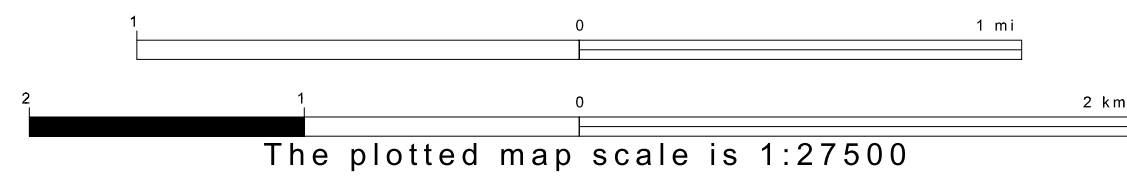
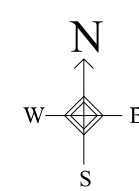
Voting Districts

Code	Name
3*	Edina Voting District
5*	Knox City Voting District
6*	Newark Voting District

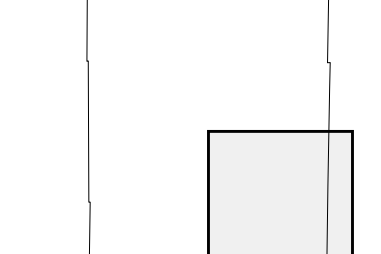


39 844335N  
92 147993W

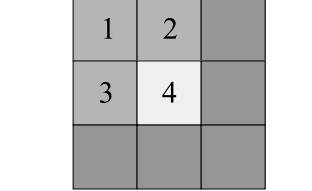
39 844335N  
91 910347W



Sheet Location within County



Key to Adjacent Sheets



ST: Missouri (29)  
 COU: Knox (103)  
 SHEET 4 OF 4 PARENT SHEETS

All legal boundaries and names are as of January 1, 2000. The boundaries shown on this map are for Census Bureau statistical data collection and tabulation purposes only; their depiction and designation for statistical purposes does not constitute a determination of jurisdictional authority or rights of ownership or entitlement. U.S. DEPARTMENT OF COMMERCE Economics and Statistics Administration U.S. Census Bureau

