

P.L. 94-171 VOTING DISTRICT/STATE LEGISLATIVE DISTRICT OUTLINE MAP (CENSUS 2000)

GEOGRAPHIC AREAS LEGEND

SYMBOL	NAME STYLE
*****	INTERNATIONAL
//////	STATE
□□□□	COUNTY
○●○●○●	MINOR CIVIL DIV ¹
■	Incorporated Place ¹
■	Census Designated Place ²
▭	Voting District
●●●●●	SLD-Senate
▲▲▲▲▲	SLD-House
⋮	Minority
Inset	Inset
Out Area	Out Area

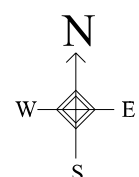
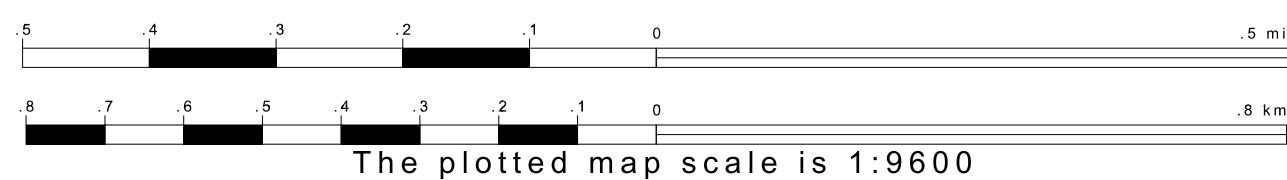
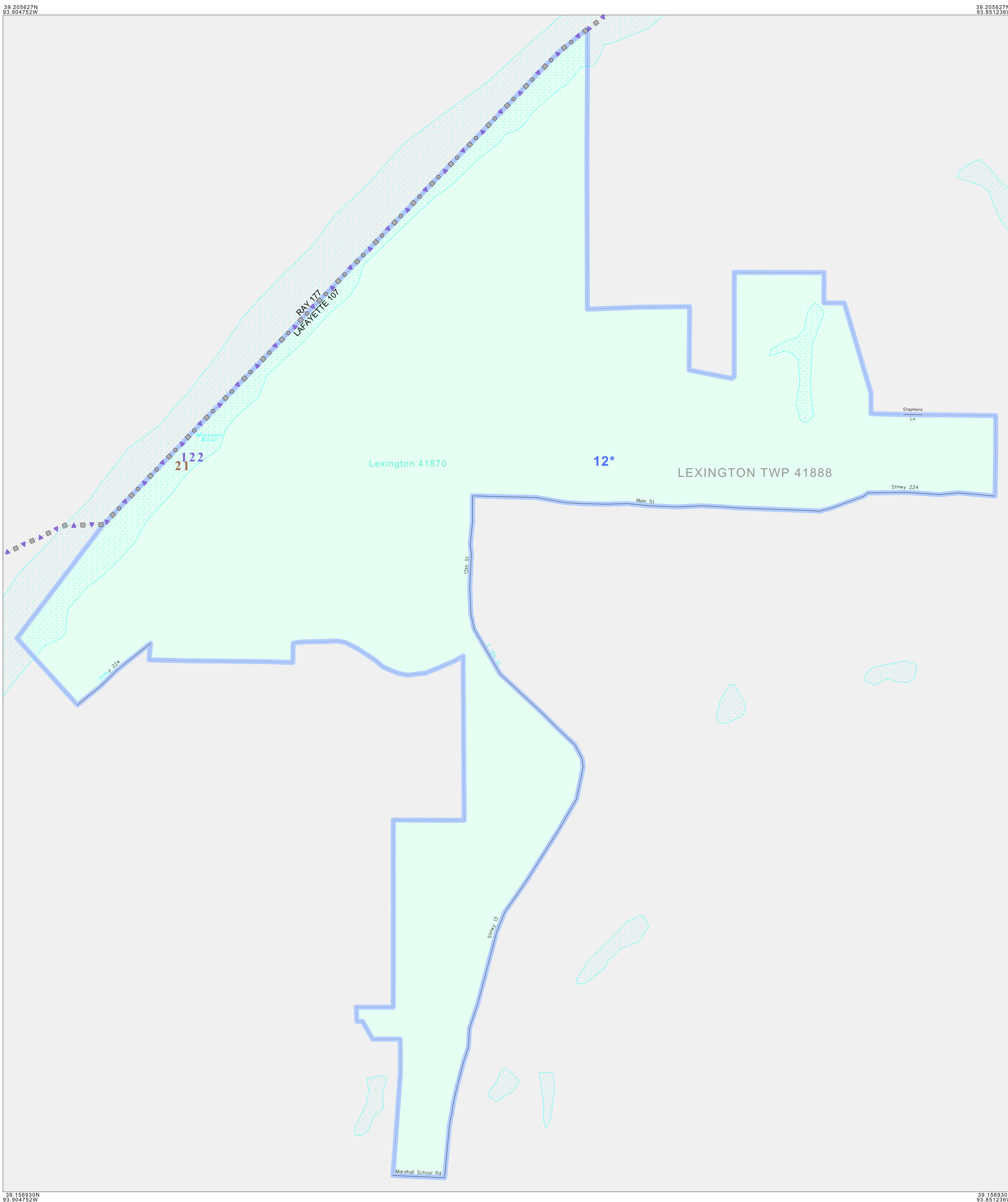
Abbreviation Reference: AIR - American Indian Reservation; SDAISA - State Designated American Indian Statistical Area

¹ A " " following a place name indicates that the place is coterminous with a MCD. A " " indicates that the place is also a CDP. In both cases, the MCD name is shown only when it differs from the place name.

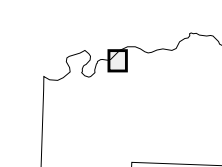
² A " " following a VTD code indicates an actual voting district. Its absence indicates that the VTD is a pseudo voting district or no information is available as to its status.

Voting Districts

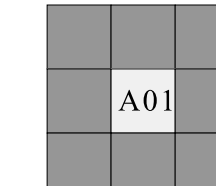
Code	Name
12*	Lexington/Wards 1&2



Sheet Location within County



Key to Adjacent Sheets



ST: Missouri (29)
 COU: Lafayette (107)
 INSET SHEET A01

