

P.L. 94-171 VOTING DISTRICT/STATE LEGISLATIVE DISTRICT OUTLINE MAP (CENSUS 2000)

40 034898N
91 894121W

40 034898N
91 894121W

GEOGRAPHIC AREAS LEGEND

SYMBOL	NAME STYLE
*****	INTERNATIONAL
//////	STATE
□□□□□□	COUNTY
○●○●○●	MINOR CIVIL DIV ¹
■ ■ ■ ■ ■ ■	Incorporated Place ¹
■ ■ ■ ■ ■ ■	Census Designated Place ²
— — — — —	Voting District
● ● ● ● ●	SLD-Senate
▲ ▲ ▲ ▲ ▲	SLD-House

Military Inset Out Area

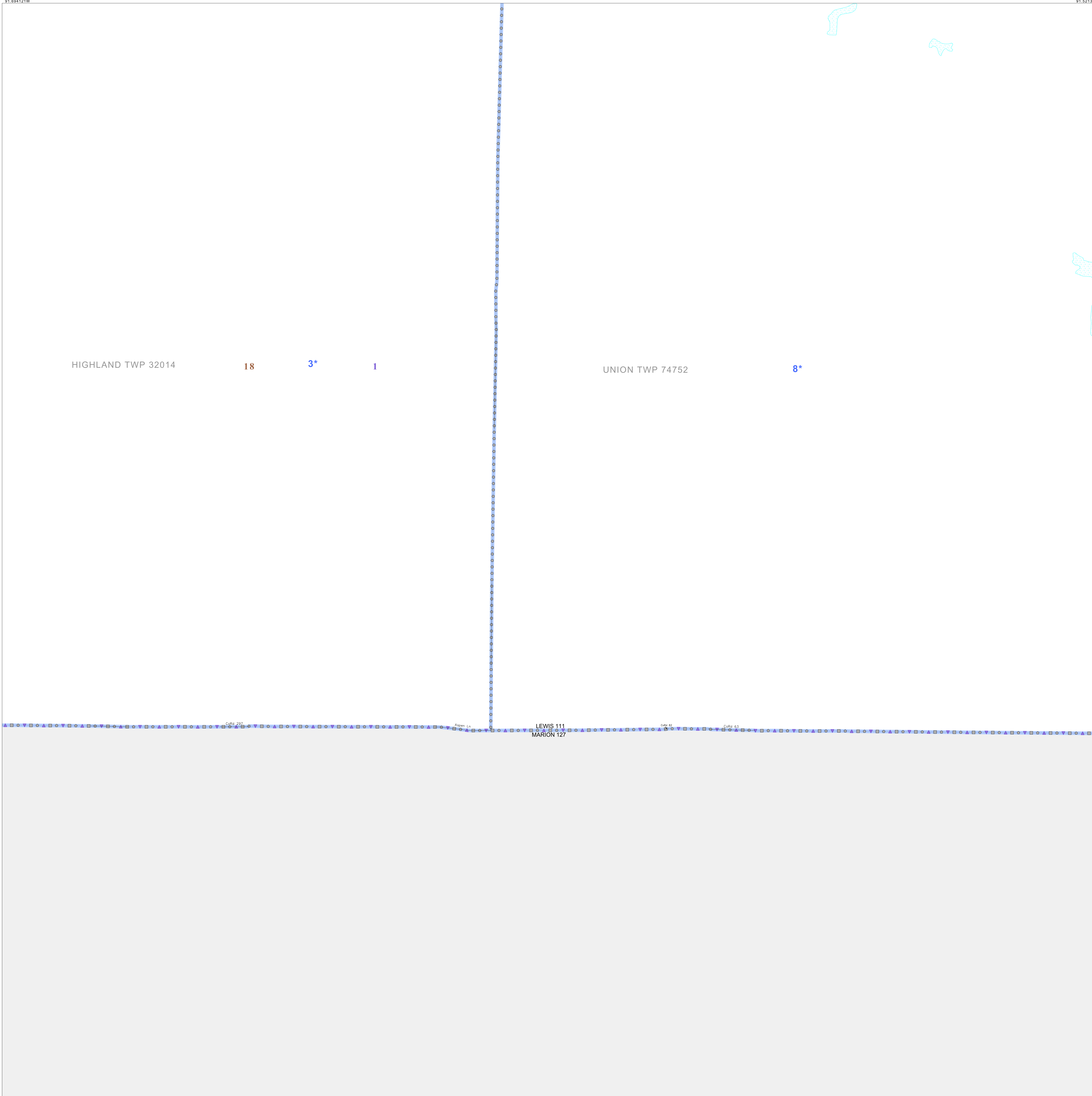
Abbreviation Reference: AIR = American Indian Reservation; SDAISA = State Designated American Indian Statistical Area

¹ A " " following a place name indicates that the place is coterminous with a MCD. A " " indicates that the place is also a false MCD. In both cases, the MCD name is shown only when it differs from the place name.

² A " " following a VTD code indicates an actual voting district. Its absence indicates that the VTD is a pseudo voting district or no information is available as to its status.

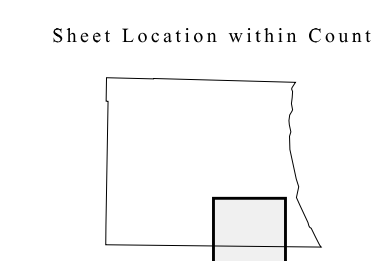
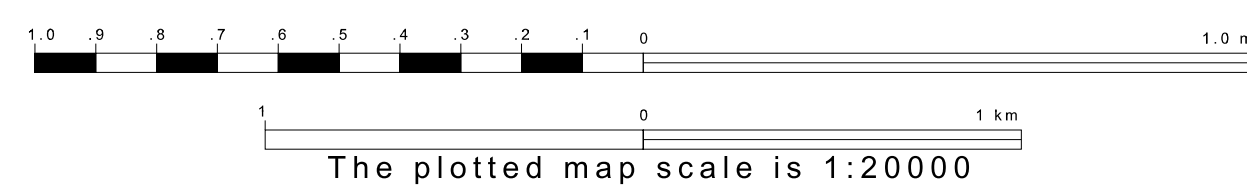
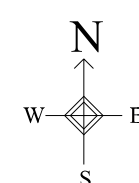
Voting Districts

Code	Name
3*	Durham Voting District
8*	Maywood Voting District



39 802219N
91 894121W

39 802219N
91 894121W



Key to Adjacent Sheets

6	7	8
10	11	12

ST: Missouri (29)
COU: Lewis (111)
SHEET 11 OF 12 PARENT SHEETS