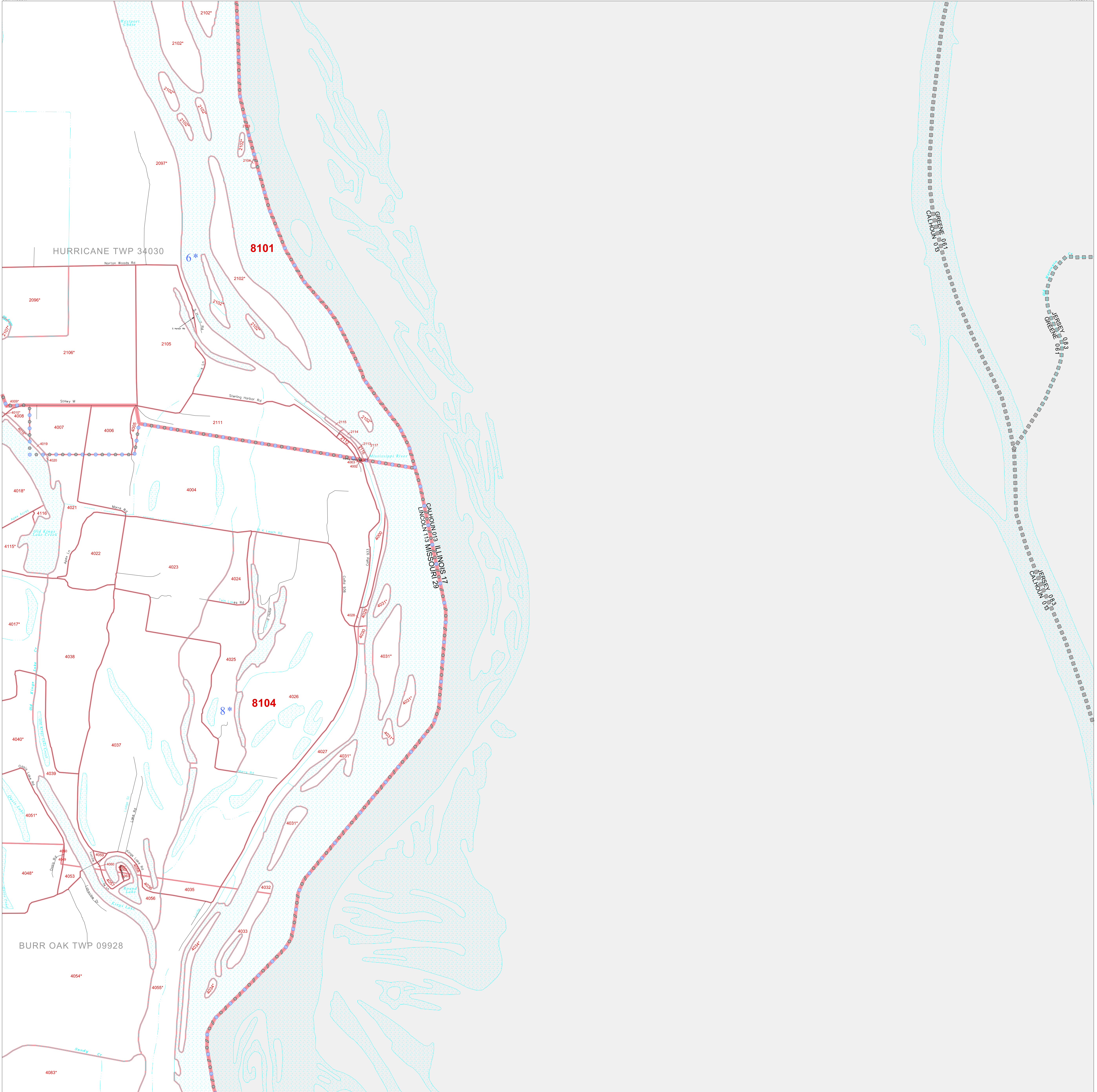


39 165166N
90 741869W

39 165166N
90 592664W



GEOGRAPHIC AREAS LEGEND

SYMBOL	NAME	STYLE
*****	INTERNATIONAL	
///////	STATE	
#####	COUNTY	
■■■■■	MINOR CIVIL DIV ¹	
■■■■■	Incorporated Place ¹	
■■■■■	Census Designated Place ¹	
-----	Corporate Offset Boundary	
●●●●●	Voting District ²	
■■■■■	Census Tract	
■■■■■	BLOCK ³	
■	Military	
■	Inset	
■	Out Area	

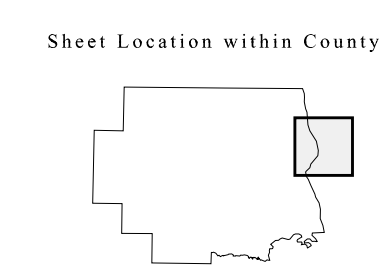
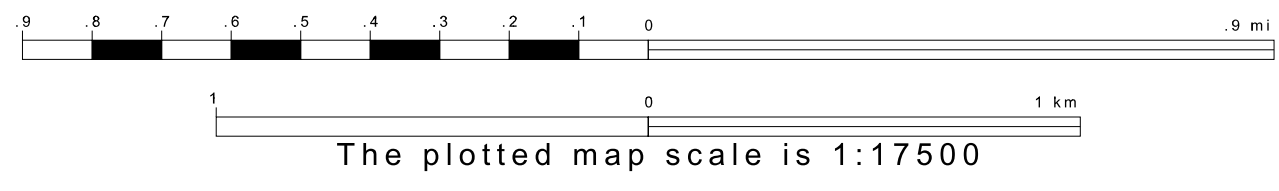
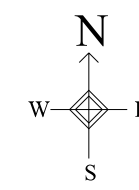
¹ A "*" following a place name indicates that the place is coterminous with a MCD. A "-" indicates that the place is also a false MCD. In both cases, the MCD name is shown only when it differs from the place name.

² A "*" following a VTD code indicates an actual voting district. Its absence indicates that the VTD is a pseudo voting district or no information is available as to its status.

³ A "*" following a block number indicates that the block number is repeated elsewhere in the block.

39 049050N
90 741869W

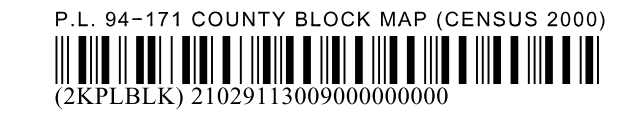
39 049050N
90 592664W



Key to Adjacent Sheets

3	4
8	9
13	14

ST: Missouri (29)
COU: Lincoln (113)
SHEET 9 OF 19 PARENT SHEETS



All legal boundaries and names are as of January 1, 2000. The boundaries shown on this map are for Census Bureau statistical data collection and tabulation purposes only; their depiction and designation for statistical purposes does not constitute a determination of jurisdictional authority or rights of ownership or entitlement. U.S. DEPARTMENT OF COMMERCE Economics and Statistics Administration U.S. Census Bureau