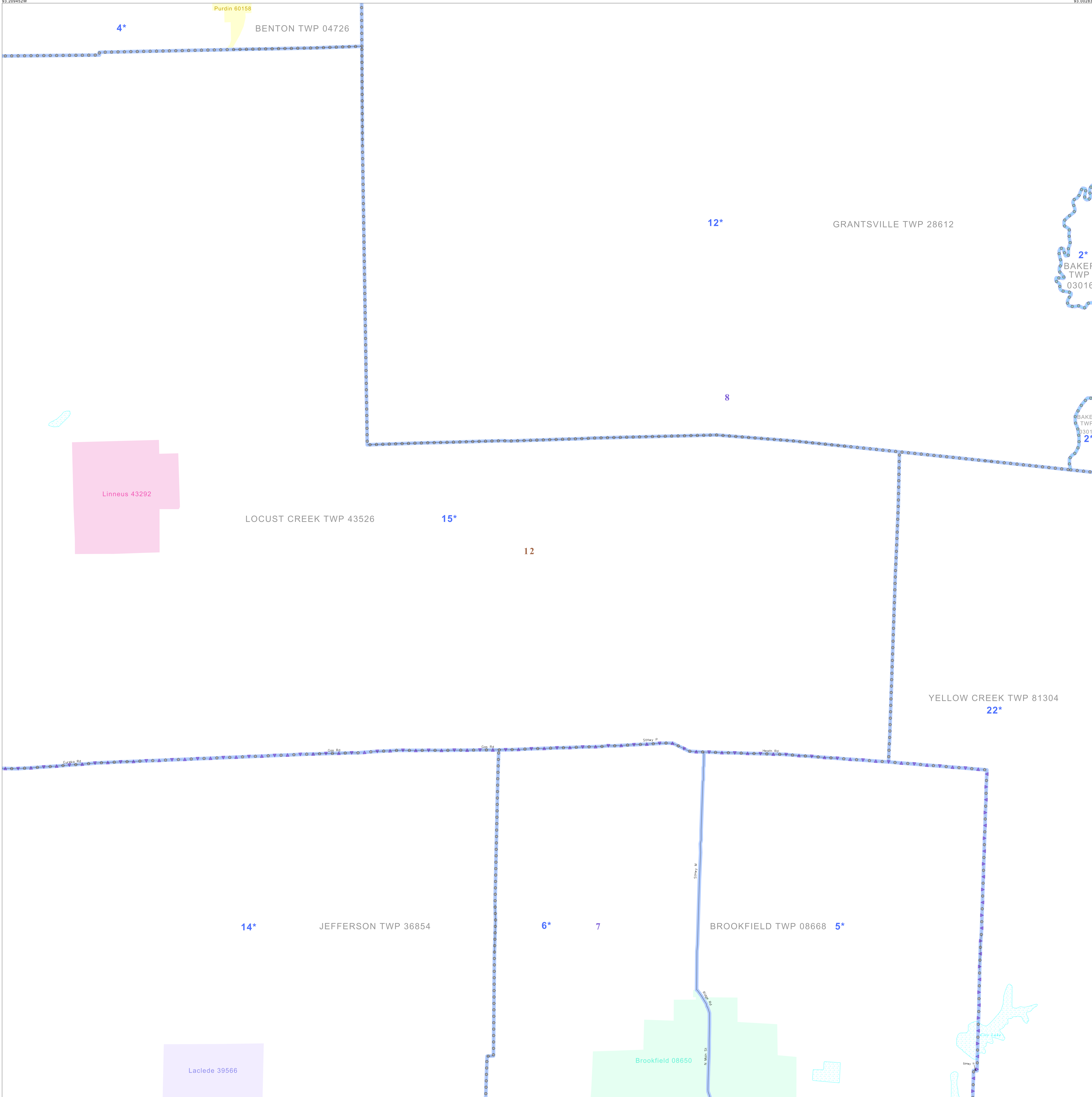


P.L. 94-171 VOTING DISTRICT/STATE LEGISLATIVE DISTRICT OUTLINE MAP (CENSUS 2000)

39 848261N
93 209452W

39 848261N
93 209452W



GEOGRAPHIC AREAS LEGEND

SYMBOL	NAME STYLE
*****	INTERNATIONAL
//////	STATE
□□□□□□	COUNTY
○ ○ ○ ○ ○ ○	MINOR CIVIL DIV. ¹
■ ■ ■ ■ ■ ■	Incorporated Place ¹
■ ■ ■ ■ ■ ■	Census Designated Place ²
— — — — —	Voting District ²
● ● ● ● ● ●	SLD-Senate
▲ ▲ ▲ ▲ ▲ ▲	SLD-House

Military
 Inset
 Out Area

Abbreviation Reference: AIR - American Indian Reservation; SDAISA - State Designated American Indian Statistical Area

¹ A "*" following a place name indicates that the place is coterminous with a MCD. A "-" indicates that the place is also a false MCD. In both cases, the MCD name is shown only when it differs from the place name.

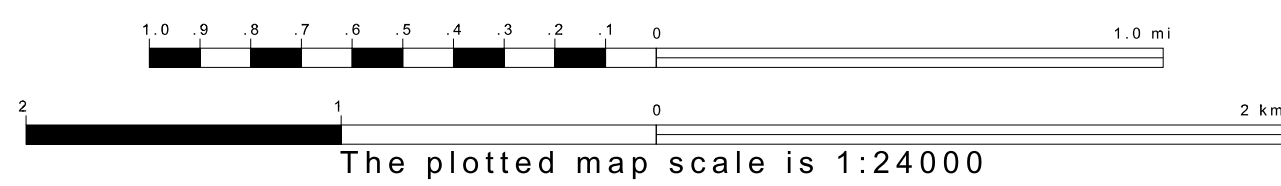
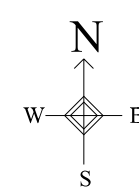
² A "*" following a VTD code indicates an actual voting district. Its absence indicates that the VTD is a pseudo voting district or no information is available as to its status.

Voting Districts

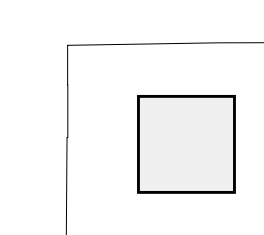
Code	Name
2*	Baker Voting District
4*	BentonSouth Voting District
5*	BrookfieldNo. 1 Voting District
6*	BrookfieldNo. 2 Voting District
12*	Grantsville Voting District
14*	Jefferson Voting District
15*	LocustCreek Voting District
22*	YellowCreek Voting District

39 789039N
93 209452W

39 789039N
93 209452W



Sheet Location within County



Key to Adjacent Sheets

1	2	3
4	5	6
7	8	9

ST: Missouri (29)
 COU: Linn (115)
 SHEET 5 OF 9 PARENT SHEETS

