

P. L. 94-171 COUNTY BLOCK MAP (CENSUS 2000)

39 988448N
93.997048W

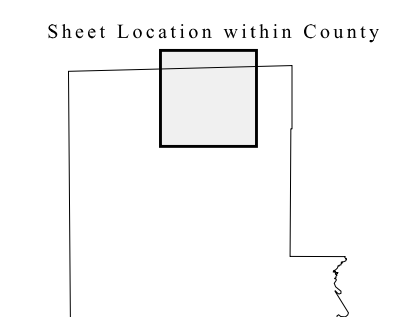
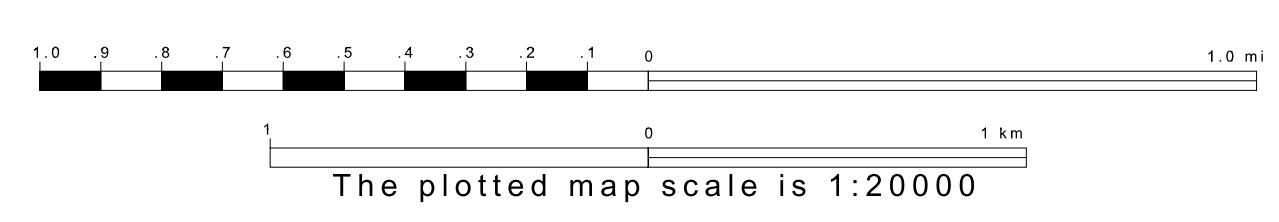
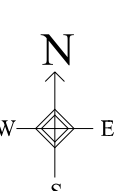
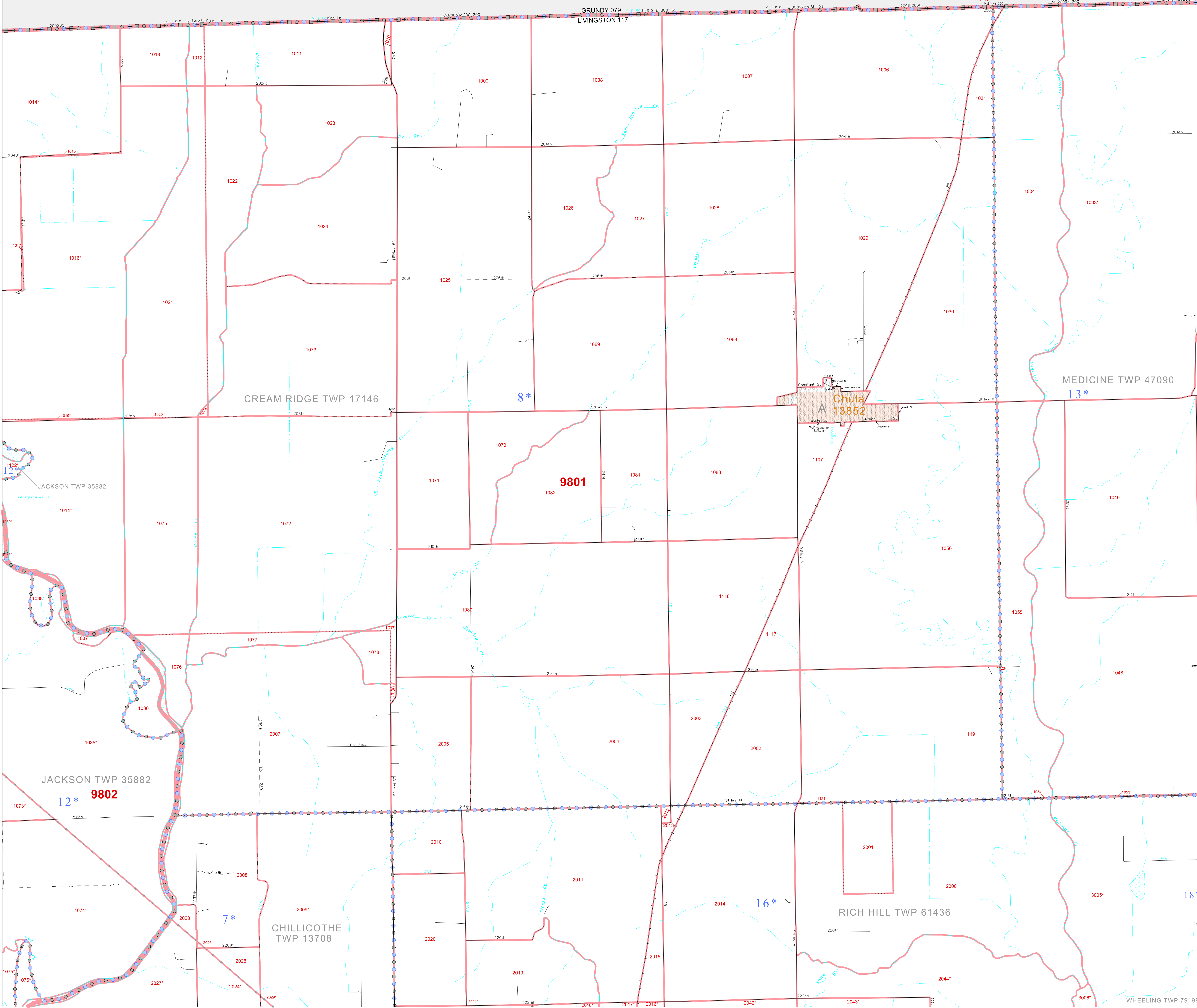
39 988448N
93.420601W

GEOGRAPHIC AREAS LEGEND

SYMBOL	NAME STYLE
*****	INTERNATIONAL
//////	STATE
■■■■■	COUNTY
○○○○○	MINOR CIVIL DIV'
■■■■■	Incorporated Place'
■■■■■	Census Designated Place'
.....	Corporate Offset Boundary
●●●●●	Voting District'
■■■■■	Census Tract
■■■■■	BLOCK'

Military Inset Out Area

1 A "*" following a place name indicates that the place is coterminous with a MCD. A "-" indicates that the place is also a false MCD. In both cases, the MCD name is shown only when it differs from the place name.
 2 A "*" following a VTD code indicates an actual voting district. Its absence indicates that the VTD is a pseudo voting district or no information is available as to its status.
 3 A "-" following a block number indicates that the block number is repeated elsewhere in the block.



Key to Adjacent Sheets

1	2	3
4	5	6

ST: Missouri (29)
 COU: Livingston (117)
 SHEET 2 OF 9 PARENT SHEETS



All legal boundaries and names are as of January 1, 2000. The boundaries shown on this map are for Census Bureau statistical data collection and tabulation purposes only; their depiction and designation for statistical purposes does not constitute a determination of jurisdictional authority or rights of ownership or entitlement. U.S. DEPARTMENT OF COMMERCE Economics and Statistics Administration U.S. Census Bureau