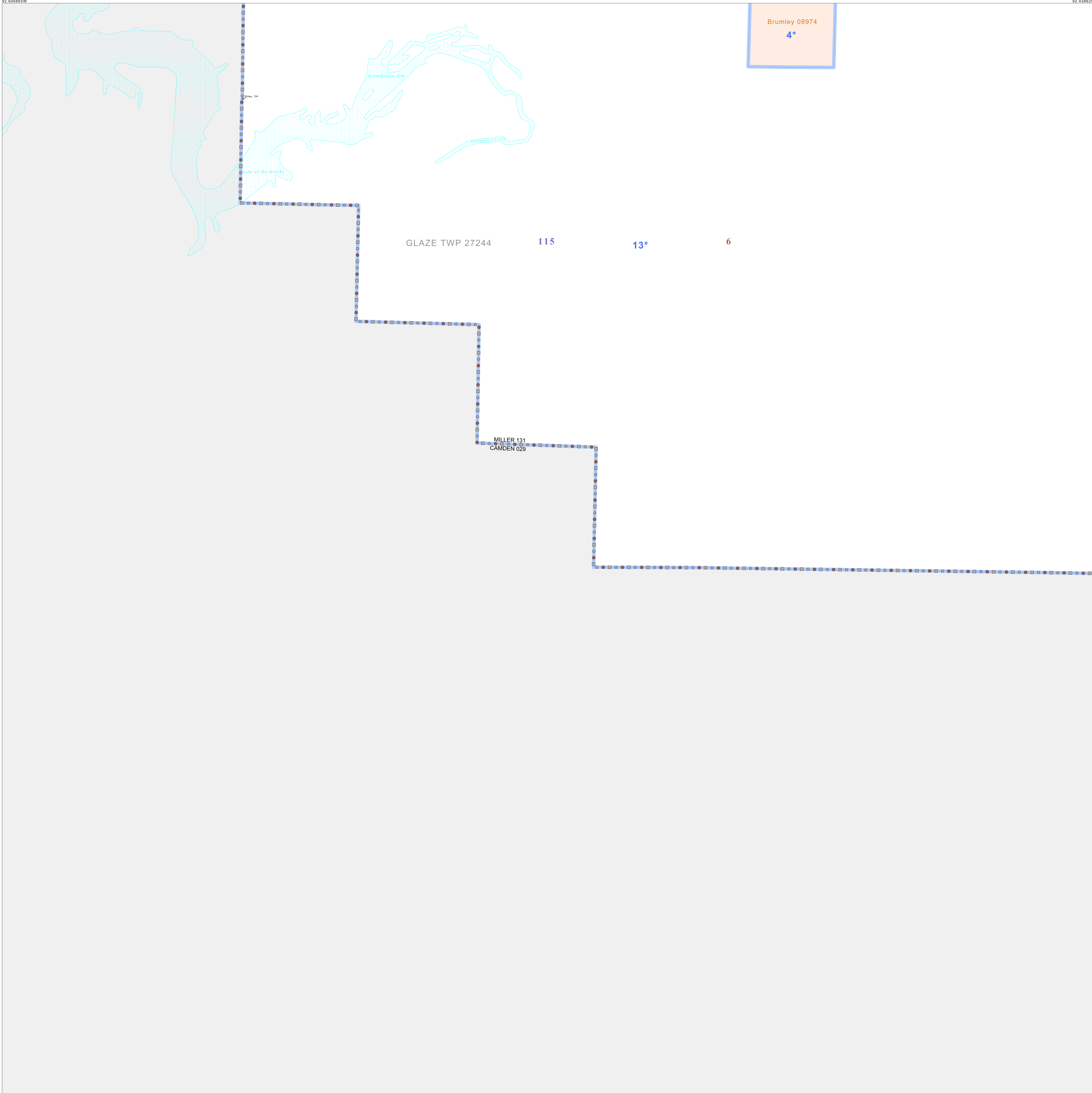


P.L. 94-171 VOTING DISTRICT/STATE LEGISLATIVE DISTRICT OUTLINE MAP (CENSUS 2000)

38 090927N
92 438629W

38 090927N
92 438629W



GEOGRAPHIC AREAS LEGEND

SYMBOL	NAME STYLE
*****	INTERNATIONAL
//////	STATE
□□□□	COUNTY
○●○●○●	MINOR CIVIL DIV. ¹
■	Incorporated Place ¹
■	Census Designated Place ²
—	Voting District
●●●●●	SLD-Senate
▲▲▲▲▲	SLD-House

Military
 Inset
 Out Area

Abbreviation Reference: AIR - American Indian Reservation; SDAISA - State Designated American Indian Statistical Area

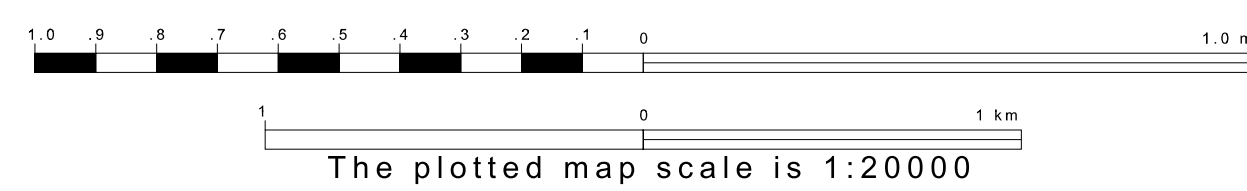
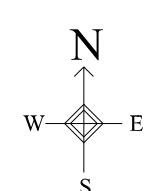
¹ A "*" following a place name indicates that the place is coterminous with a MCD. A "-" indicates that the place is also a MCD. In both cases, the MCD name is shown only when it differs from the place name.
² A "*" following a VTD code indicates an actual voting district. Its absence indicates that the VTD is a pseudo voting district or no information is available as to its status.

Voting Districts

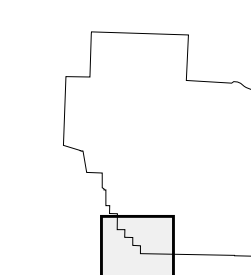
Code	Name
4*	Brumley Voting District
13*	Keethron Voting District

37 058205N
92 438629W

37 058205N
92 438629W



Sheet Location within County



Key to Adjacent Sheets

8	9	10
	12	13

ST: Missouri (29)
 COU: Miller (131)
 SHEET 12 OF 14 PARENT SHEETS