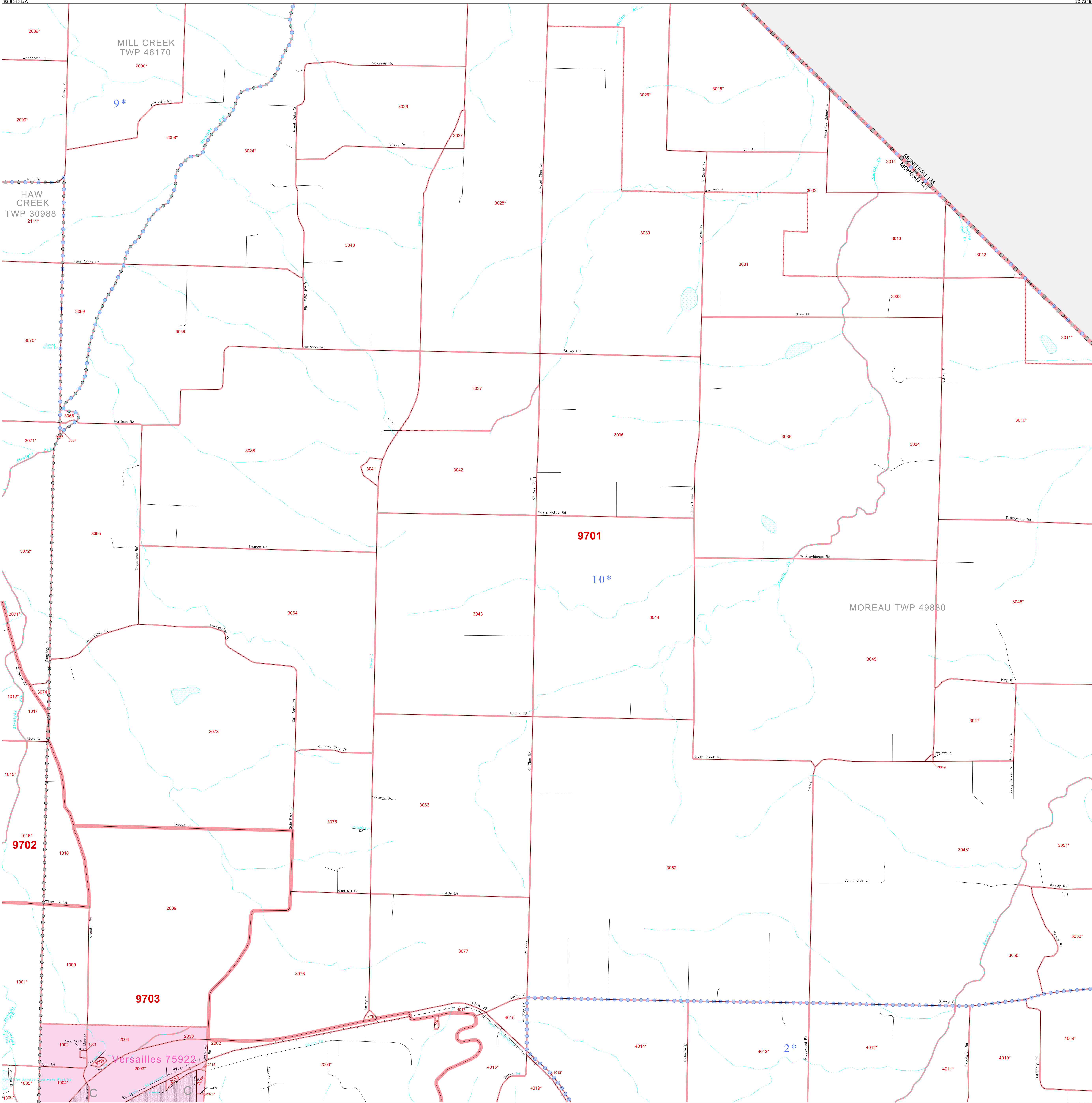


P. L. 94-171 COUNTY BLOCK MAP (CENSUS 2000)

38 439077N  
92 851512W

38 439077N  
92 724960W



**GEOGRAPHIC AREAS LEGEND**

SYMBOL	NAME STYLE
*****	INTERNATIONAL
//////	STATE
■■■■■	COUNTY
●●●●●	MINOR CIVIL DIV. <sup>1</sup>
Yellow box	Incorporated Place <sup>2</sup>
Pink box	Census Designated Place <sup>2</sup>
.....	Corporate Offset Boundary
.....	Voting District <sup>3</sup>
Red line	Census Tract
Red line	BLOCK <sup>3</sup>
Blue dashed box	Military
Inset box	Inset
Out Area box	Out Area

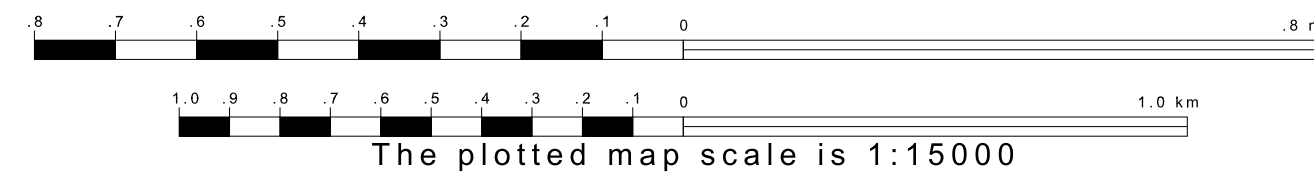
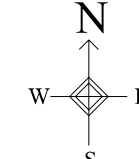
1 A "\*" following a place name indicates that the place is coterminous with a MCD. A "-" indicates that the place is also a false MCD. In both cases, the MCD name is shown only when it differs from the place name.

2 A "\*" following a VTD code indicates an actual voting district. Its absence indicates that the VTD is a pseudo voting district or no information is available as to its status.

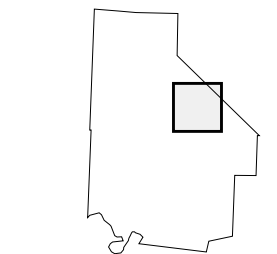
3 A "\*" following a block number indicates that the block number is repeated elsewhere in the block.

38 439538N  
92 851512W

38 439538N  
92 724960W



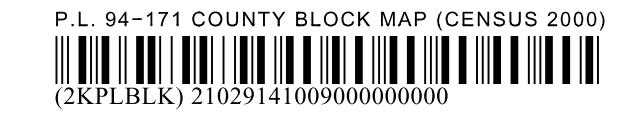
Sheet Location within County



Key to Adjacent Sheets

5	6
8	9
12	13
10	14

ST: Missouri (29)  
COU: Morgan (141)  
SHEET 9 OF 22 PARENT SHEETS



All legal boundaries and names are as of January 1, 2000. The boundaries shown on this map are for Census Bureau statistical data collection and tabulation purposes only; their depiction and designation for statistical purposes does not constitute a determination of jurisdictional authority or rights of ownership or entitlement. U.S. DEPARTMENT OF COMMERCE Economics and Statistics Administration U.S. Census Bureau