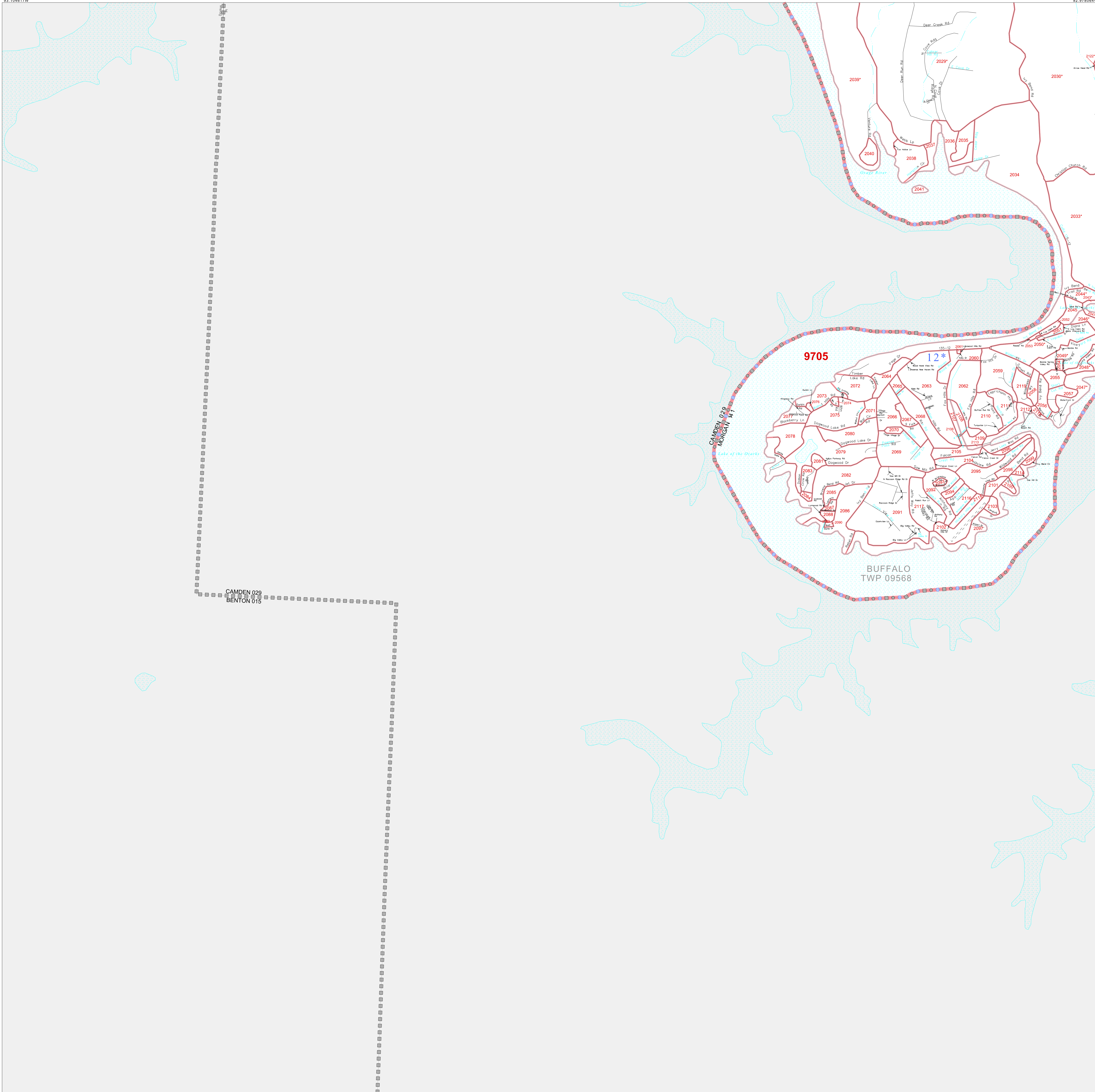


P.L. 94-171 COUNTY BLOCK MAP (CENSUS 2000)

38 240452N  
93 104617W

38 240452N  
93 104617W



GEOGRAPHIC AREAS LEGEND

SYMBOL	NAME STYLE
*****	INTERNATIONAL
=====	STATE
▣▣▣▣▣	COUNTY
▤▤▤▤▤	MINOR CIVIL DIV. <sup>1</sup>
■	Incorporated Place <sup>2</sup>
■	Census Designated Place <sup>2</sup>
-----	Corporate Offset Boundary
●●●●●	Voting District <sup>3</sup>
▬	Census Tract
▬	BLOCK <sup>3</sup>

1 A " " following a place name indicates that the place is coterminous with a MCD. A " " indicates that the place is also a false MCD. In both cases, the MCD name is shown only when it differs from the place name.

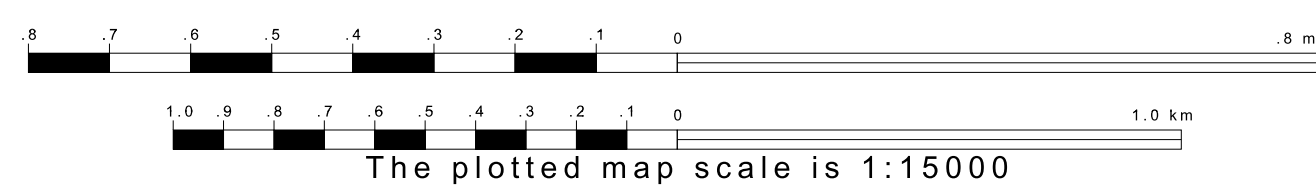
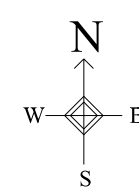
2 A " " following a VTD code indicates an actual voting district. Its absence indicates that the VTD is a pseudo voting district or no information is available as to its status.

3 A " " following a block number indicates that the block number is repeated elsewhere in the block.

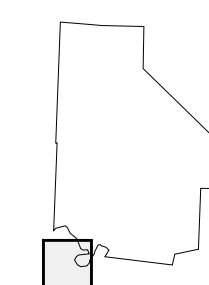
Military Inset Out Area

38 140924N  
93 104617W

38 140924N  
93 104617W



Sheet Location within County



Key to Adjacent Sheets

15	16
19	20

ST: Missouri (29)  
COU: Morgan (141)  
SHEET 19 OF 22 PARENT SHEETS

