

38 704974N
92.935879W

38 704974N
92.787143W

GEOGRAPHIC AREAS LEGEND

SYMBOL	NAME STYLE
*****	INTERNATIONAL
//////	STATE
■■■■■■	COUNTY
○○○○○	MINOR CIVIL DIV ¹
	Incorporated Place ¹
	Census Designated Place ²
	Voting District
●●●●●	SLD-Senate
▲▲▲▲▲	SLD-House
	Minority
	Inset
	Out Area

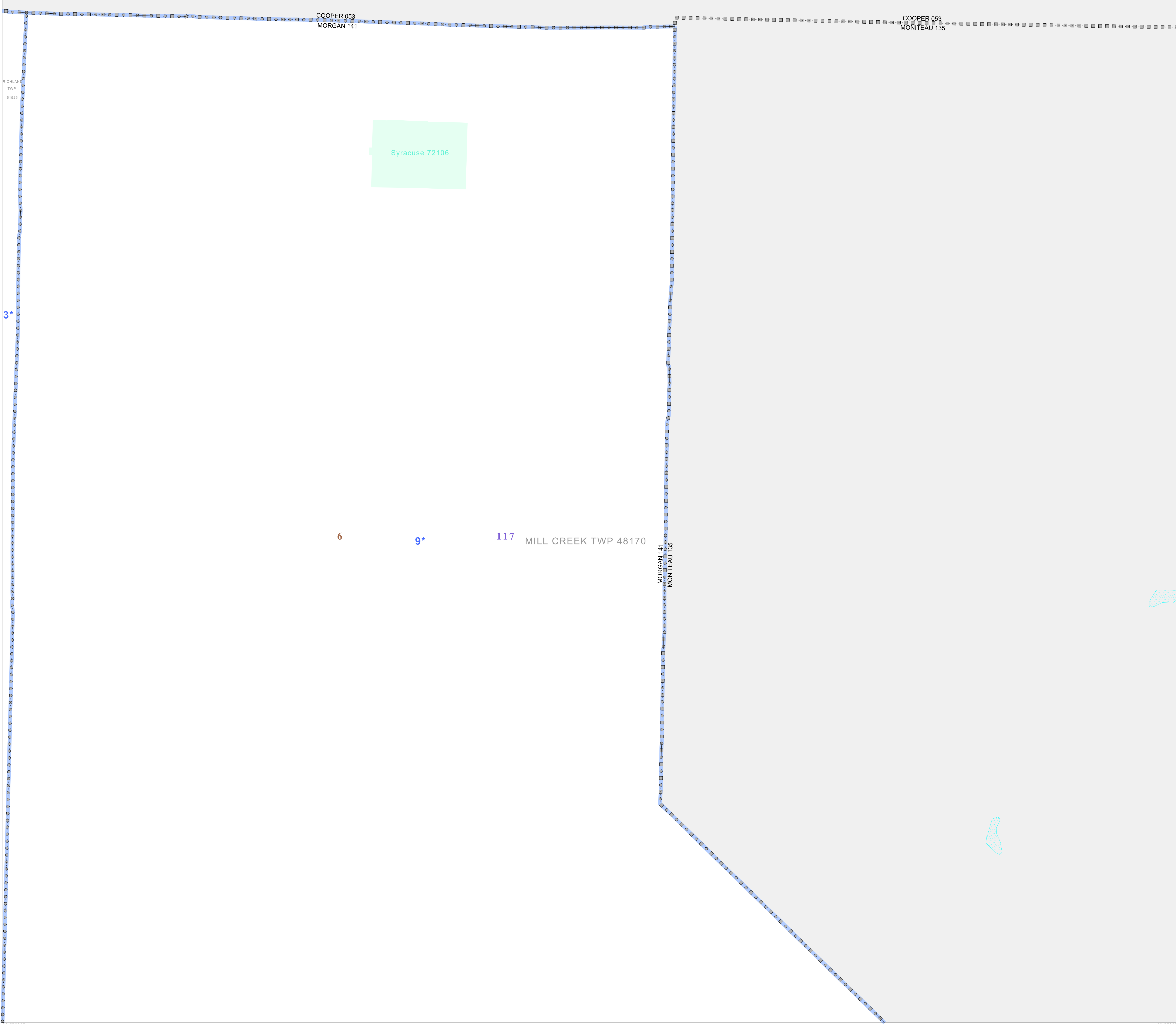
Abbreviation Reference: AIR - American Indian Reservation; SDAISA - State Designated American Indian Statistical Area

¹ A "*" following a place name indicates that the place is coterminous with a MCD. A "-" indicates that the place is also a false MCD. In both cases, the MCD name is shown only when it differs from the place name.

² A "*" following a VTD code indicates an actual voting district. Its absence indicates that the VTD is a pseudo voting district or no information is available as to its status.

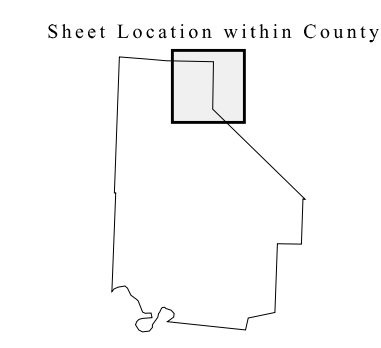
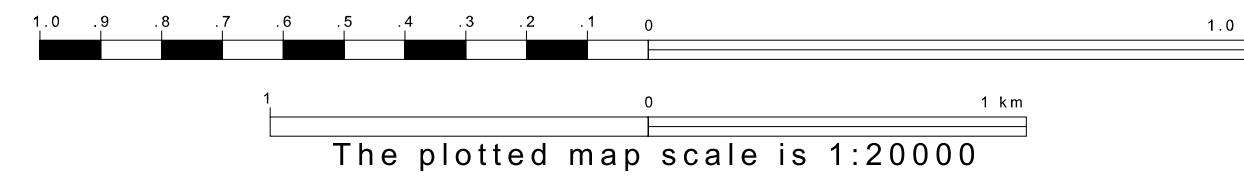
Voting Districts

Code	Name
3*	Florence Voting District
9*	SyracuseNorth&South Voting District



38 572257N
92.935879W

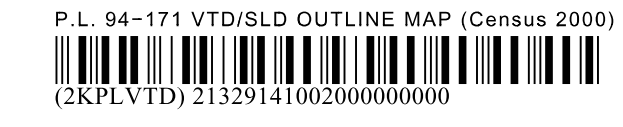
38 572257N
92.787143W



Key to Adjacent Sheets

1	2
3	4
5	

ST: Missouri (29)
COU: Morgan (141)
SHEET 2 OF 11 PARENT SHEETS



All legal boundaries and names are as of January 1, 2000. The boundaries shown on this map are for Census Bureau statistical data collection and tabulation purposes only; their depiction and designation for statistical purposes does not constitute a determination of jurisdictional authority or rights of ownership or entitlement. U.S. DEPARTMENT OF COMMERCE Economics and Statistics Administration U.S. Census Bureau