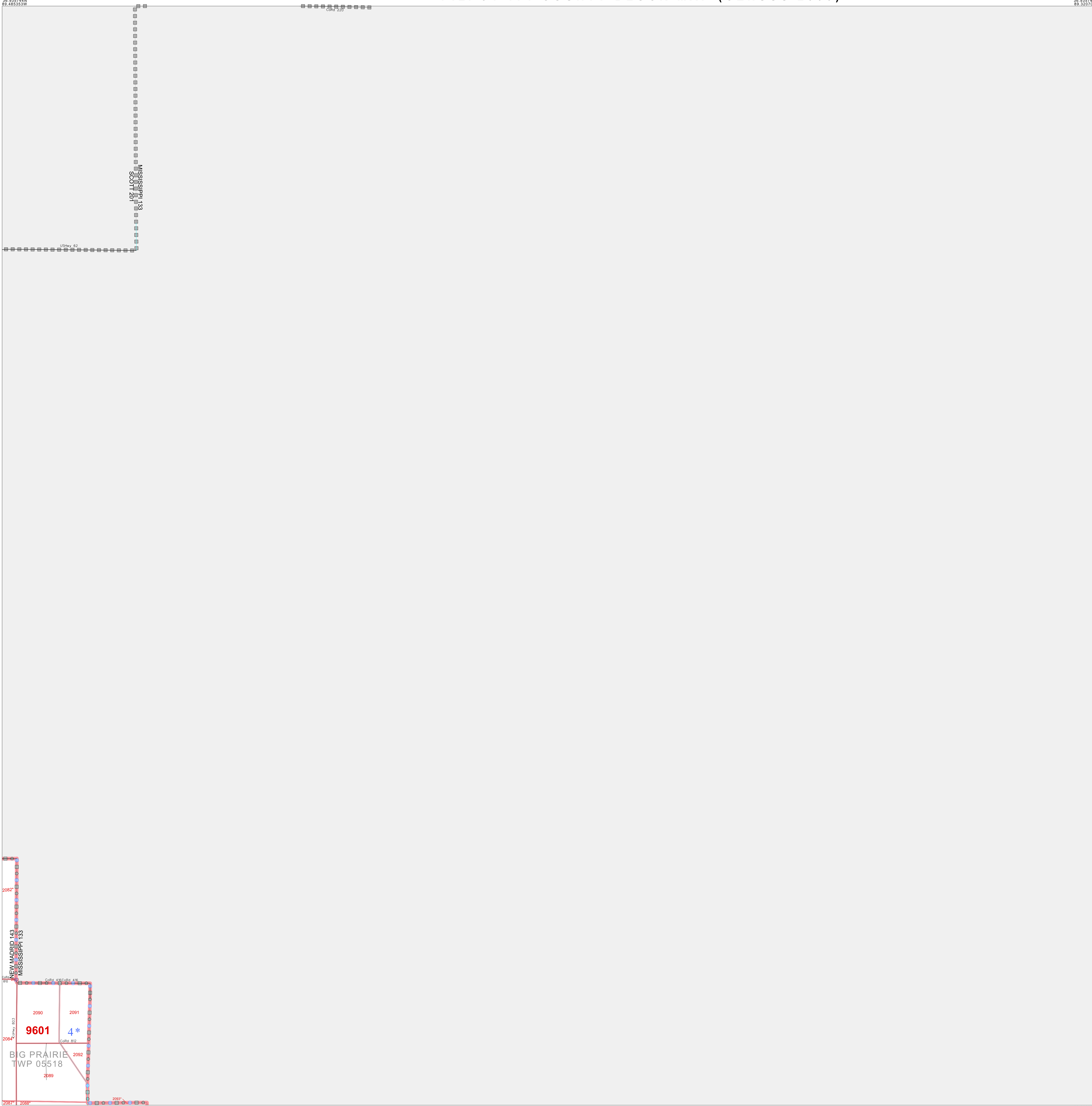


P.L. 94-171 COUNTY BLOCK MAP (CENSUS 2000)

36 935744N  
89 485353W

36 935744N  
89 320701W



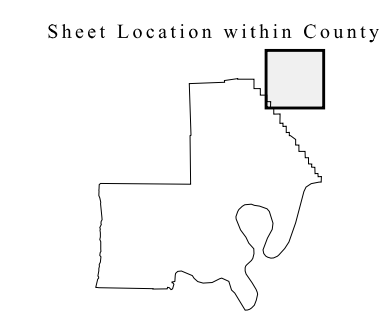
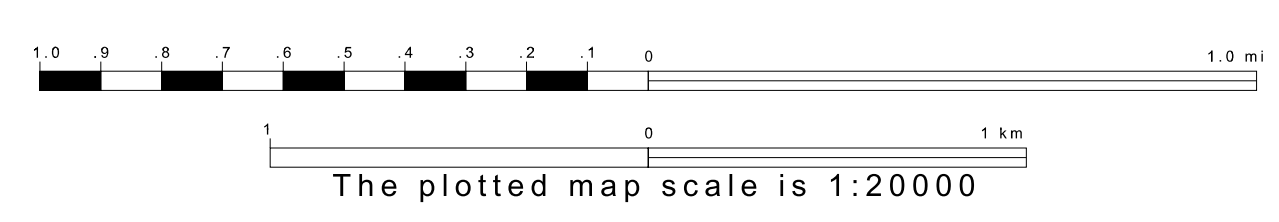
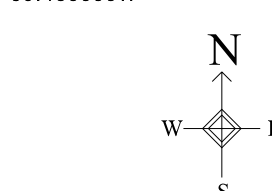
**GEOGRAPHIC AREAS LEGEND**

SYMBOL	NAME STYLE
*****	INTERNATIONAL
//////	STATE
■■■■■	COUNTY
○○○○○	MINOR CIVIL DIV <sup>1</sup>
Yellow/Pink	Incorporated Place <sup>1</sup>
Yellow/Pink	Census Designated Place <sup>1</sup>
.....	Corporate Offset Boundary
●●●●●	Voting District <sup>2</sup>
Red Line	Census Tract
Red Line	BLOCK <sup>3</sup>
Military	Inset
Out Area	Out Area

1 A "\*" following a place name indicates that the place is coterminous with a MCD. A "-" indicates that the place is also a false MCD. In both cases, the MCD name is shown only when it differs from the place name.

2 A "\*" following a VTD code indicates an actual voting district. Its absence indicates that the VTD is a pseudo voting district or no information is available as to its status.

3 A "\*" following a block number indicates that the block number is repeated elsewhere in the block.



Key to Adjacent Sheets

2	3
5	6

ST: Missouri (29)  
COU: New Madrid (143)  
SHEET 3 OF 17 PARENT SHEETS



All legal boundaries and names are as of January 1, 2000. The boundaries shown on this map are for Census Bureau statistical data collection and tabulation purposes only; their depiction and designation for statistical purposes does not constitute a determination of jurisdictional authority or rights of ownership or entitlement. U.S. DEPARTMENT OF COMMERCE Economics and Statistics Administration U.S. Census Bureau