

P.L. 94-171 COUNTY BLOCK MAP (CENSUS 2000)

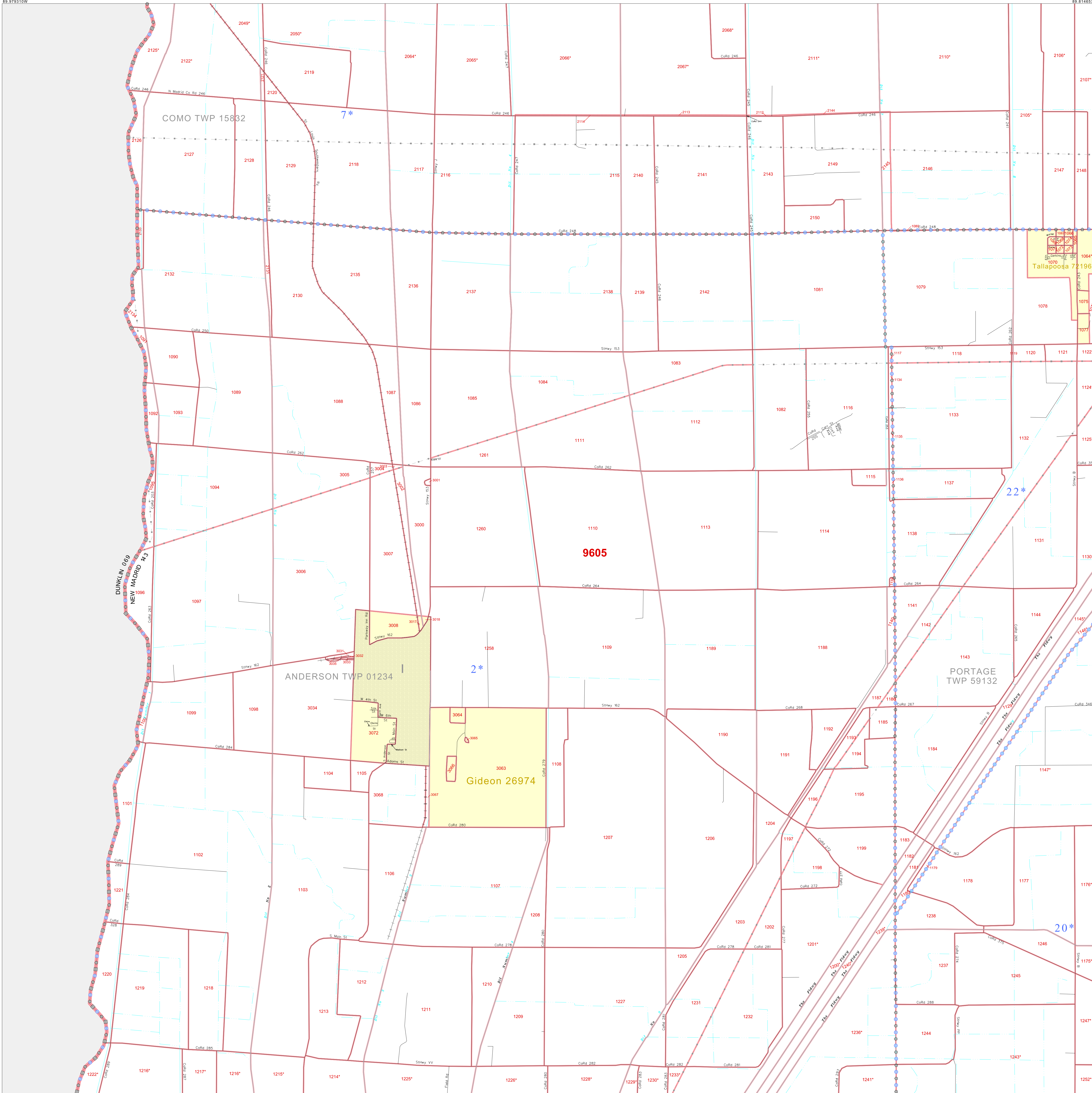
36 537466N
89 979310W

36 537466N
89 814657W

GEOGRAPHIC AREAS LEGEND

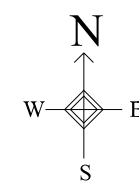
SYMBOL	NAME STYLE
*****	INTERNATIONAL
=====	STATE
▣▣▣▣▣	COUNTY
▣▣▣▣▣	MINOR CIVIL DIV. ¹
▣▣▣▣▣	Incorporated Place ²
▣▣▣▣▣	Census Designated Place ²
-----	Corporate Offset Boundary
.....	Voting District ³
-----	Census Tract
-----	BLOCK ³
-----	Military
-----	Inset
-----	Out Area

1 A "*" following a place name indicates that the place is coterminous with a MCD. A "-" indicates that the place is also a false MCD. In both cases, the MCD name is shown only when it differs from the place name.
 2 A "*" following a VTD code indicates an actual voting district. Its absence indicates that the VTD is a pseudo voting district or no information is available as to its status.
 3 A "*" following a block number indicates that the block number is repeated elsewhere in the block.



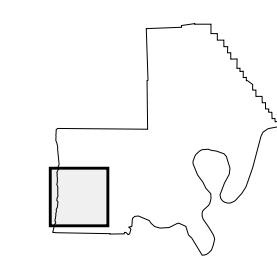
36 404706N
89 979310W

36 404706N
89 814657W



The plotted map scale is 1:20000

Sheet Location within County



Key to Adjacent Sheets

7	8
11	12
15	16

ST: Missouri (29)
 COU: New Madrid (143)
 SHEET 11 OF 17 PARENT SHEETS

P.L. 94-171 COUNTY BLOCK MAP (CENSUS 2000)

