

P.L. 94-171 VOTING DISTRICT/STATE LEGISLATIVE DISTRICT OUTLINE MAP (CENSUS 2000)

40 458446N
95.039182W

40 458446N
94.761729W

GEOGRAPHIC AREAS LEGEND

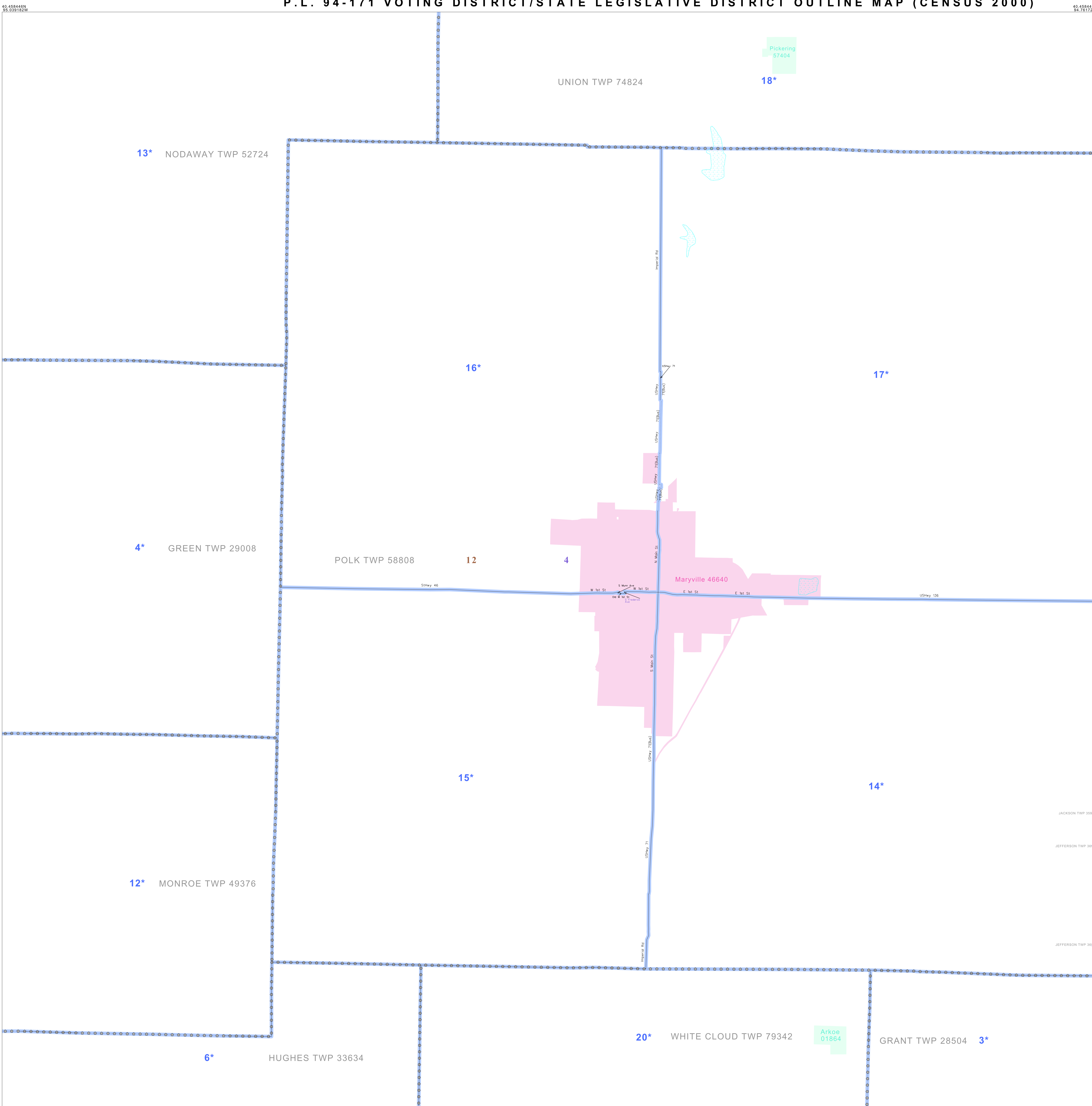
SYMBOL	NAME STYLE
*****	INTERNATIONAL
//////	STATE
□□□□□□	COUNTY
○ ○ ○ ○ ○ ○	MINOR CIVIL DIV. ¹
■ ■ ■ ■ ■ ■	Incorporated Place ¹
■ ■ ■ ■ ■ ■	Census Designated Place ²
— — — — —	Voting District
● ● ● ● ● ●	SLD-Senate
▲ ▲ ▲ ▲ ▲ ▲	SLD-House

Abbreviation Reference: AIR - American Indian Reservation; SDAISA - State Designated American Indian Statistical Area

¹ A "*" following a place name indicates that the place is consecutive with a MCD. A "-" indicates that the place is also a MCD. In both cases, the MCD name is shown only when it differs from the place name.
² A "*" following a VTD code indicates an actual voting district. Its absence indicates that the VTD is a pseudo voting district or no information is available as to its status.

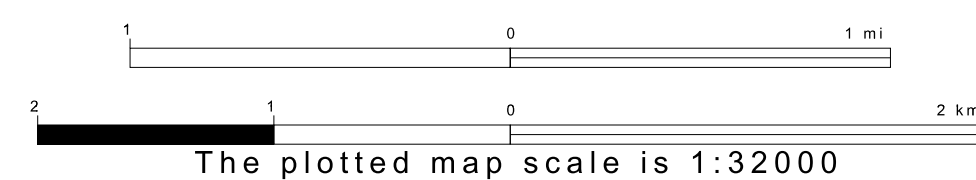
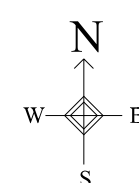
Voting Districts

Code	Name
3*	Grant Voting District
4*	Green Voting District
5*	Hughes Voting District
6*	Jackson Voting District
7*	Jefferson Voting District
8*	Madison Voting District
9*	Monroe Voting District
10*	Polk Voting District
11*	Polk&E Voting District
12*	Polk Voting District
13*	Polk&E Voting District
14*	Polk Voting District
15*	Polk&E Voting District
16*	Polk Voting District
17*	Union Voting District
18*	Union Voting District
20*	WhiteCloudNorth Voting District

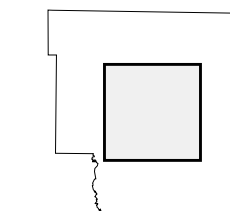


40 246188N
95.039182W

40 246188N
94.761729W



Sheet Location within County



Key to Adjacent Sheets

1	2	3
4	5	6
7	8	9

ST: Missouri (29)
 COU: Nodaway (147)
 SHEET 5 OF 9 PARENT SHEETS

