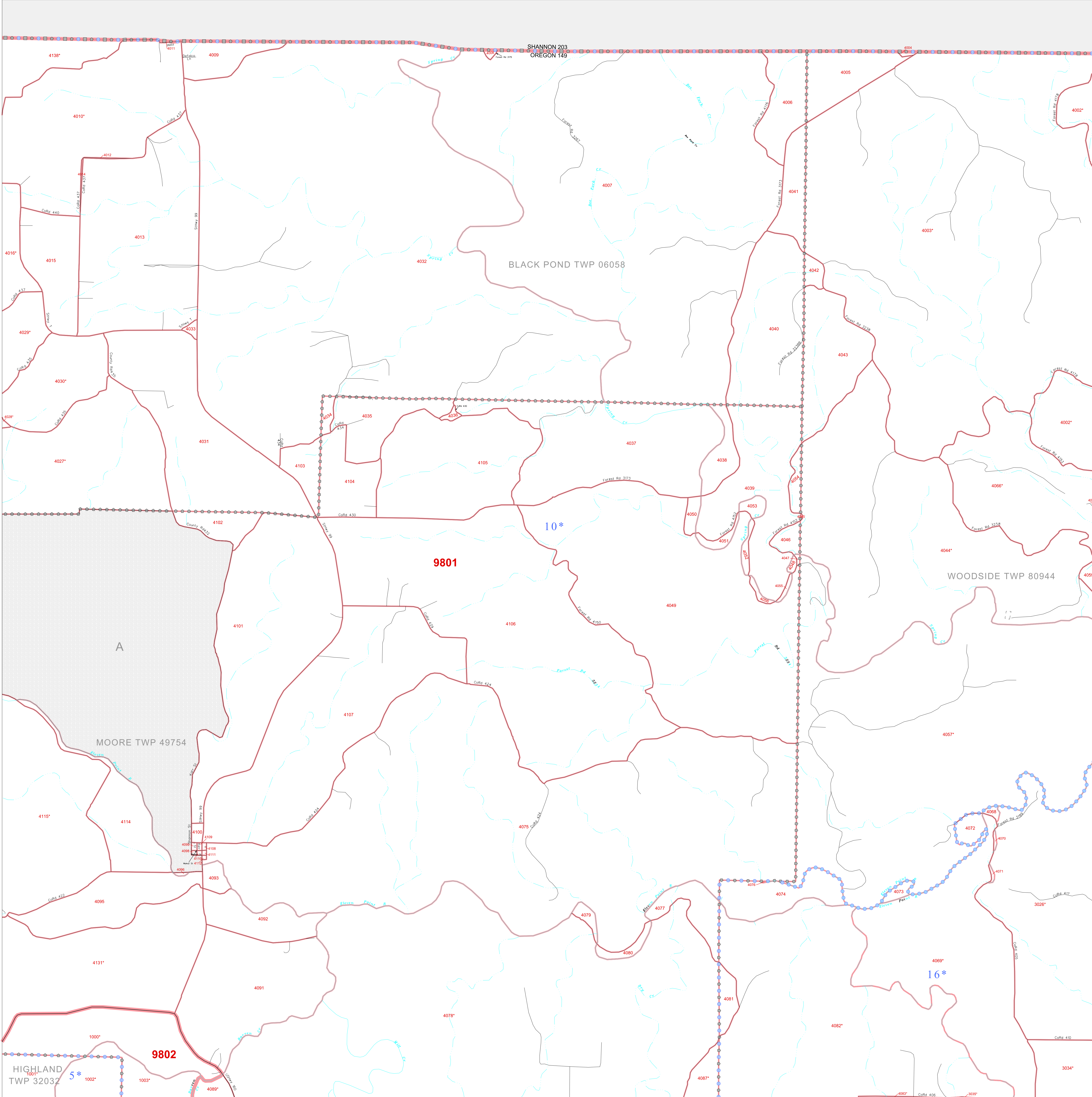


P. L. 94-171 COUNTY BLOCK MAP (CENSUS 2000)

36 892033N
91.581917W

36 892033N
91.581917W



GEOGRAPHIC AREAS LEGEND

SYMBOL	NAME STYLE
☆☆☆☆	INTERNATIONAL
////	STATE
□□□□	COUNTY
○ ○ ○ ○	MINOR CIVIL DIV. ¹
Yellow box	Incorporated Place ¹
Pink box	Census Designated Place ¹
Dashed line	Corporate Offset Boundary
Blue dashed line	Voting District ²
Red line	Census Tract
Red line	BLOCK ³
Blue dashed box	Military
Inset box	Inset
Out Area box	Out Area

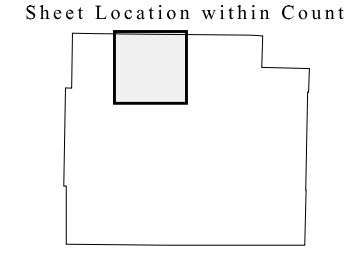
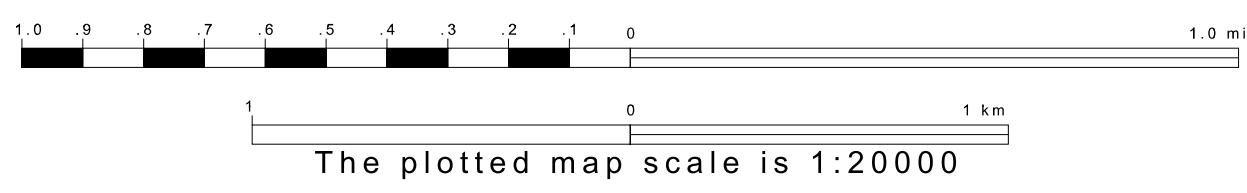
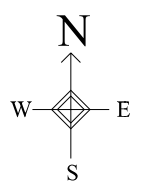
1 A "*" following a place name indicates that the place is coterminous with a MCD. A "-" indicates that the place is also a false MCD. In both cases, the MCD name is shown only when it differs from the place name.

2 A "*" following a VTD code indicates an actual voting district. Its absence indicates that the VTD is a pseudo voting district or no information is available as to its status.

3 A "*" following a block number indicates that the block number is repeated elsewhere in the block.

36 799276N
91.581917W

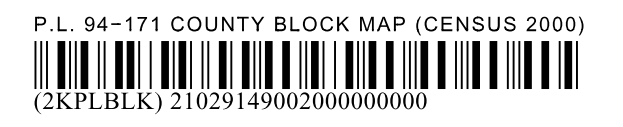
36 799276N
91.581917W



Key to Adjacent Sheets

1	2	3
5	6	7

ST: Missouri (29)
COU: Oregon (149)
SHEET 2 OF 12 PARENT SHEETS



All legal boundaries and names are as of January 1, 2000. The boundaries shown on this map are for Census Bureau statistical data collection and tabulation purposes only; their depiction and designation for statistical purposes does not constitute a determination of jurisdictional authority or rights of ownership or entitlement. U.S. DEPARTMENT OF COMMERCE Economics and Statistics Administration U.S. Census Bureau