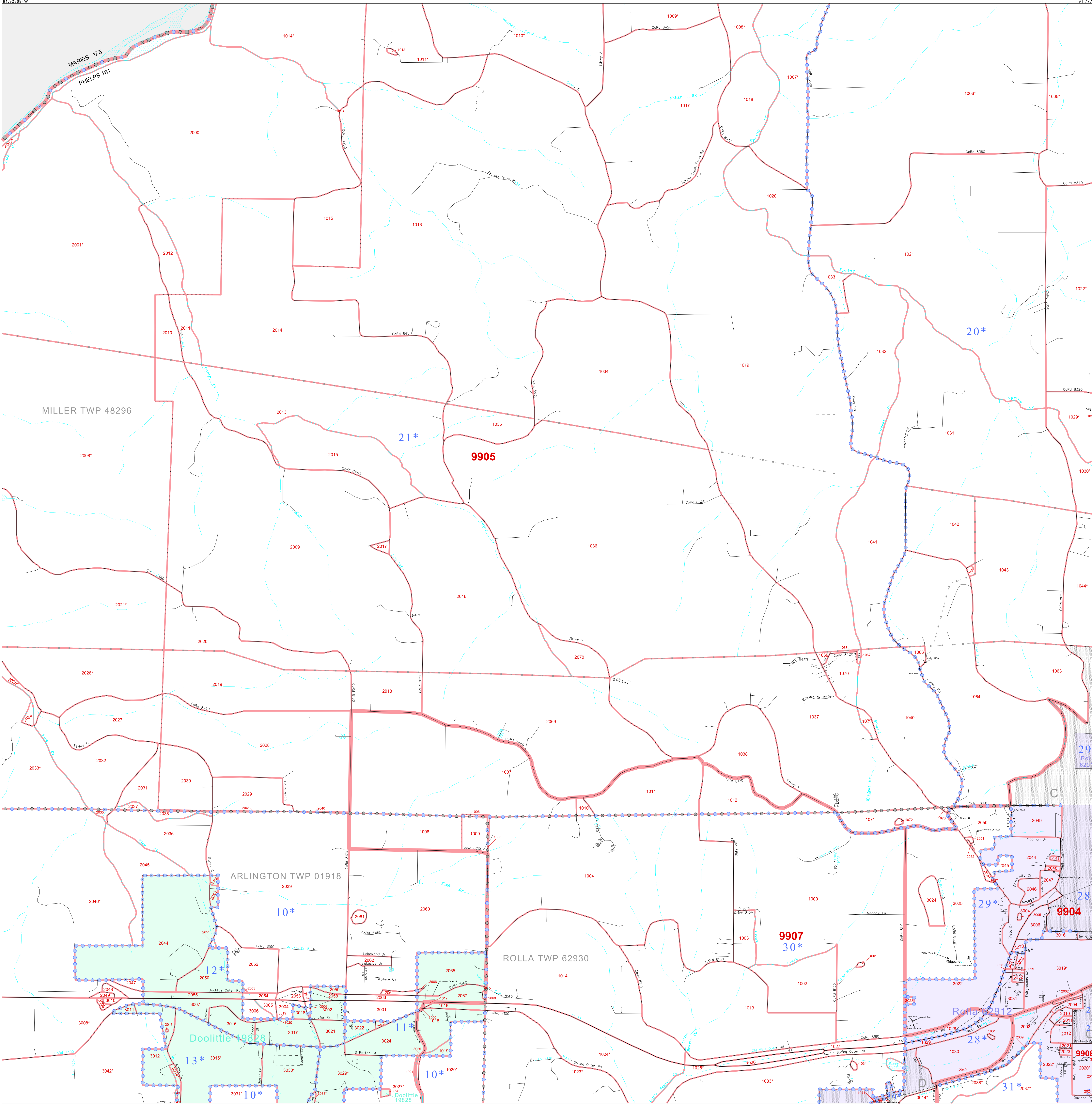


P. L. 94-171 COUNTY BLOCK MAP (CENSUS 2000)

38 050400N  
91 923694W

38 050400N  
91 923694W



**GEOGRAPHIC AREAS LEGEND**

| SYMBOL    | NAME STYLE                           |
|-----------|--------------------------------------|
| ☆☆☆☆☆     | INTERNATIONAL                        |
| -----     | STATE                                |
| =====     | COUNTY                               |
| ■ ■ ■ ■ ■ | MINOR CIVIL DIV. <sup>1</sup>        |
| ■ ■ ■ ■ ■ | Incorporated Place <sup>2</sup>      |
| ■ ■ ■ ■ ■ | Census Designated Place <sup>2</sup> |
| .....     | Corporate Offset Boundary            |
| ●●●●●     | Voting District <sup>3</sup>         |
| =====     | Census Tract <sup>3</sup>            |
| ■ ■ ■ ■ ■ | Military                             |
| Inset     | Out Area                             |

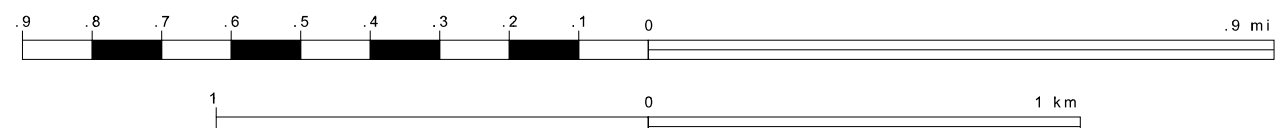
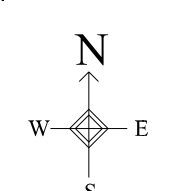
1 A "\*" following a place name indicates that the place is coterminous with a MCD. A "-" indicates that the place is also a false MCD. In both cases, the MCD name is shown only when it differs from the place name.

2 A "\*" following a VTD code indicates an actual voting district. Its absence indicates that the VTD is a pseudo voting district or no information is available as to its status.

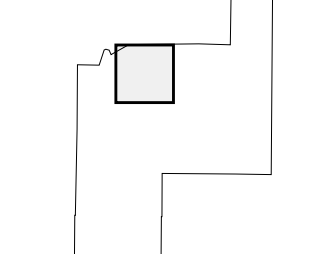
3 A "\*" following a block number indicates that the block number is repeated elsewhere in the block.

37 934260N  
91 923694W

37 934260N  
91 923694W



Sheet Location within County



Key to Adjacent Sheets

|   |   |
|---|---|
| 1 | 2 |
| 4 | 5 |
| 8 | 9 |

ST: Missouri (29)  
COU: Phelps (161)  
SHEET 5 OF 17 PARENT SHEETS



All legal boundaries and names are as of January 1, 2000. The boundaries shown on this map are for Census Bureau statistical data collection and tabulation purposes only; their depiction and designation for statistical purposes does not constitute a determination of jurisdictional authority or rights of ownership or entitlement. U.S. DEPARTMENT OF COMMERCE Economics and Statistics Administration U.S. Census Bureau