

P.L. 94-171 VOTING DISTRICT/STATE LEGISLATIVE DISTRICT OUTLINE MAP (CENSUS 2000)

37 756091N
93 486249W

37 756091N
93 319376W

FLEMINGTON
TWP 24598

6*

JEFFERSON TWP 36944

10*

MCKINLEY TWP 45164

20*

5*

CLIQUOT TWP 15058

28

145

NORTHEAST MARION TWP 53018

16*

17*

NORTHWEST MARION TWP 53366

Bolivar 06976

SOUTH GREEN TWP 68188

NORTH BENTON TWP 52804

37 623354N
93 219376W

GEOGRAPHIC AREAS LEGEND

SYMBOL	NAME STYLE
*****	INTERNATIONAL
//////	STATE
□□□□□□	COUNTY
○ ○ ○ ○ ○ ○	MINOR CIVIL DIV. ¹
■ ■ ■ ■ ■ ■	Incorporated Place ¹
■ ■ ■ ■ ■ ■	Census Designated Place ¹
■ ■ ■ ■ ■ ■	Voting District ²
● ● ● ● ● ●	SLD-Senate
▲ ▲ ▲ ▲ ▲ ▲	SLD-House
□ □ □ □ □ □	Minority
□ □ □ □ □ □	Inset
□ □ □ □ □ □	Out Area

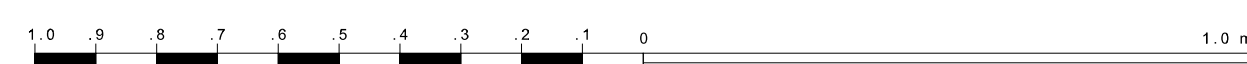
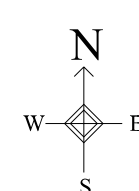
Abbreviation Reference: AIR - American Indian Reservation; SDAISA - State Designated American Indian Statistical Area

¹ A "*" following a place name indicates that the place is coterminous with a MCD. A "-" indicates that the place is also a MCD. In both cases, the MCD name is shown only when it differs from the place name.
² A "*" following a VTD code indicates an actual voting district. Its absence indicates that the VTD is a pseudo voting district or no information is available as to its status.

Voting Districts

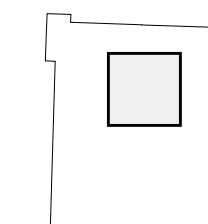
Code	Name
2*	BentonNorth Voting District
5*	Cliquot Voting District
6*	Flemington Voting District
8*	GreeneSouth Voting District
10*	Jefferson Voting District
16*	MarionNorthwest Voting District
17*	MarionNortheast Voting District
20*	Mckinley Voting District

37 623354N
93 486249W



The plotted map scale is 1:20000

Sheet Location within County



Key to Adjacent Sheets

1	2	3
4	5	6
7	8	9

ST: Missouri (29)
 COU: Polk (167)
 SHEET 5 OF 12 PARENT SHEETS

