

P.L. 94-171 VOTING DISTRICT/STATE LEGISLATIVE DISTRICT OUTLINE MAP (CENSUS 2000)

37 756091N  
93 319375W

37 756091N  
93 152500W

**GEOGRAPHIC AREAS LEGEND**

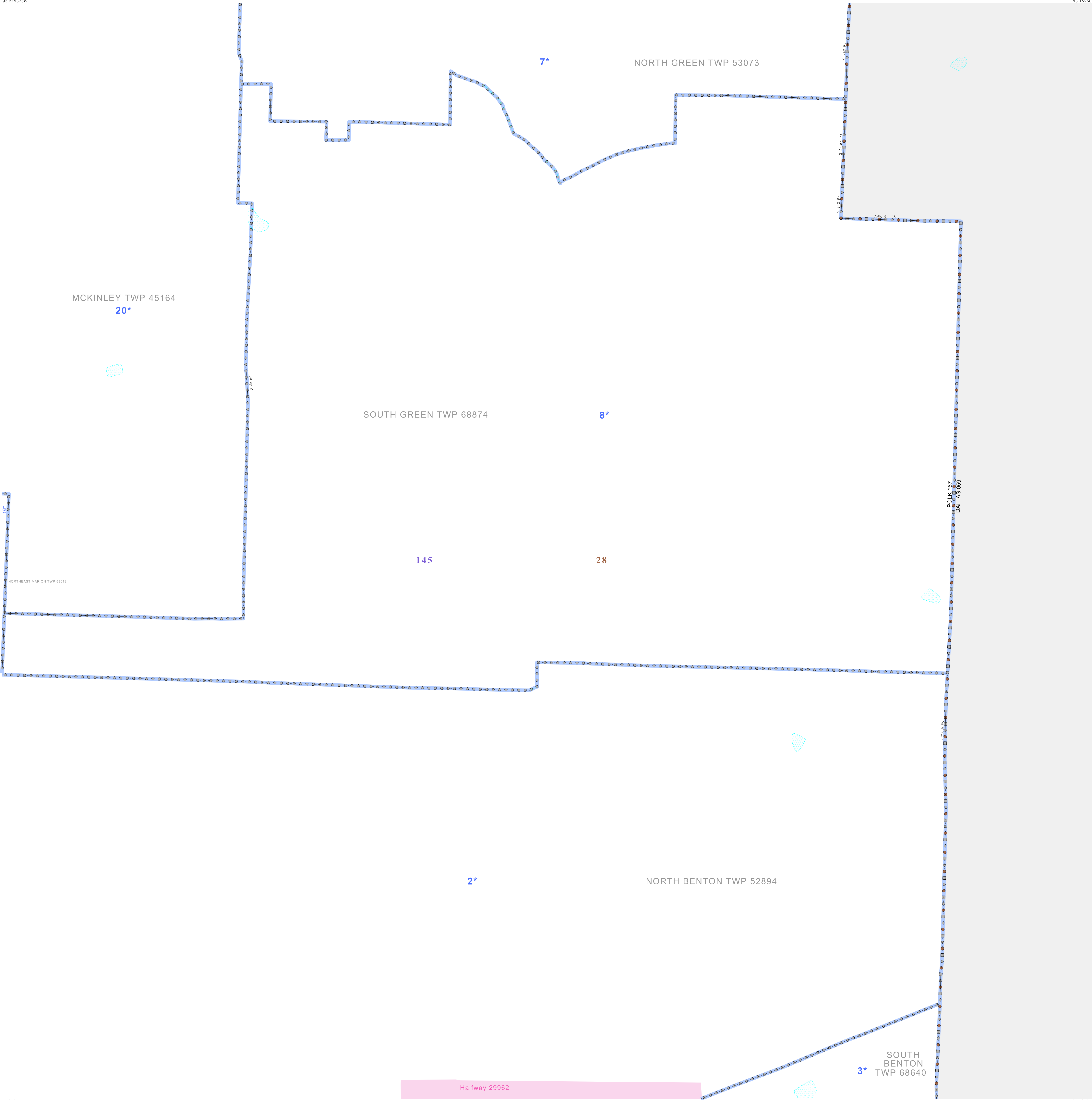
SYMBOL	NAME STYLE
*****	INTERNATIONAL
//////	STATE
□□□□	COUNTY
○○○○	MINOR CIVIL DIV. <sup>1</sup>
■	Incorporated Place <sup>1</sup>
■	Census Designated Place <sup>1</sup>
—	Voting District
●●●●	SLD-Senate
▲▲▲▲	SLD-House

Abbreviation Reference: AIR - American Indian Reservation; SDAISA - State Designated American Indian Statistical Area

<sup>1</sup> A "\*" following a place name indicates that the place is coextensive with a MCD. A "-" indicates that the place is also a false MCD. In both cases, the MCD name is shown only when it differs from the place name.  
<sup>2</sup> A "\*" following a VTD code indicates an actual voting district. Its absence indicates that the VTD is a pseudo voting district or no information is available as to its status.

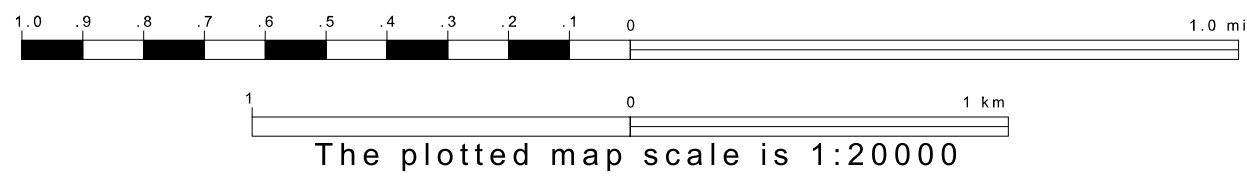
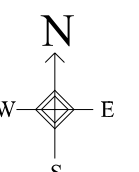
**Voting Districts**

Code	Name
1*	BentonNorth Voting District
2*	BentonSouth Voting District
3*	GreenNorth Voting District
4*	GreenSouth Voting District
5*	MarionNorthwest Voting District
6*	MarionSoutheast Voting District
7*	McKinley Voting District

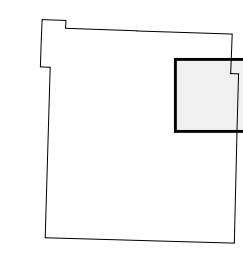


37 623354N  
93 319375W

37 623354N  
93 152500W



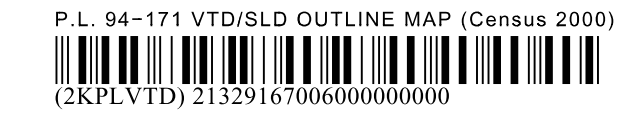
Sheet Location within County



Key to Adjacent Sheets

2	3
5	6
8	9

ST: Missouri (29)  
 COU: Polk (167)  
 SHEET 6 OF 12 PARENT SHEETS



All legal boundaries and names are as of January 1, 2000. The boundaries shown on this map are for Census Bureau statistical data collection and tabulation purposes only; their depiction and designation for statistical purposes does not constitute a determination of jurisdictional authority or rights of ownership or entitlement. U.S. DEPARTMENT OF COMMERCE Economics and Statistics Administration U.S. Census Bureau