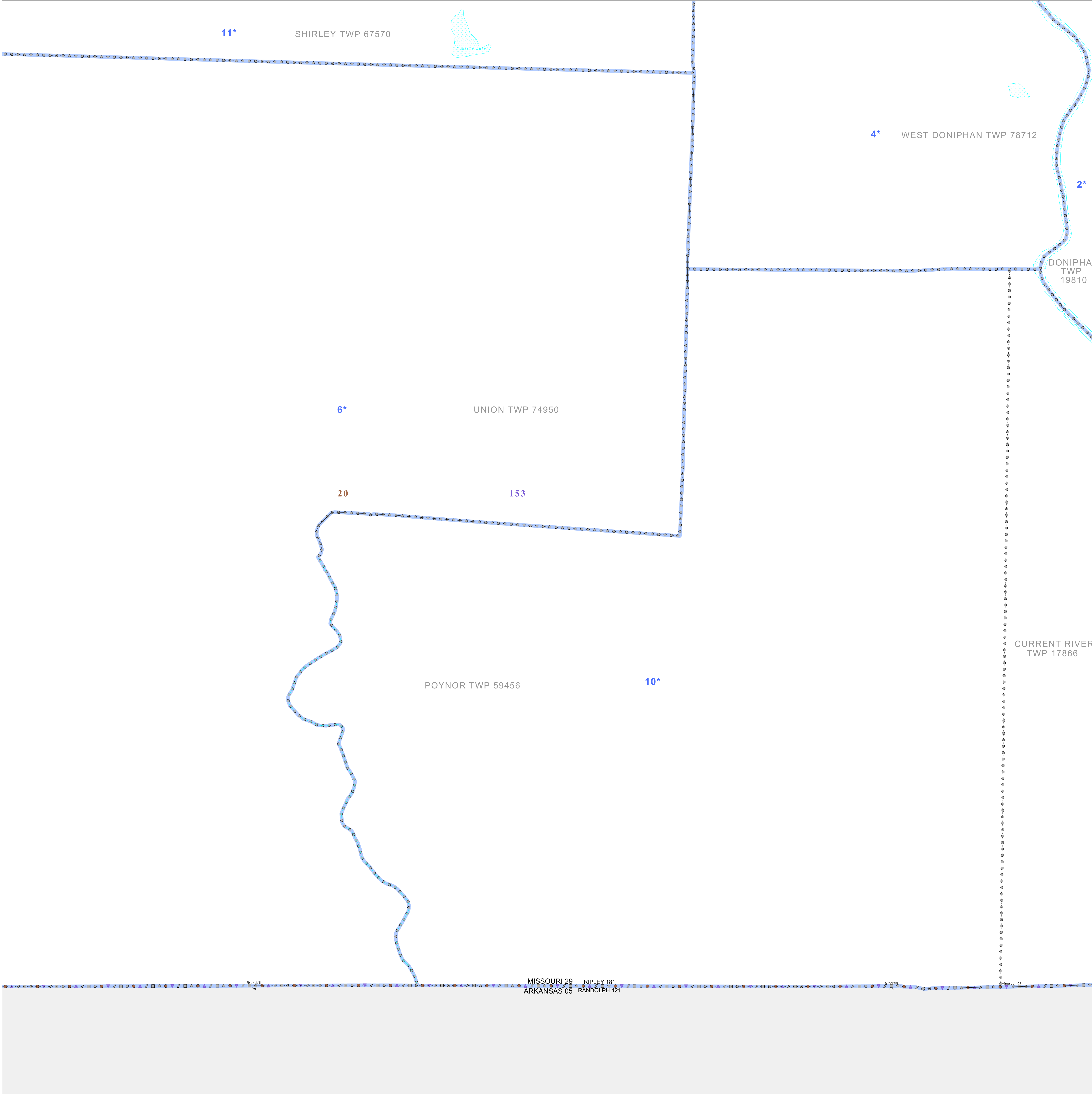


P.L. 94-171 VOTING DISTRICT/STATE LEGISLATIVE DISTRICT OUTLINE MAP (CENSUS 2000)

36 462929N
90 924981W

36 462929N
90 890784W



GEOGRAPHIC AREAS LEGEND

SYMBOL	NAME STYLE
*****	INTERNATIONAL
//////	STATE
□□□□□□	COUNTY
○ ○ ○ ○ ○ ○	MINOR CIVIL DIV. ¹
■ ■ ■ ■ ■ ■	Incorporated Place ¹
■ ■ ■ ■ ■ ■	Census Designated Place ²
—	Voting District
● ● ● ● ● ●	SLD-Senate
▲ ▲ ▲ ▲ ▲ ▲	SLD-House

Boundary Inset Out Area

Abbreviation Reference: AIR - American Indian Reservation; SDAISA - State Designated American Indian Statistical Area

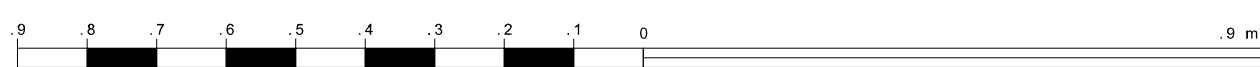
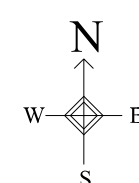
¹ A "*" following a place name indicates that the place is coterminous with a MCD. A "-" indicates that the place is also a MCD. In both cases, the MCD name is shown only when it differs from the place name.
² A "*" following a VTD code indicates an actual voting district. Its absence indicates that the VTD is a pseudo voting district or no information is available as to its status.

Voting Districts

Code	Name
2*	DoniphanE Voting District
4*	DoniphanWest Voting District
5*	DoniphanEast Voting District
10*	Payson&CurrentRiver Voting District
11*	Shirley&Kitty Voting District

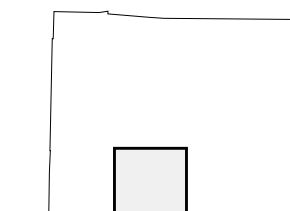
36 460765N
90 924981W

36 460765N
90 890784W



The plotted map scale is 1:17500

Sheet Location within County



Key to Adjacent Sheets

5	6	7
9	10	11

ST: Missouri (29)
 COU: Ripley (181)
 SHEET 10 OF 12 PARENT SHEETS

