

38 010764N
93 581763W

38 010764N
93 377201W

GEOGRAPHIC AREAS LEGEND

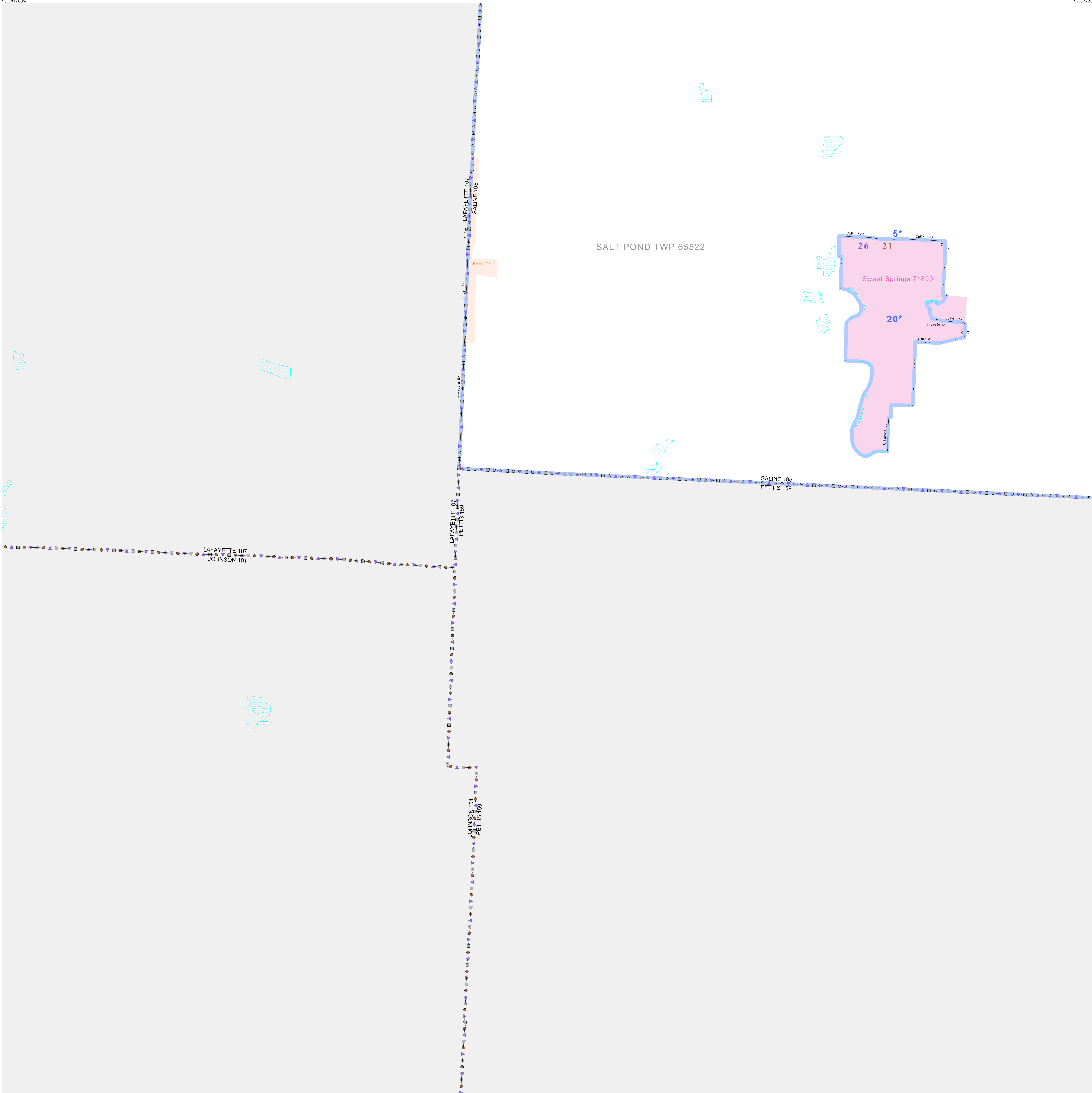
SYMBOL	NAME STYLE
*****	INTERNATIONAL
//////	STATE
□□□□□□	COUNTY
○●○●○●	MINOR CIVIL DIV. ¹
■ ■ ■ ■ ■ ■	Incorporated Place ¹
■ ■ ■ ■ ■ ■	Census Designated Place ²
—	Voting District
●●●●●●	SLD-Senate
▲▲▲▲▲▲	SLD-House
□□□□□□	Minority
□	Inset
□	Out Area

Abbreviation Reference: AIR - American Indian Reservation; SDAISA - State Designated American Indian Statistical Area

¹ A "*" following a place name indicates that the place is coterminous with a MCD. A "-" indicates that the place is also a false MCD. In both cases, the MCD name is shown only when it differs from the place name.
² A "*" following a VTD code indicates an actual voting district. Its absence indicates that the VTD is a pseudo voting district or no information is available as to its status.

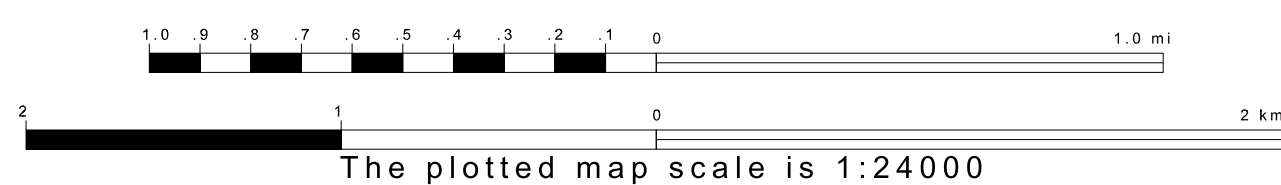
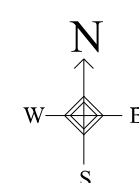
Voting Districts

Code	Name
5*	Emma Voting District
20*	SweetSprings Voting District

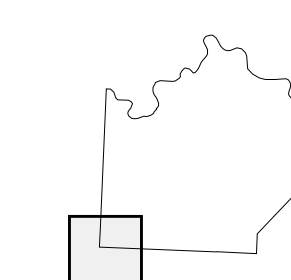


38 851543N
93 581763W

38 851543N
93 377201W



Sheet Location within County



Key to Adjacent Sheets

7	8
11	12

ST: Missouri (29)
 COU: Saline (195)
 SHEET 11 OF 13 PARENT SHEETS

