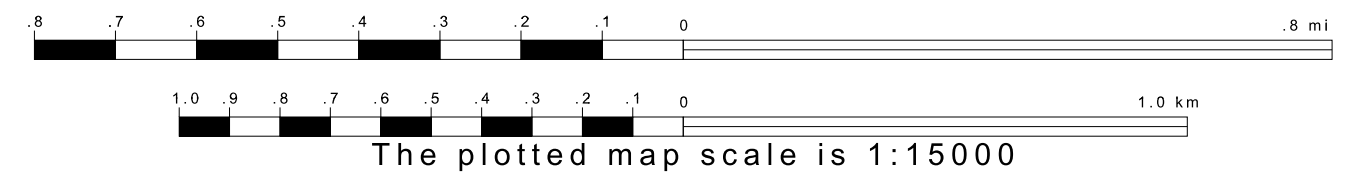
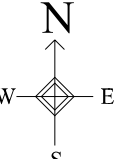
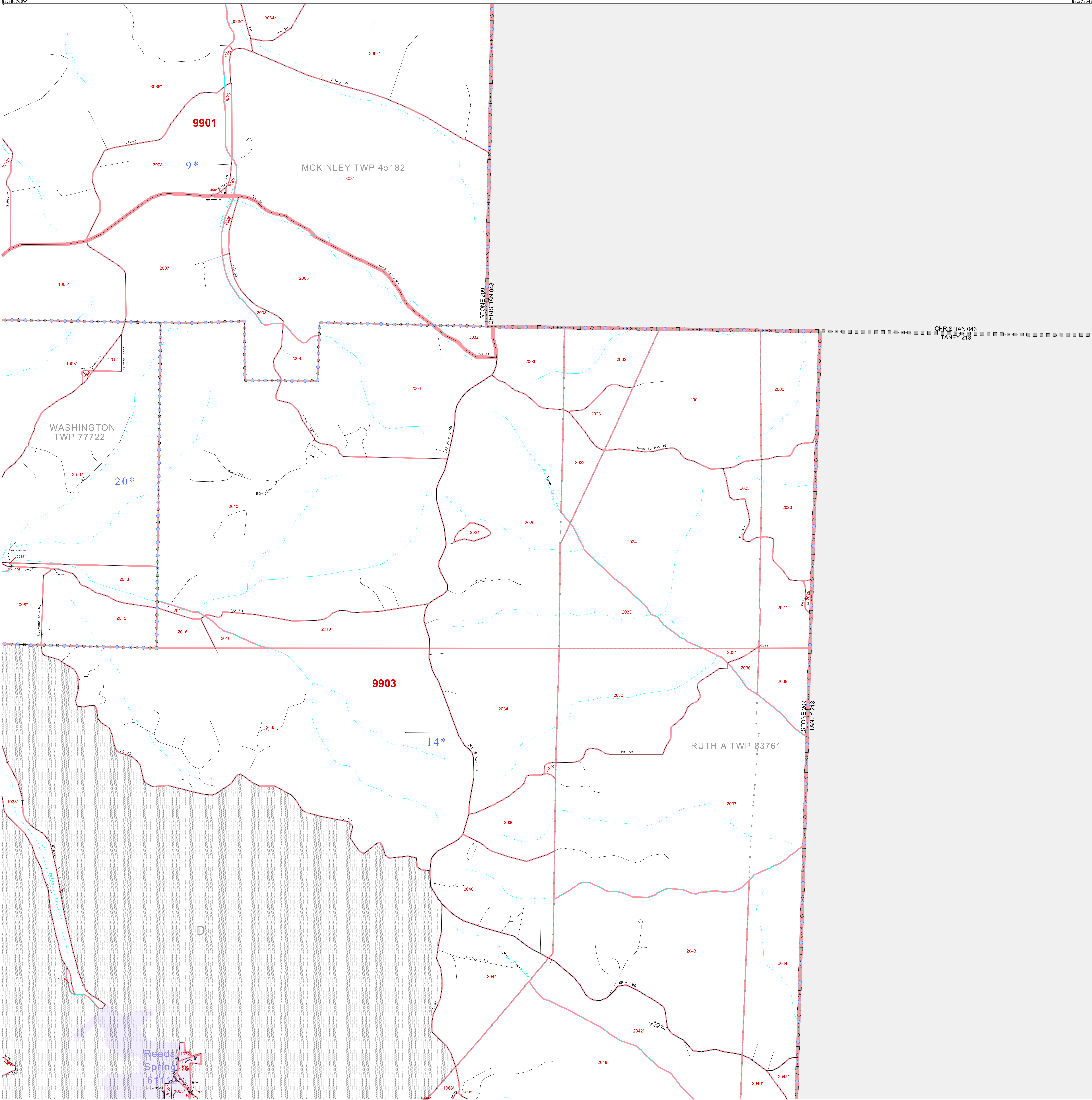


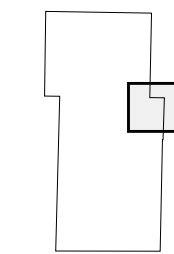
GEOGRAPHIC AREAS LEGEND

SYMBOL	NAME STYLE
☆☆☆☆☆	INTERNATIONAL
///////	STATE
■■■■■	COUNTY
□□□□□	MINOR CIVIL DIV ¹
■■■■■	Incorporated Place ²
■■■■■	Census Designated Place ²
.....	Corporate Offset Boundary
●●●●●	Voting District ³
■■■■■	Census Tract
■■■■■	BLOCK ³
■	Military
■	Inset
■	Out Area

1 A "*" following a place name indicates that the place is coterminous with a MCD. A "-" indicates that the place is also a false MCD. In both cases, the MCD name is shown only when it differs from the place name.
 2 A "*" following a VTD code indicates an actual voting district. Its absence indicates that the VTD is a pseudo voting district or no information is available as to its status.
 3 A "*" following a block number indicates that the block number is repeated elsewhere in the block.



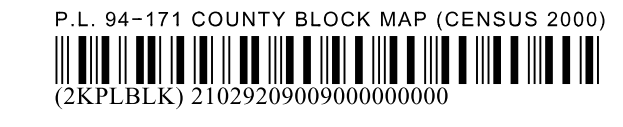
Sheet Location within County



Key to Adjacent Sheets

5	6
8	9
11	12

ST: Missouri (29)
 COU: Stone (209)
 SHEET 9 OF 18 PARENT SHEETS



All legal boundaries and names are as of January 1, 2000. The boundaries shown on this map are for Census Bureau statistical data collection and tabulation purposes only; their depiction and designation for statistical purposes does not constitute a determination of jurisdictional authority or rights of ownership or entitlement. U.S. DEPARTMENT OF COMMERCE Economics and Statistics Administration U.S. Census Bureau