

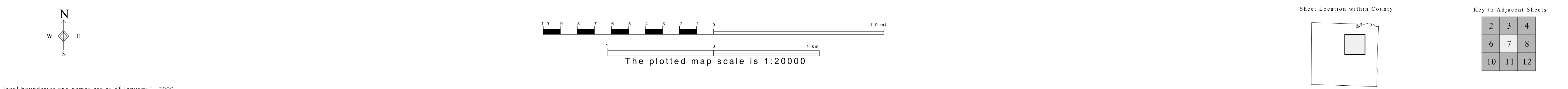
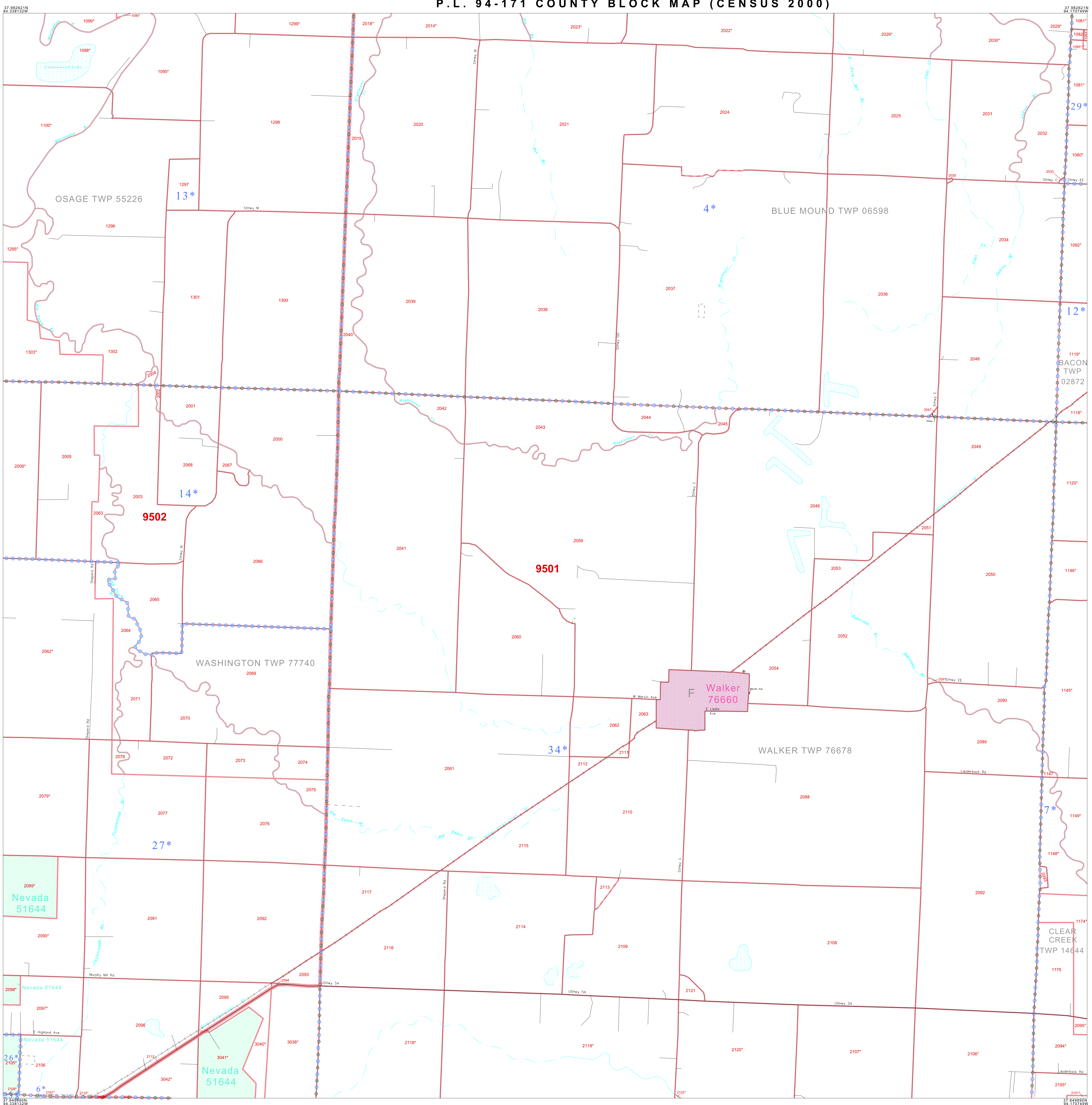
P. L. 94-171 COUNTY BLOCK MAP (CENSUS 2000)

GEOGRAPHIC AREAS LEGEND

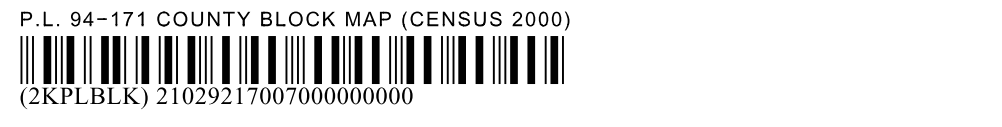
| SYMBOL | NAME STYLE |
|--------|--------------------------------------|
| ***** | INTERNATIONAL |
| ////// | STATE |
| ■■■■■ | COUNTY |
| ■■■■■ | MINOR CIVIL DIV. ¹ |
| ■■■■■ | Incorporated Place ² |
| ■■■■■ | Census Designated Place ² |
| ----- | Corporate Offset Boundary |
| ●●●●● | Voting District ³ |
| ■■■■■ | Census Tract |
| ■■■■■ | BLOCK ³ |

Military Inset Out Area

¹ A "*" following a place name indicates that the place is coterminous with a MCD. A "-" indicates that the place is also a false MCD. In both cases, the MCD name is shown only when it differs from the place name.
² A "*" following a VTD code indicates an actual voting district. Its absence indicates that the VTD is a pseudo voting district or no information is available as to its status.
³ A "*" following a block number indicates that the block number is repeated elsewhere in the block.



ST: Missouri (29)
 COU: Vernon (217)
 SHEET 7 OF 16 PARENT SHEETS



All legal boundaries and names are as of January 1, 2000. The boundaries shown on this map are for Census Bureau statistical data collection and tabulation purposes only; their depiction and designation for statistical purposes does not constitute a determination of jurisdictional authority or rights of ownership or entitlement. U.S. DEPARTMENT OF COMMERCE Economics and Statistics Administration U.S. Census Bureau