

P. L. 94-171 COUNTY BLOCK MAP (CENSUS 2000)

37 849900N
94.872900W

37 849900N
94.805516W

37.717159N
94.872900W

37.717159N
94.805516W

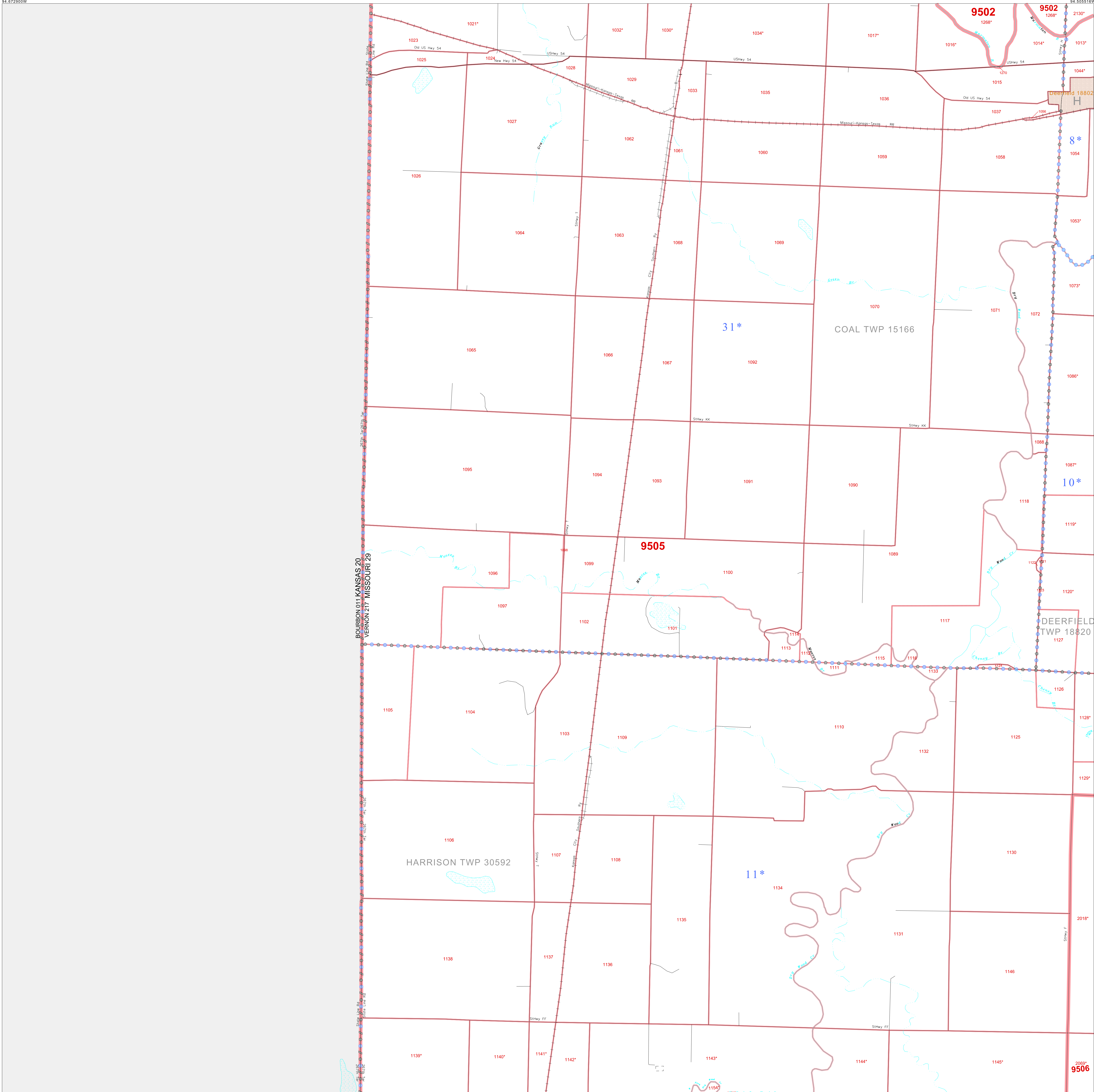
GEOGRAPHIC AREAS LEGEND

SYMBOL	NAME STYLE
☆☆☆☆☆	INTERNATIONAL
///////	STATE
□□□□□	COUNTY
□□□□□	MINOR CIVIL DIV. ¹
■	Incorporated Place ²
■	Census Designated Place ²
-----	Corporate Offset Boundary
●●●●●	Voting District ³
—	Census Tract
—	BLOCK ³

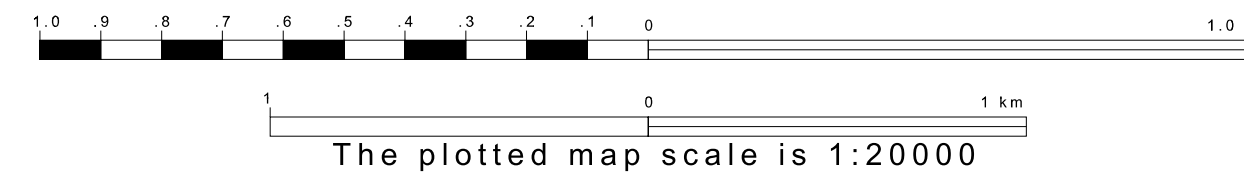
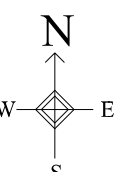
1 A "*" following a place name indicates that the place is coterminous with a MCD. A "-" indicates that the place is also a false MCD. In both cases, the MCD name is shown only when it differs from the place name.

2 A "*" following a VTD code indicates an actual voting district. Its absence indicates that the VTD is a pseudo voting district or no information is available as to its status.

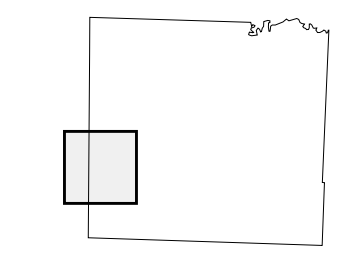
3 A "*" following a block number indicates that the block number is repeated elsewhere in the block.



BOURBON 0111 KANSAS 20
VERNON 217 MISSOURI 29



Sheet Location within County



Key to Adjacent Sheets

5	6
9	10
13	14

ST: Missouri (29)
COU: Vernon (217)
SHEET 9 OF 16 PARENT SHEETS

All legal boundaries and names are as of January 1, 2000. The boundaries shown on this map are for Census Bureau statistical data collection and tabulation purposes only; their depiction and designation for statistical purposes does not constitute a determination of jurisdictional authority or rights of ownership or entitlement. U.S. DEPARTMENT OF COMMERCE Economics and Statistics Administration U.S. Census Bureau

