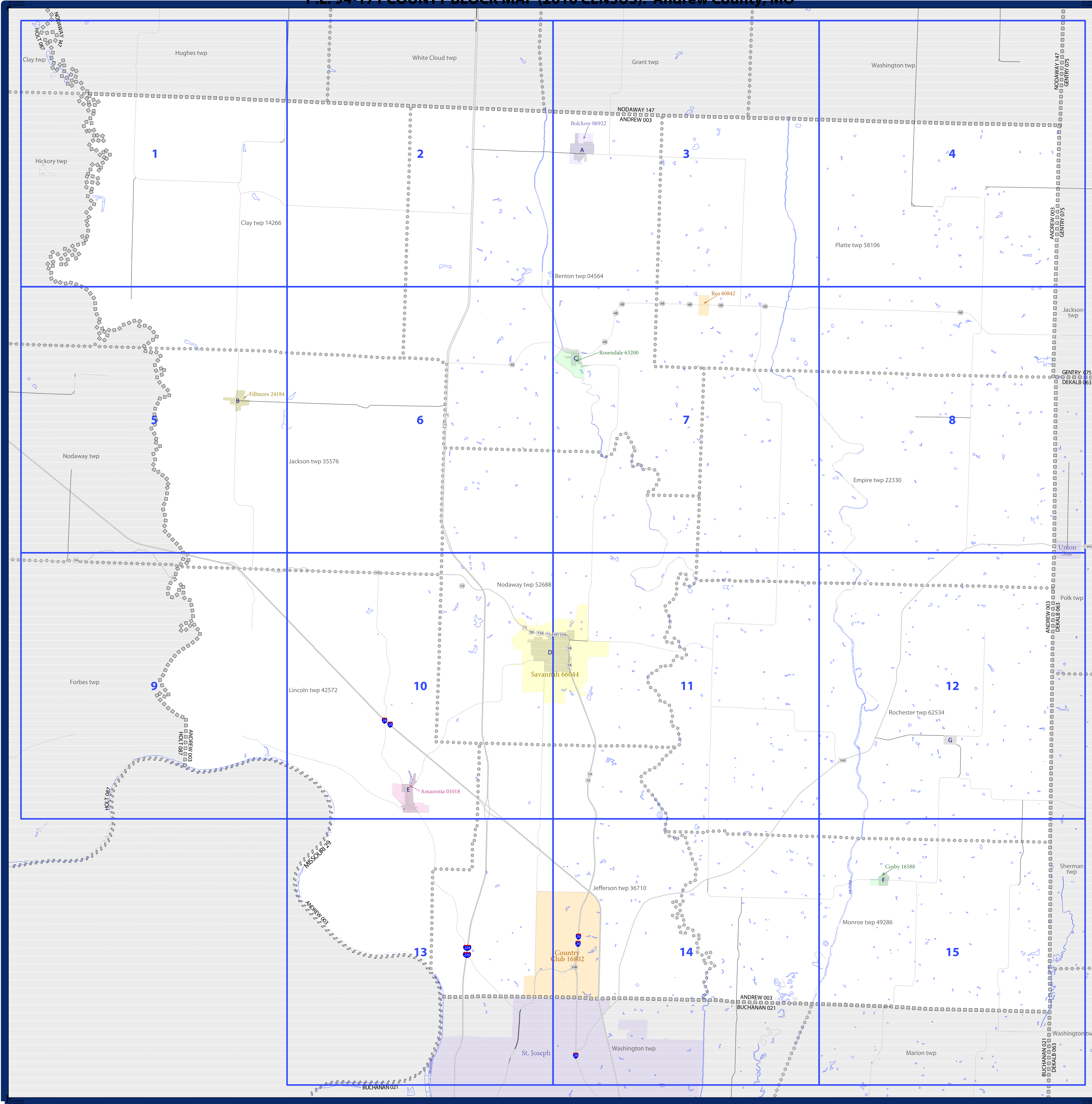


# P.L. 94-171 COUNTY BLOCK MAP (2010 CENSUS): Andrew County, MO



LEGEND		
SYMBOL DESCRIPTION	SYMBOL	LABEL STYLE
Federal American Indian Reservation	*****	L'ANSE RES 1880
Off-Reservation Trust Land, Hawaiian Home Land	+++++	T1880
Oklahoma Tribal Statistical Area, Alaska Native Village Statistical Area, Tribal Designated Statistical Area	◆◆◆◆◆	KAW OTSA 5340
American Indian Tribal Subdivision	●●●●●	EAGLE NEST DIST 200
State American Indian Reservation	//////	Tama Res 4125
State Designated Tribal Statistical Area	◆◆◆◆◆	Lumbee STSA 9815
Alaska Native Regional Corporation	▼▼▼▼▼	NANA ANRC 52120
State (or statistically equivalent entity)		NEW YORK 36
County (or statistically equivalent entity)	□□□□□	ERIE 029
Minor Civil Division (MCD) <sup>1</sup>	○ ○ ○ ○ ○	Bristol town 07485
Census County Division (CCD), Census Subarea (CSA), Unorganized Territory (UT)	○ ○ ○ ○ ○	Jemez CCD 91650
Consolidated City	○ ○ ○ ○ ○	MILFORD 47500
Incorporated Place <sup>1,2</sup>	■ ■ ■ ■ ■	Davis 18100
Census Designated Place (CDP) <sup>2</sup>	■ ■ ■ ■ ■	Incline Village 35100
Voting District (VTD)	● ● ● ● ●	100015
State Legislative District - Upper (Senate)	■ ■ ■ ■ ■	SLDU 14
State Legislative District - Lower (House)	■ ■ ■ ■ ■	SLDL 26
Census Tract	■ ■ ■ ■ ■	33.07
Census Block <sup>3</sup>	■ ■ ■ ■ ■	3012

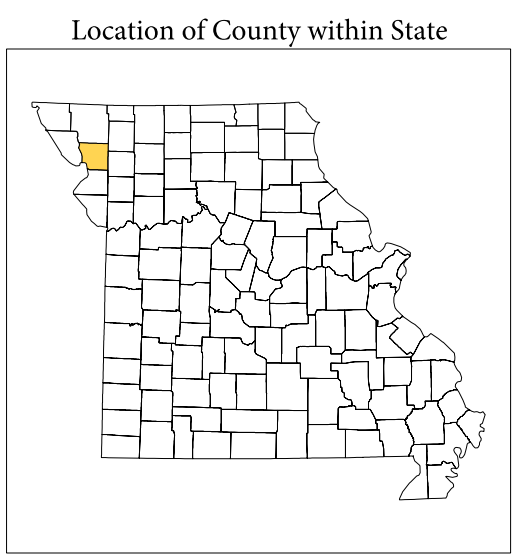
DESCRIPTION	SYMBOL	DESCRIPTION	SYMBOL
Interstate	— 4—	Geographic Offset or Corridor	—
U.S. Highway	— 2—	Water Body	—
State Highway	— 1—	Swamp, Marsh, or Gravel Pit/Quarry	—
Other Road	—	Marsh Lot	—
Cul-de-sac	—	Glacier	—
Circle	—	Military	—
AWD Trail, Stairway, Alley, Walkway, or Ferry	—	National or State Park, Forest, or Recreation Area	—
Railroad	—	Airport	—
Pipeline or Power Line	—	Selected Mountain Peaks	—
Ridge or Fence	—	Inset Area	—
Property Line	—	Outside Subject Area	—
Perennial Stream	—		
Intermittent Stream	—		
Nonvisible Boundary or Feature Not Elsewhere Classified	—		

Where state, county, and/or MCD/CCD boundaries coincide, the map shows the boundary symbol for only the highest-ranking of these boundaries. Where American Indian reservation and American Indian tribal subdivision boundaries coincide, the map shows only the American Indian reservation boundaries. Where Oklahoma tribal statistical area boundaries and American Indian tribal subdivision boundaries coincide, the map shows only the Oklahoma tribal statistical area boundaries.

1 A " " following an MCD name denotes a false MCD. A " " following a place name indicates that a false MCD exists with the same name and FIPS code as the place; the false MCD label is not shown.

2 Place label color correlates to the place fill color.

3 A " " following a block number indicates that the block number is repeated elsewhere in the block.

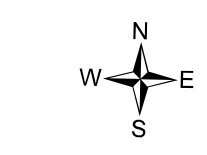
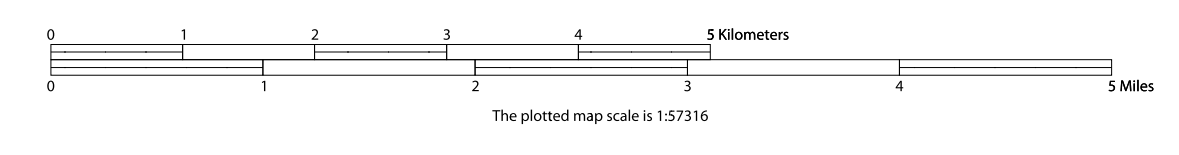


All legal boundaries and names are as of January 1, 2010. The boundaries shown on this map are for Census Bureau statistical data collection and tabulation purposes only; their depiction and designation for statistical purposes does not constitute a determination of jurisdictional authority or rights of ownership or entitlement.

Geographic Vintage: 2010 Census (reference date: January 1, 2010)  
 Data Source: U.S. Census Bureau's MAINTIGR database (TAB100229)  
 Map Created by Geography Division: November 16, 2010

U.S. DEPARTMENT OF COMMERCE Economics and Statistics Administration U.S. Census Bureau

Projection: Albers Equal Area Conic  
 Datum: NAD 83  
 Spheroid: GRS 80  
 1st Standard Parallel: 36 45 55  
 2nd Standard Parallel: 39 50 38  
 Central Meridian: -92 51 50  
 Latitude of Projection's Origin: 35 59 44  
 False Easting: 0  
 False Northing: 0

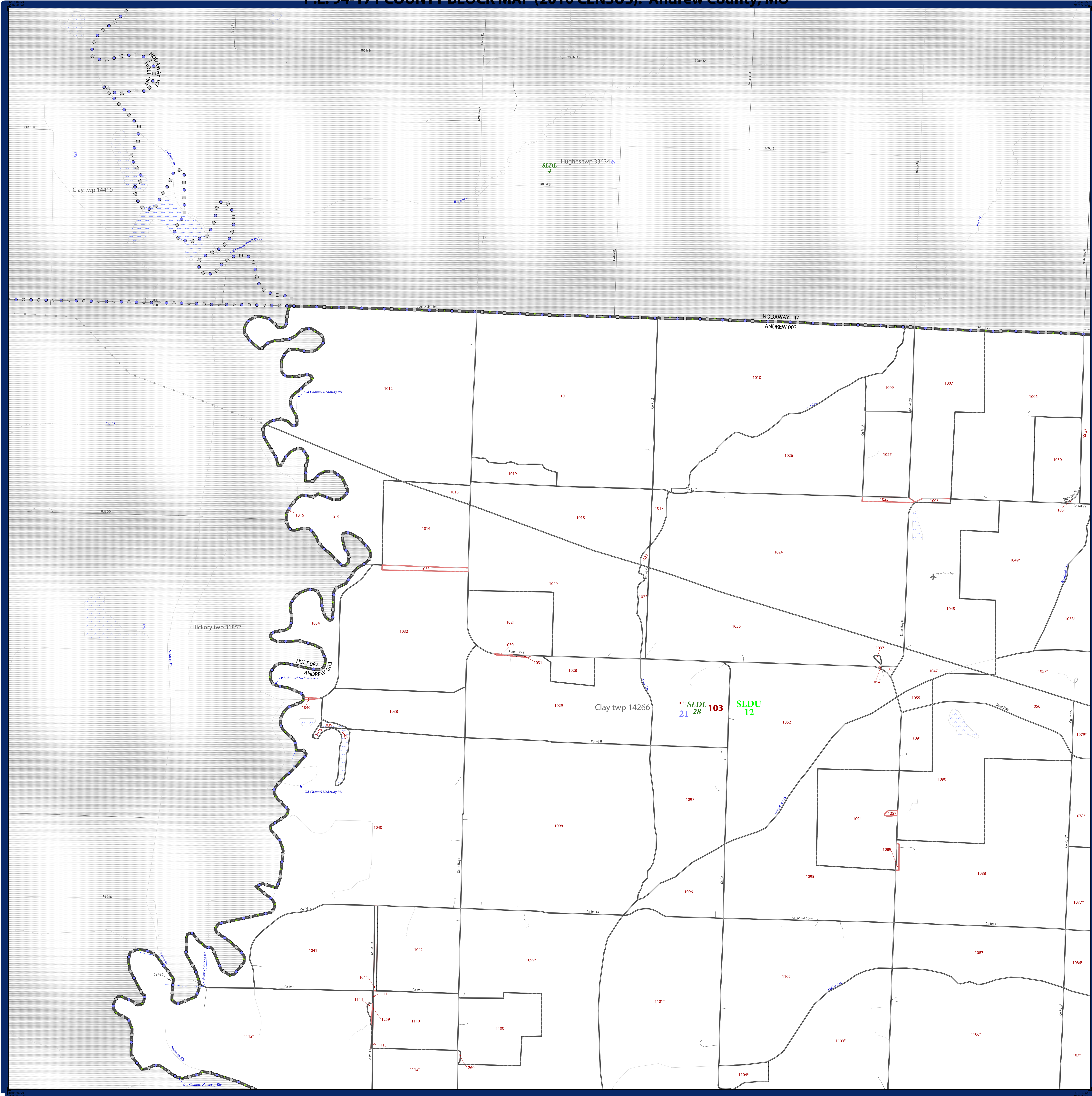


USCENSUSBUREAU

INDEX SHEET  
 Total Sheets: 23  
 Index Sheets: 1  
 Parent Sheets: 15  
 Inset Sheets: 7

NAME: Andrew County (003)  
 ENTITY TYPE: County or statistically equivalent entity  
 ST: Missouri (29)

P.L. 94-171 COUNTY BLOCK MAP (2010 CENSUS): Andrew County, MO



LEGEND	
SYMBOL DESCRIPTION	LABEL STYLE
Federal American Indian Reservation	***** L'ANSE RES 1880
Off-Reservation Trust Land, Hawaiian Home Land	+ + + + + T1880
Oklahoma Tribal Statistical Area, Alaska Native Village Statistical Area, Tribal Designated Statistical Area	◆◆◆◆◆ KAW OTSA 5340
American Indian Tribal Subdivision	●●●●● EAGLE NEST DIST 200
State American Indian Reservation	////// Tama Res 4125
State Designated Tribal Statistical Area	◆◆◆◆◆ Lumbee STSA 9815
Alaska Native Regional Corporation	▼▼▼▼▼ NANA ANRC 52120
State (or statistically equivalent entity)	NEW YORK 36
County (or statistically equivalent entity)	□□□□□ ERIE 029
Minor Civil Division (MCD) <sup>1</sup>	○ ○ ○ ○ ○ Bristol town 07485
Census County Division (CCD), Census Subarea (CSA), Unorganized Territory (UT)	○ ○ ○ ○ ○ Jemez CCD 91650
Consolidated City	○ ○ ○ ○ ○ MILFORD 47500
Incorporated Place <sup>1,2</sup>	■ ■ ■ ■ ■ Davis 18100
Census Designated Place (CDP) <sup>2</sup>	■ ■ ■ ■ ■ Incline Village 35100
Voting District (VTD)	● ● ● ● ● 100015
State Legislative District - Upper (Senate)	■ ■ ■ ■ ■ SLDU 14
State Legislative District - Lower (House)	■ ■ ■ ■ ■ SLDL 26
Census Tract	■ ■ ■ ■ ■ 33.07
Census Block <sup>3</sup>	■ ■ ■ ■ ■ 3012

Where state, county, and/or MCD/CCD boundaries coincide, the map shows the boundary symbol for only the highest-ranking of these boundaries. Where American Indian reservation and American Indian tribal subdivision boundaries coincide, the map shows only the American Indian reservation boundaries. Where Oklahoma tribal statistical area boundaries and American Indian tribal subdivision boundaries coincide, the map shows only the Oklahoma tribal statistical area boundaries.

1 A "\*" following an MCD name denotes a false MCD. A "\*" following a place name indicates that a false MCD exists with the same name and FIPS code as the place; the false MCD label is not shown.

2 Place label color correlates to the place fill color.

3 A "\*" following a block number indicates that the block number is repeated elsewhere in the block.

DESCRIPTION	SYMBOL	DESCRIPTION	SYMBOL
Interstate	— 4—	Geographic Offset or Corridor	—
U.S. Highway	— 2—	Water Body	—
State Highway	— 1—	Swamp, Marsh, or Gravel Pit/Quarry	—
Other Road	—	Marsh Ln	—
Cul-de-sac	—	Glacier	—
Circle	—	Military	—
4WD Trail, Stairway, Alley, Walkway, or Ferry	—	National or State Park, Forest, or Recreation Area	—
Railroad	—	Airport	—
Pipeline or Power Line	—	Selected Mountain Peaks	—
Ridge or Fence	—	Inset Area	—
Property Line	—	Outside Subject Area	—
Perennial Stream	—		
Intermittent Stream	—		
Nonvisible Boundary or Feature Not Elsewhere Classified	—		

All legal boundaries and names are as of January 1, 2010. The boundaries shown on this map are for Census Bureau statistical data collection and tabulation purposes only; their depiction and designation for statistical purposes does not constitute a determination of jurisdictional authority or rights of ownership or entitlement.

Geographic Vintage: 2010 Census (reference date: January 1, 2010)  
 Data Source: U.S. Census Bureau's MAINTIGER database (TAB100229)  
 Map Created by Geography Division: November 16, 2010

U.S. DEPARTMENT OF COMMERCE Economics and Statistics Administration U.S. Census Bureau

Projection: Albers Equal Area Conic  
 Datum: NAD 83  
 Spheroid: GRS 80  
 1st Standard Parallel: 36 45 55  
 2nd Standard Parallel: 39 50 38  
 Central Meridian: -92 51 50  
 Latitude of Projection's Origin: 35 59 44  
 False Easting: 0  
 False Northing: 0

The plotted map scale is 1:80000

Key to Sheets

1	2
5	6

PARENT SHEET 1  
 Total Sheets: 23  
 Index Sheets: 1  
 Parent Sheets: 15  
 Inset Sheets: 7

NAME: Andrew County (003)  
 ENTITY TYPE: County or statistically equivalent entity  
 ST: Missouri (29)

Location of County within State

Sheet Location within Entity

2010 PL BLOCK MAP (PARENT) 2010000001







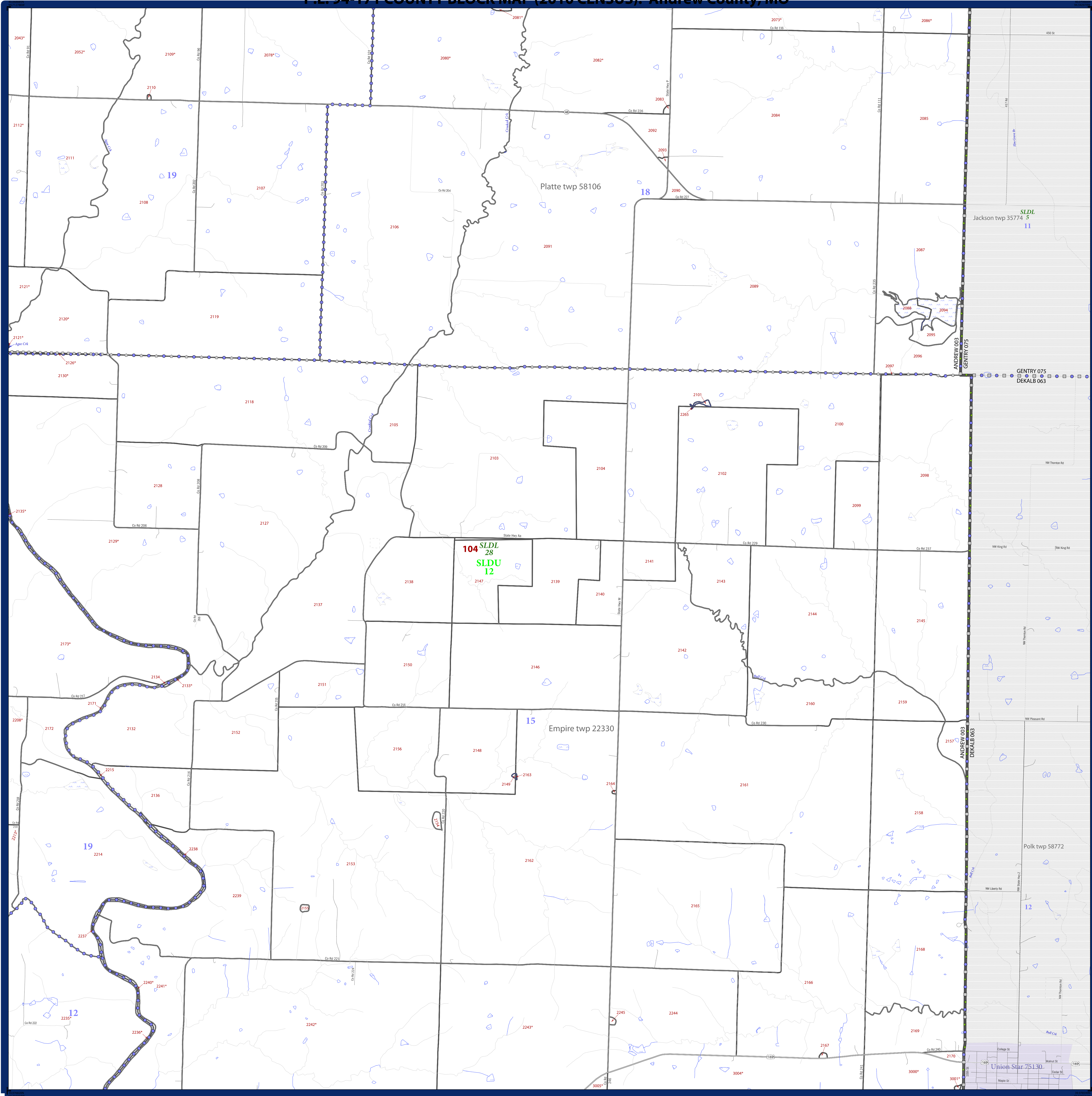








# P.L. 94-171 COUNTY BLOCK MAP (2010 CENSUS): Andrew County, MO



LEGEND	
SYMBOL DESCRIPTION	SYMBOL
Federal American Indian Reservation	*****
Off-Reservation Trust Land, Hawaiian Home Land	+++++
Oklahoma Tribal Statistical Area, Alaska Native Village Statistical Area, Tribal Designated Statistical Area	◆◆◆◆◆
American Indian Tribal Subdivision	●●●●●
State American Indian Reservation	//////
State Designated Tribal Statistical Area	◆◆◆◆◆
Alaska Native Regional Corporation	▼▼▼▼▼
State (or statistically equivalent entity)	
County (or statistically equivalent entity)	□□□□□
Minor Civil Division (MCD) <sup>1</sup>	○ ○ ○ ○ ○
Census County Division (CCD), Census Subarea (CSA), Unincorporated Territory (UT)	○ ○ ○ ○ ○
Consolidated City	○ ○ ○ ○ ○
Incorporated Place <sup>1,2</sup>	■ ■ ■ ■ ■
Census Designated Place (CDP) <sup>2</sup>	■ ■ ■ ■ ■
Voting District (VTD)	● ● ● ● ●
State Legislative District - Upper (Senate)	■ ■ ■ ■ ■
State Legislative District - Lower (House)	▼ ▼ ▼ ▼ ▼
Census Tract	— — — — —
Census Block <sup>3</sup>	— — — — —

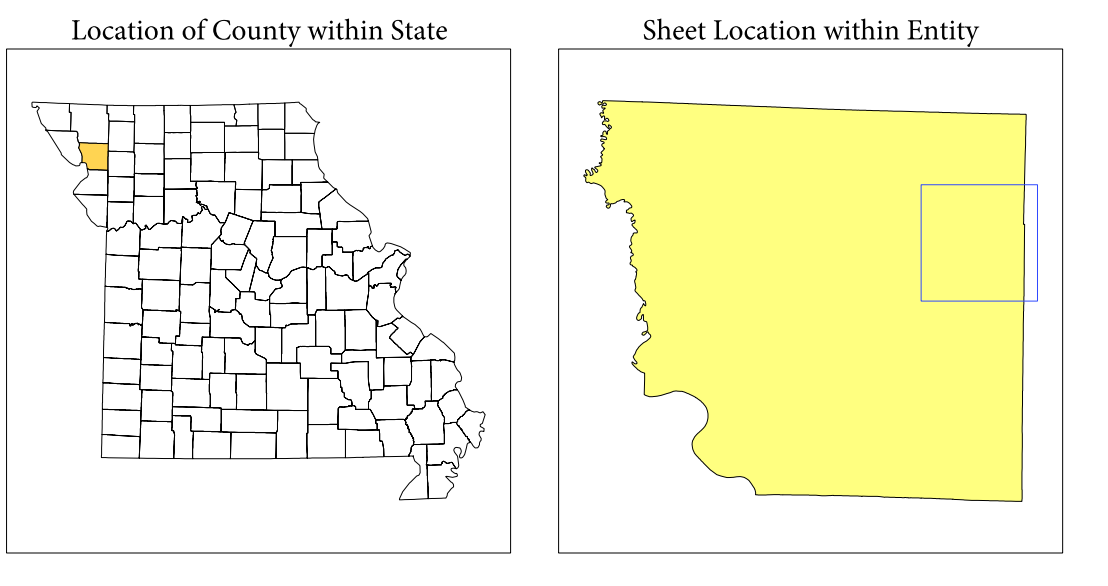
DESCRIPTION	SYMBOL	DESCRIPTION	SYMBOL
Interstate	— 1 —	Geographic Offset or Corridor	— — — — —
U.S. Highway	— 2 —	Water Body	— (Blue) —
State Highway	— 3 —	Swamp, Marsh, or Gravel Pit/Quarry	— (Green) —
Other Road	— 4 —	Marsh Ln	— (Blue) —
Cul-de-sac	— 5 —	Glacier	— (Blue) —
Circle	— 6 —	Military	— (Blue) —
4WD Trail, Stairway, Alley, Walkway, or Ferry	— 7 —	National or State Park, Forest, or Recreation Area	— (Green) —
Railroad	— 8 —	Airport	— (Blue) —
Pipeline or Power Line	— 9 —	Selected Mountain Peaks	— (Blue) —
Ridge or Fence	— 10 —	Inset Area	— (Blue) —
Property Line	— 11 —	Outside Subject Area	— (Blue) —
Perennial Stream	— (Blue) —		
Intermittent Stream	— (Blue) —		
Nonvisible Boundary or Feature Not Elsewhere Classified	— (Blue) —		

Where state, county, and/or MCD/CCD boundaries coincide, the map shows the boundary symbol for only the highest-ranking of these boundaries. Where American Indian reservation and American Indian tribal subdivision boundaries coincide, the map shows only the American Indian reservation boundaries. Where Oklahoma tribal statistical area boundaries and American Indian tribal subdivision boundaries coincide, the map shows only the Oklahoma tribal statistical area boundaries.

1 A " " following an MCD name denotes a false MCD. A " " following a place name indicates that a false MCD exists with the same name and FIPS code as the place; the false MCD label is not shown.

2 Place label color correlates to the place fill color.

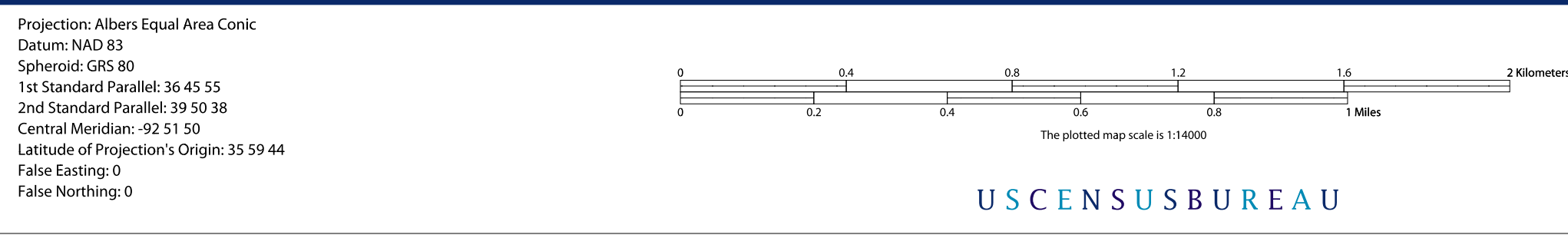
3 A " " following a block number indicates that the block number is repeated elsewhere in the block.



All legal boundaries and names are as of January 1, 2010. The boundaries shown on this map are for Census Bureau statistical data collection and tabulation purposes only; their depiction and designation for statistical purposes does not constitute a determination of jurisdictional authority or rights of ownership or entitlement.

Geographic Vintage: 2010 Census (reference date: January 1, 2010)  
 Data Source: U.S. Census Bureau's MAINTIGR database (TAB1101223)  
 Map Created by Geography Division: November 16, 2010

U.S. DEPARTMENT OF COMMERCE Economics and Statistics Administration U.S. Census Bureau



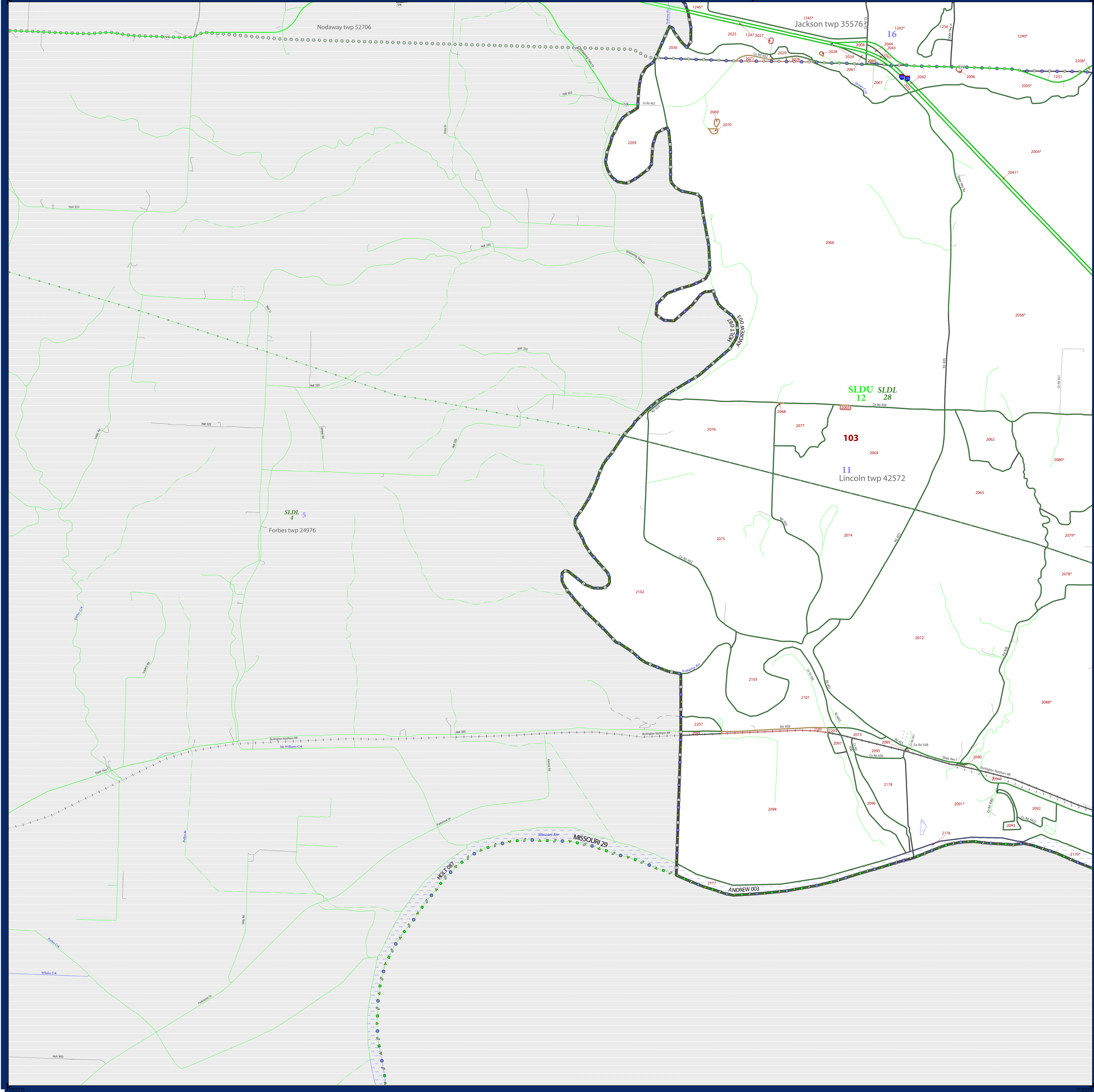
Key to Sheets			
3	4	7	8
11	12		

PARENT SHEET 8  
 Total Sheets: 23  
 Index Sheets: 1  
 Parent Sheets: 15  
 Inset Sheets: 7

NAME: Andrew County (003)  
 ENTITY TYPE: County or statistically equivalent entity  
 ST: Missouri (29)

2010 PL BLOCK MAP (PARENT)  
 201000008

# P.L. 94-171 COUNTY BLOCK MAP (2010 CENSUS): Andrew County, MO



### LEGEND

SYMBOL DESCRIPTION	SYMBOL	LABEL STYLE
Federal American Indian Reservation	*****	L'ANSE RES 1880
Off-Reservation Trust Land, Hawaiian Home Land	+++++	T1880
Oklahoma Tribal Statistical Area, Alaska Native Village Statistical Area, Tribal Designated Statistical Area	◆◆◆◆◆	KAW OTSA 5340
American Indian Tribal Subdivision	●●●●●	EAGLE NEST DIST 200
State American Indian Reservation	//////	Tama Res 4125
State Designated Tribal Statistical Area	◆◆◆◆◆	Lumbee STSA 9815
Alaska Native Regional Corporation	▼▼▼▼▼	NANA ANRC 52120
State (or statistically equivalent entity)		NEW YORK 36
County (or statistically equivalent entity)	□□□□□	ERIE 029
Minor Civil Division (MCD) <sup>1</sup>	○ ○ ○ ○ ○	Bristol town 07485
Census County Division (CCD), Census Subarea (CSA), Unorganized Territory (UT)	○ ○ ○ ○ ○	Jemez CCD 91650
Consolidated City	○ ○ ○ ○ ○	MILFORD 47500
Incorporated Place <sup>1,2</sup>	■ ■ ■ ■ ■	Davis 18100
Census Designated Place (CDP) <sup>2</sup>	■ ■ ■ ■ ■	Incline Village 35100
Voting District (VTD)	● ● ● ● ●	100015
State Legislative District - Upper (Senate)	■ ■ ■ ■ ■	SLDU 14
State Legislative District - Lower (House)	▼ ▼ ▼ ▼ ▼	SLDL 26
Census Tract	— — — — —	33.07
Census Block <sup>3</sup>	— — — — —	3012

DESCRIPTION	SYMBOL	DESCRIPTION	SYMBOL
Interstate	— 1 —	Geographic Offset or Corridor	— — — — —
U.S. Highway	— 2 —	Water Body	— ~ ~ ~ —
State Highway	— 3 —	Swamp, Marsh, or Gravel Pit/Quarry	— ~ ~ ~ ~ ~
Other Road	— 4 —	Marsh Ln	— ~ ~ ~ ~ ~
Cul-de-sac	— 5 —	Glacier	— ~ ~ ~ ~ ~
Circle	— 6 —	Military	— ~ ~ ~ ~ ~
AWT Trail, Stairway, Alley, Walkway, or Ferry	— 7 —	National or State Park, Forest, or Recreation Area	— ~ ~ ~ ~ ~
Railroad	— 8 —	Airport	— ~ ~ ~ ~ ~
Pipeline or Power Line	— 9 —	Selected Mountain Peaks	— ~ ~ ~ ~ ~
Ridge or Fence	— 10 —	Inset Area	— ~ ~ ~ ~ ~
Property Line	— 11 —	Outside Subject Area	— ~ ~ ~ ~ ~
Perennial Stream	— 12 —		
Intermittent Stream	— 13 —		

Where state, county, and/or MCD/CCD boundaries coincide, the map shows the boundary symbol for only the highest-ranking of these boundaries. Where American Indian reservation and American Indian tribal subdivision boundaries coincide, the map shows only the American Indian reservation boundaries. Where Oklahoma tribal statistical area boundaries and American Indian tribal subdivision boundaries coincide, the map shows only the Oklahoma tribal statistical area boundaries.

1 A " " following an MCD name denotes a false MCD. A " " following a place name indicates that a false MCD exists with the same name and FIPS code as the place; the false MCD label is not shown.

2 Place label color correlates to the place fill color.

3 A " " following a block number indicates that the block number is repeated elsewhere in the block.

All legal boundaries and names are as of January 1, 2010. The boundaries shown on this map are for Census Bureau statistical data collection and tabulation purposes only; their depiction and designation for statistical purposes does not constitute a determination of jurisdictional authority or rights of ownership or entitlement.

Geographic Vintage: 2010 Census (reference date: January 1, 2010)  
 Data Source: U.S. Census Bureau's MAINTIGER database (TAB100229)  
 Map Created by Geography Division: November 16, 2010

U.S. DEPARTMENT OF COMMERCE Economics and Statistics Administration U.S. Census Bureau

Projection: Albers Equal Area Conic  
 Datum: NAD 83  
 Spheroid: GRS 80  
 1st Standard Parallel: 36 45 55  
 2nd Standard Parallel: 39 50 38  
 Central Meridian: -92 51 50  
 Latitude of Projection's Origin: 35 59 44  
 False Easting: 0  
 False Northing: 0

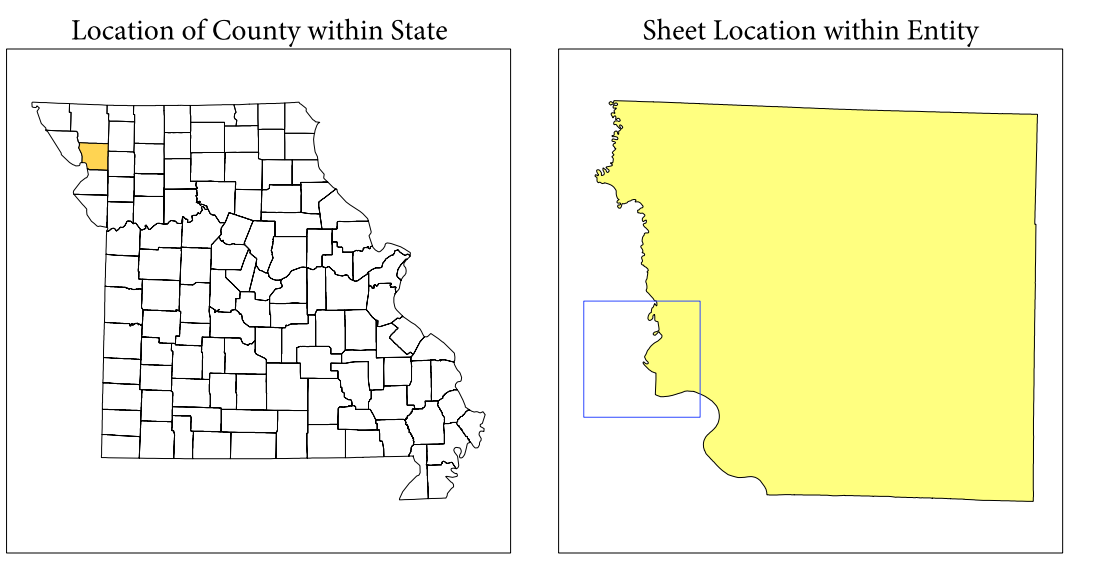
The plotted map scale is 1:180,000

0 0.4 0.8 1.2 1.6 2 Kilometers  
 0 0.2 0.4 0.6 0.8 1 Miles

Key to Sheets

5	6
9	10
	13

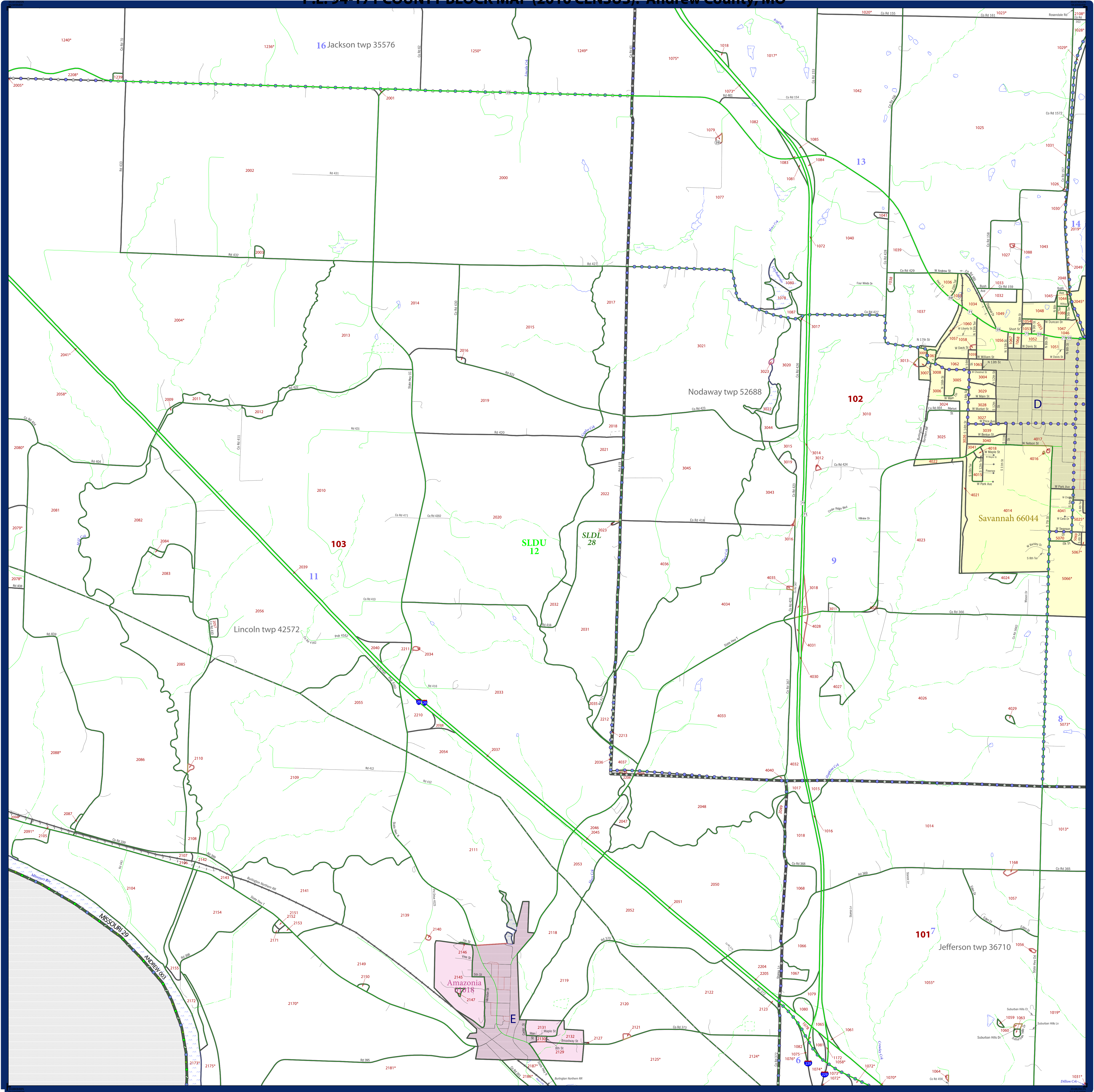
PARENT SHEET 9  
 Total Sheets: 23  
 Index Sheets: 1  
 Parent Sheets: 15  
 Inset Sheets: 7



NAME: Andrew County (003)  
 ENTITY TYPE: County or statistically equivalent entity  
 ST: Missouri (29)

2010 PL BLOCK MAP (PARENT)  
 2010000009

P.L. 94-171 COUNTY BLOCK MAP (2010 CENSUS): Andrew County, MO



SYMBOL DESCRIPTION		LEGEND	
*****	Federal American Indian Reservation	*****	L'ANSE RES 1880
++++++	Off-Reservation Trust Land, Hawaiian Home Land	++++++	T1880
●●●●●●	Oklahoma Tribal Statistical Area, Alaska Native Village Statistical Area, Tribal Designated Statistical Area	●●●●●●	KAW OTSA 5340
●●●●●●	American Indian Tribal Subdivision	●●●●●●	EAGLE NEST DIST 200
//////	State American Indian Reservation	//////	Tama Res 4125
◆◆◆◆◆◆	State Designated Tribal Statistical Area	◆◆◆◆◆◆	Lumbee STSA 9815
▼▼▼▼▼▼	Alaska Native Regional Corporation	▼▼▼▼▼▼	NANA ANRC 52120
	State (or statistically equivalent entity)		NEW YORK 36
□□□□□□	County (or statistically equivalent entity)	□□□□□□	ERIE 029
○●○●○●○●	Minor Civil Division (MCD) <sup>1</sup>	○●○●○●○●	Bristol town 07485
○●○●○●○●	Census County Division (CCD), Census Subarea (CSA), Unincorporated Territory (UT)	○●○●○●○●	Jemez CCD 91650
○●○●○●○●	Consolidated City	○●○●○●○●	MILFORD 47500
■	Incorporated Place <sup>1,2</sup>	■	Davis 18100
■	Census Designated Place (CDP) <sup>2</sup>	■	Incline Village 35100
●●●●●●	Voting District (VTD)	●●●●●●	100015
●●●●●●	State Legislative District - Upper (Senate)	●●●●●●	SLDU 14
●●●●●●	State Legislative District - Lower (House)	●●●●●●	SLDL 26
■	Census Tract	■	33.07
■	Census Block <sup>3</sup>	■	3012

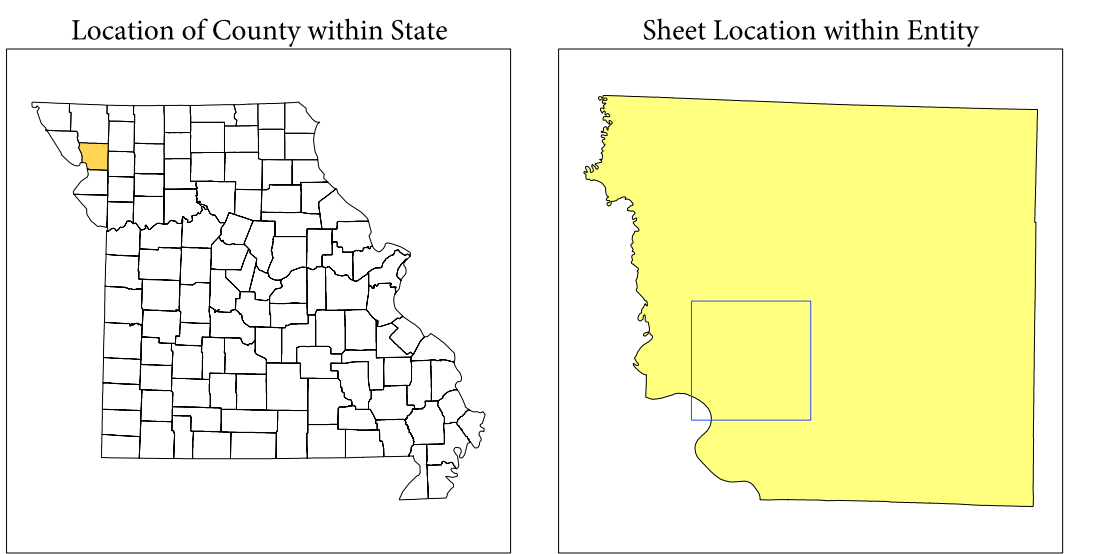
DESCRIPTION	SYMBOL	DESCRIPTION	SYMBOL
Interstate	—	Geographic Offset or Corridor	—
U.S. Highway	—	Water Body	—
State Highway	—	Swamp, Marsh, or Gravel Pit/Quarry	—
Other Road	—	Marsh Ln	—
Cul-de-sac	—	Glacier	—
Circle	—	Military	—
AWT <sup>1</sup> Trail, Stairway, Alley, Walkway, or Ferry	—	National or State Park, Forest, or Recreation Area	—
Railroad	—	Airport	—
Pipeline or Power Line	—	Selected Mountain Peaks	—
Ridge or Fence	—	Inset Area	—
Property Line	—	Nonvisible Boundary or Feature Not Elsewhere Classified	—
Perennial Stream	—		
Intermittent Stream	—		

Where state, county, and/or MCD/CCD boundaries coincide, the map shows the boundary symbol for only the highest-ranking of these boundaries. Where American Indian reservation and American Indian tribal subdivision boundaries coincide, the map shows only the American Indian reservation boundaries. Where Oklahoma tribal statistical area boundaries and American Indian tribal subdivision boundaries coincide, the map shows only the Oklahoma tribal statistical area boundaries.

1. A " " following an MCD name denotes a false MCD. A " " following a place name indicates that a false MCD exists with the same name and FIPS code as the place; the false MCD label is not shown.

2. Place label color correlates to the place fill color.

3. A " " following a block number indicates that the block number is repeated elsewhere in the block.



All legal boundaries and names are as of January 1, 2010. The boundaries shown on this map are for Census Bureau statistical data collection and tabulation purposes only; their depiction and designation for statistical purposes does not constitute a determination of jurisdictional authority or rights of ownership or entitlement.

Geographic: Vintage: 2010 Census (reference date: January 1, 2010)  
 Data Source: U.S. Census Bureau's MA7/TIGER database (TAB100229)  
 Map Created by Geography Division: November 16, 2010

U.S. DEPARTMENT OF COMMERCE Economics and Statistics Administration U.S. Census Bureau

Projection: Albers Equal Area Conic  
 Datum: NAD83  
 Spheroid: GRS 80  
 1st Standard Parallel: 36 45 55  
 2nd Standard Parallel: 39 50 38  
 Central Meridian: -92 51 50  
 Latitude of Projection's Origin: 35 59 44  
 False Easting: 0  
 False Northing: 0

Key to Sheets

5	6	7
9	10	11
13	14	

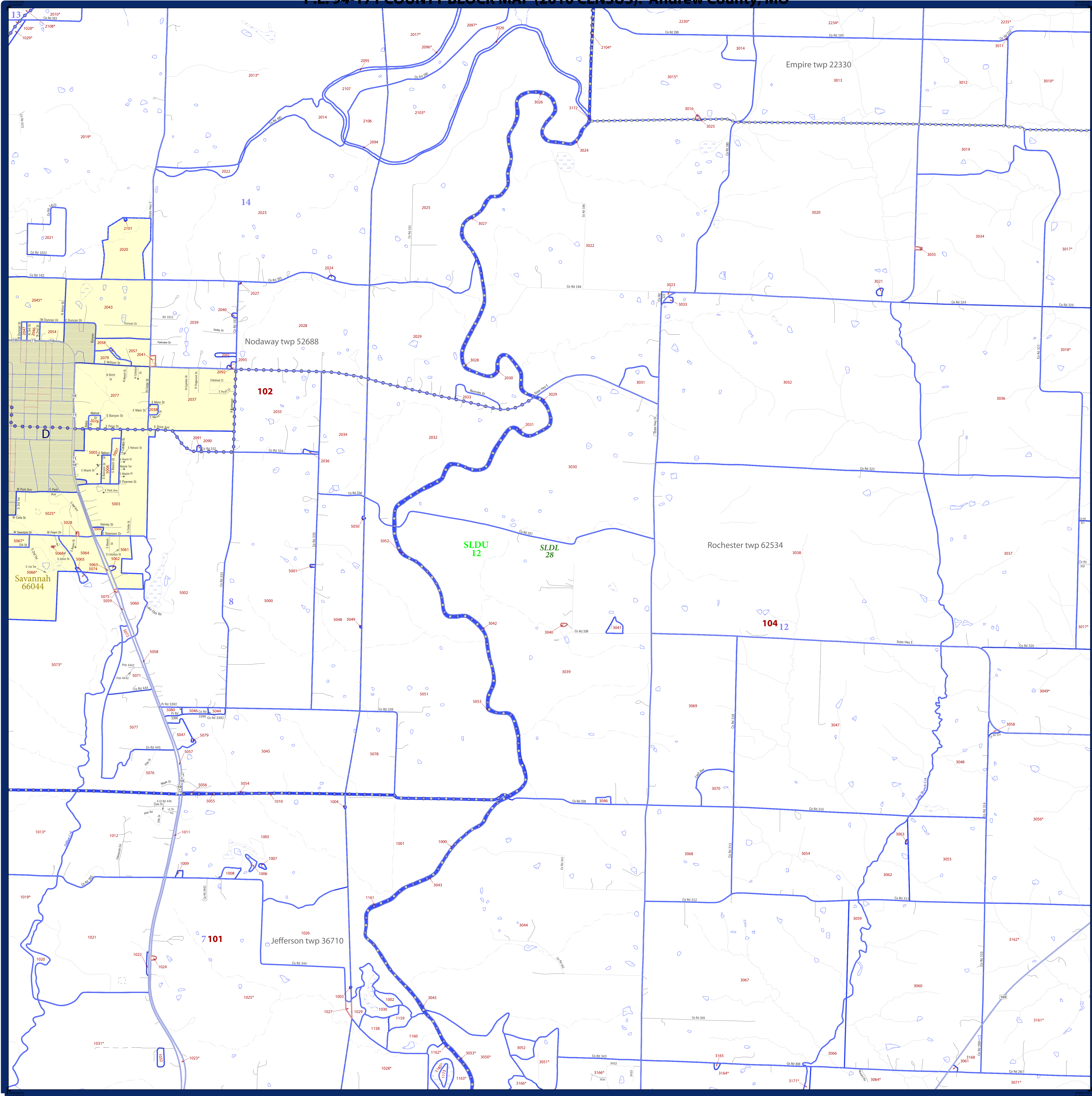
PARENT SHEET 10  
 Total Sheets: 23  
 Index Sheets: 1  
 Parent Sheets: 15  
 Inset Sheets: 7

USCENSUSBUREAU

NAME: Andrew County (003)  
 ENTITY TYPE: County or statistically equivalent entity  
 ST: Missouri (29)

2010 PL BLOCK MAP (PARENT)  
 201000010

P.L. 94-171 COUNTY BLOCK MAP (2010 CENSUS): Andrew County, MO



LEGEND	
SYMBOL DESCRIPTION	SYMBOL
Federal American Indian Reservation	*****
Off-Reservation Trust Land, Hawaiian Home Land	+++++
Oklahoma Tribal Statistical Area, Alaska Native Village Statistical Area, Tribal Designated Statistical Area	●●●●●
American Indian Tribal Subdivision	●●●●●
State American Indian Reservation	//////
State Designated Tribal Statistical Area	◆◆◆◆◆
Alaska Native Regional Corporation	▼▼▼▼▼
State (or statistically equivalent entity)	
County (or statistically equivalent entity)	□□□□□
Minor Civil Division (MCD) <sup>1</sup>	○ ○ ○ ○ ○
Census County Division (CCD), Census Subarea (CSA), Unorganized Territory (UT)	○ ○ ○ ○ ○
Consolidated City	○ ○ ○ ○ ○
Incorporated Place <sup>1,2</sup>	■ ■ ■ ■ ■
Census Designated Place (CDP) <sup>2</sup>	■ ■ ■ ■ ■
Voting District (VTD)	● ● ● ● ●
State Legislative District - Upper (Senate)	■ ■ ■ ■ ■
State Legislative District - Lower (House)	▼ ▼ ▼ ▼ ▼
Census Tract	■ ■ ■ ■ ■
Census Block <sup>3</sup>	■ ■ ■ ■ ■

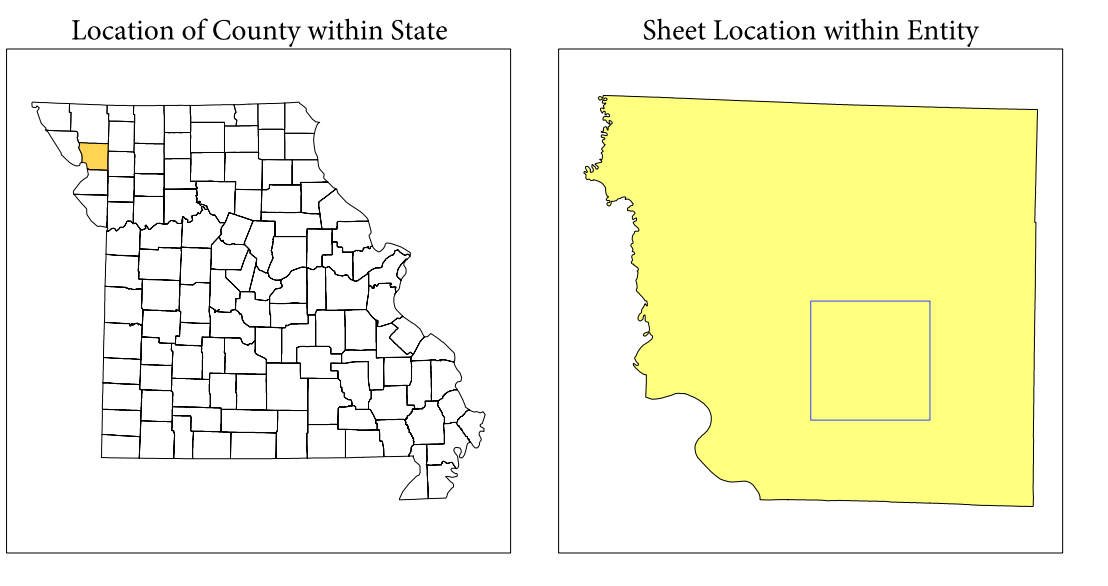
SYMBOL	DESCRIPTION	SYMBOL	DESCRIPTION
—	Interstate	—	Geographic Offset or Corridor
—	U.S. Highway	—	Water Body
—	State Highway	—	Swamp, Marsh, or Gravel Pit/Quarry
—	Other Road	—	Marsh Lot
—	Cul-de-sac	—	Glacier
○	Circle	—	Military
—	4WD Trail, Steamer, Alley, Walkway, or Ferry	—	National or State Park, Forest, or Recreation Area
—	Railroad	—	Airport
—	Pipeline or Power Line	—	Selected Mountain Peaks
—	Ridge or Fence	—	Inset Area
—	Property Line	—	Outside Subject Area
—	Perennial Stream	—	
—	Intermittent Stream	—	
—	Nonvisible Boundary or Feature Not Elsewhere Classified	—	

Where state, county, and/or MCD/CCD boundaries coincide, the map shows the boundary symbol for only the highest-ranking of these boundaries. Where American Indian reservation and American Indian tribal subdivision boundaries coincide, the map shows only the American Indian reservation boundaries. Where Oklahoma tribal statistical area boundaries and American Indian tribal subdivision boundaries coincide, the map shows only the Oklahoma tribal statistical area boundaries.

1 A " " following an MCD name denotes a false MCD. A " " following a place name indicates that a false MCD exists with the same name and FIPS code as the place; the false MCD label is not shown.

2 Place label color correlates to the place fill color.

3 A " " following a block number indicates that the block number is repeated elsewhere in the block.



All legal boundaries and names are as of January 1, 2010. The boundaries shown on this map are for Census Bureau statistical data collection and tabulation purposes only; their depiction and designation for statistical purposes does not constitute a determination of jurisdictional authority or rights of ownership or entitlement.

Geographic Vintage: 2010 Census (reference date: January 1, 2010)  
 Data Source: U.S. Census Bureau's MAINTIGR database (TAB100229)  
 Map Created by Geography Division: November 16, 2010

U.S. DEPARTMENT OF COMMERCE Economics and Statistics Administration U.S. Census Bureau

Projection: Albers Equal Area Conic  
 Datum: NAD 83  
 Spheroid: GRS 80  
 1st Standard Parallel: 36 45 55  
 2nd Standard Parallel: 39 50 38  
 Central Meridian: -92 51 50  
 Latitude of Projection's Origin: 35 59 44  
 False Easting: 0  
 False Northing: 0

Key to Sheets

6	7	8
10	11	12
13	14	15

PARENT SHEET 11  
 Total Sheets: 23  
 Index Sheets: 1  
 Parent Sheets: 15  
 Inset Sheets: 7

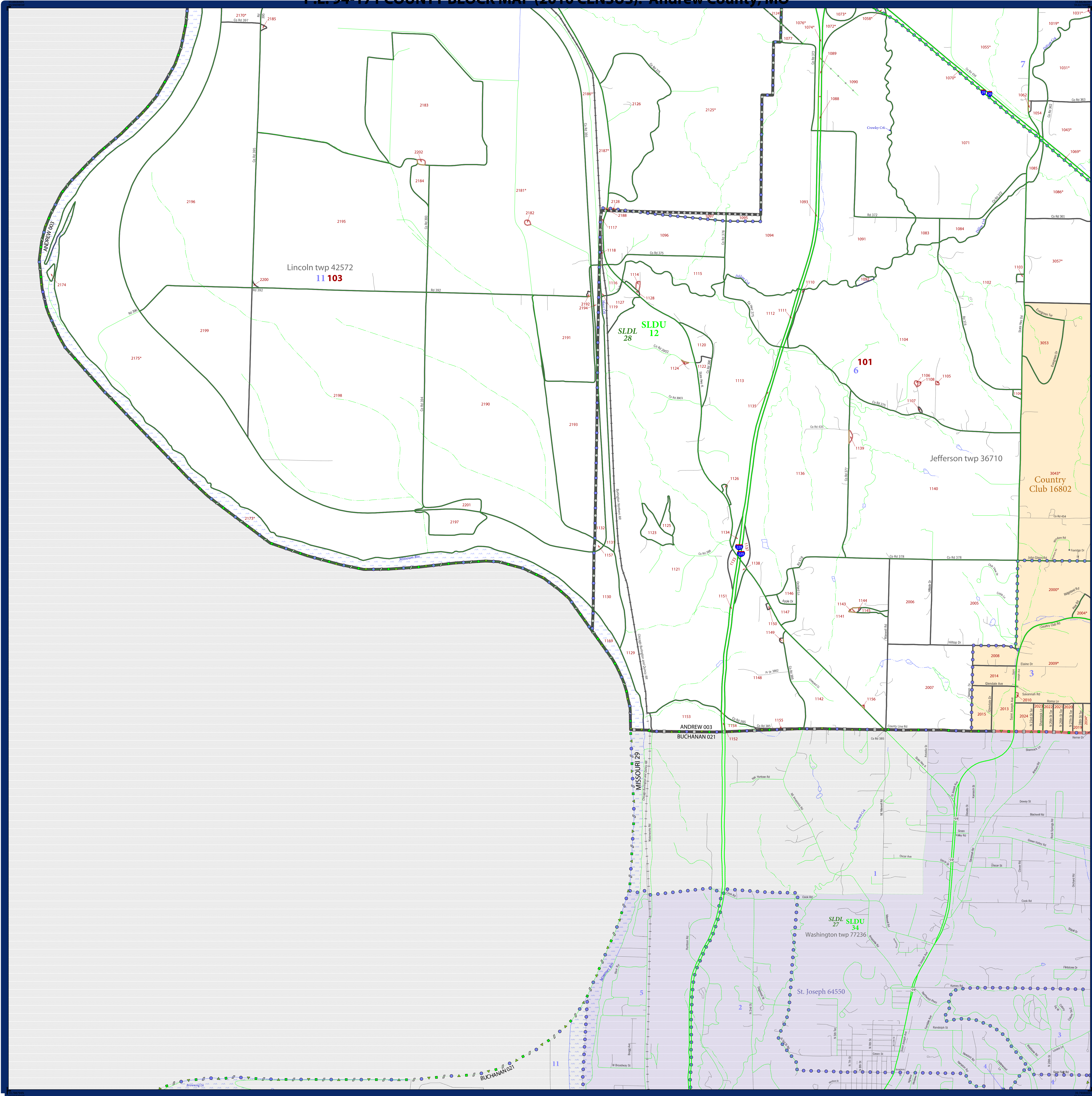
U.S. DEPARTMENT OF COMMERCE Economics and Statistics Administration U.S. Census Bureau

NAME: Andrew County (003)  
 ENTITY TYPE: County or statistically equivalent entity  
 ST: Missouri (29)

2010 PL BLOCK MAP (PARENT)  
 2010000011



P.L. 94-171 COUNTY BLOCK MAP (2010 CENSUS): Andrew County, MO



**LEGEND**

SYMBOL DESCRIPTION	SYMBOL	LABEL STYLE
Federal American Indian Reservation	*****	L'ANSE RES 1880
Off-Reservation Trust Land, Hawaiian Home Land	+++++	T1880
Oklahoma Tribal Statistical Area, Alaska Native Village Statistical Area, Tribal Designated Statistical Area	◆◆◆◆◆	KAW OTSA 5340
American Indian Tribal Subdivision	●●●●●	EAGLE NEST DIST 200
State American Indian Reservation	//////	Tama Res 4125
State Designated Tribal Statistical Area	◆◆◆◆◆	Lumbee STSA 9815
Alaska Native Regional Corporation	▼▼▼▼▼	NANA ANRC 52120
State (or statistically equivalent entity)		NEW YORK 36
County (or statistically equivalent entity)	□□□□□	ERIE 029
Minor Civil Division (MCD) <sup>1</sup>	○ ○ ○ ○ ○	Bristol town 07485
Census County Division (CCD), Census Subarea (CSA), Unorganized Territory (UT)	○ ○ ○ ○ ○	Jemez CCD 91650
Consolidated City	○ ○ ○ ○ ○	MILFORD 47500
Incorporated Place <sup>1,2</sup>	■ ■ ■ ■ ■	Davis 18100
Census Designated Place (CDP) <sup>2</sup>	■ ■ ■ ■ ■	Incline Village 35100
Voting District (VTD)	● ● ● ● ●	100015
State Legislative District - Upper (Senate)	■ ■ ■ ■ ■	SLDU 14
State Legislative District - Lower (House)	▼ ▼ ▼ ▼ ▼	SLDL 26
Census Tract	■ ■ ■ ■ ■	33.07
Census Block <sup>3</sup>	■ ■ ■ ■ ■	3012

DESCRIPTION	SYMBOL	DESCRIPTION	SYMBOL
Interstate	— 4 —	Geographic Offset or Corridor	— A —
U.S. Highway	— 2 —	Water Body	— Blue Lake —
State Highway	— 1 —	Swamp, Marsh, or Gravel Pit/Quarry	— Yellow Swamp —
Other Road	— 0 —	Marsh Lot	— Blue Swamp —
Cul-de-sac	— T —	Glacier	— Blue Glacier —
Circle	— C —	Military	— Fort Belvoir —
4WD Trail, Stairway, Alley, Walkway, or Ferry	— Dashed —	National or State Park, Forest, or Recreation Area	— Yosemite NP —
Railroad	— R —	Airport	— Airport —
Pipeline or Power Line	— P —	Selected Mountain Peaks	— A —
Ridge or Fence	— F —	Inset Area	— A —
Property Line	— Dashed —	Outside Subject Area	— A —
Perennial Stream	— Blue Cr —		
Intermittent Stream	— Blue Cr —		
Nonvisible Boundary or Feature Not Elsewhere Classified	— Dashed —		

Where state, county, and/or MCD/CCD boundaries coincide, the map shows the boundary symbol for only the highest-ranking of these boundaries. Where American Indian reservation and American Indian tribal subdivision boundaries coincide, the map shows only the American Indian reservation boundaries. Where Oklahoma tribal statistical area boundaries and American Indian tribal subdivision boundaries coincide, the map shows only the Oklahoma tribal statistical area boundaries.

1 A " " following an MCD name denotes a false MCD. A " " following a place name indicates that a false MCD exists with the same name and FIPS code as the place; the false MCD label is not shown.

2 Place label color correlates to the place fill color.

3 A " " following a block number indicates that the block number is repeated elsewhere in the block.

All legal boundaries and names are as of January 1, 2010. The boundaries shown on this map are for Census Bureau statistical data collection and tabulation purposes only; their depiction and designation for statistical purposes does not constitute a determination of jurisdictional authority or rights of ownership or entitlement.

Geographic Vintage: 2010 Census (reference date: January 1, 2010)  
 Data Source: U.S. Census Bureau's MA7/TIGER database (TAB100229)  
 Map Created by Geography Division: November 16, 2010

U.S. DEPARTMENT OF COMMERCE Economics and Statistics Administration U.S. Census Bureau

Projection: Albers Equal Area Conic  
 Datum: NAD 83  
 Spheroid: GRS 80  
 1st Standard Parallel: 36 45 55  
 2nd Standard Parallel: 39 50 38  
 Central Meridian: -92 51 50  
 Latitude of Projection's Origin: 35 59 44  
 False Easting: 0  
 False Northing: 0

0 0.4 0.8 1.2 1.6 2 Kilometers  
 0 0.2 0.4 0.6 0.8 1 Miles

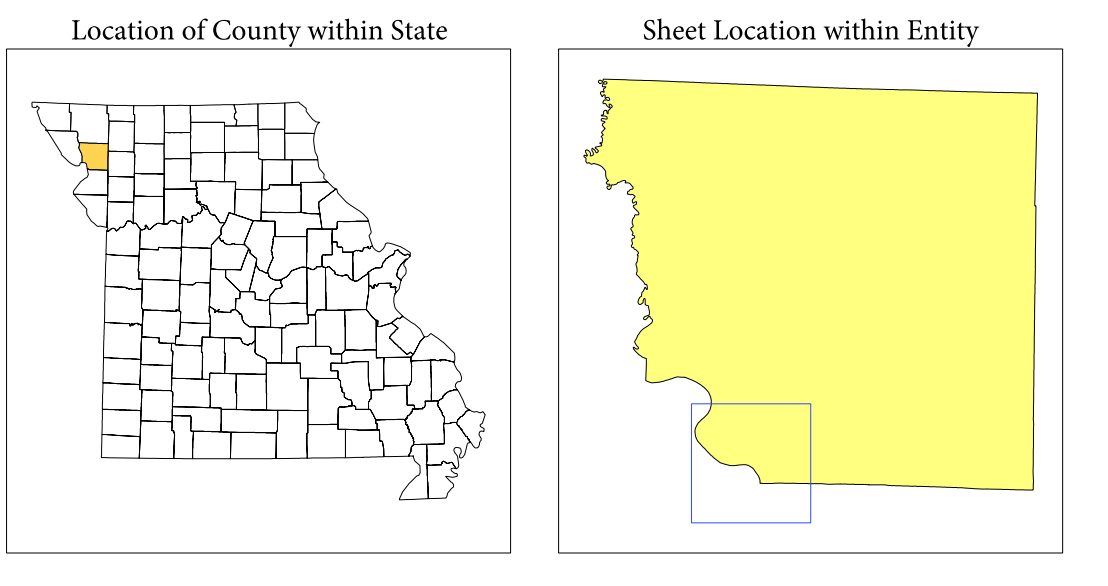
The plotted map scale is 1:180000

U.S. CENSUS BUREAU

Key to Sheets

9	10	11
13	14	

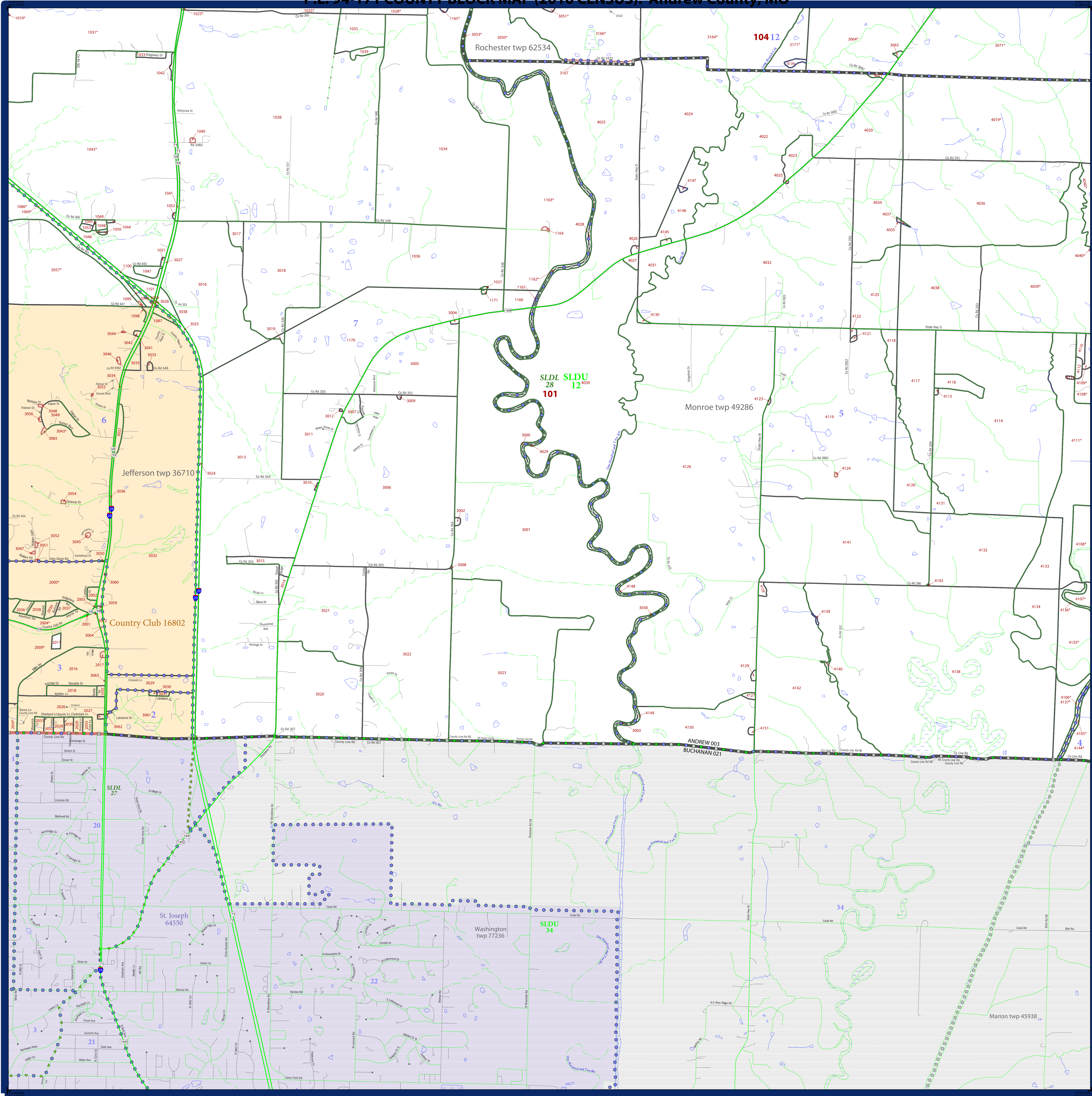
PARENT SHEET 13  
 Total Sheets: 23  
 Index Sheets: 1  
 Parent Sheets: 15  
 Inset Sheets: 7



NAME: Andrew County (003)  
 ENTITY TYPE: County or statistically equivalent entity  
 ST: Missouri (29)

2010 PL. BLOCK MAP (PARENT)  
 201000013

P.L. 94-171 COUNTY BLOCK MAP (2010 CENSUS): Andrew County, MO



LEGEND	
SYMBOL DESCRIPTION	SYMBOL
Federal American Indian Reservation	*****
Off-Reservation Trust Land, Hawaiian Home Land	+ + + + +
Oklahoma Tribal Statistical Area, Alaska Native Village Statistical Area, Tribal Designated Statistical Area	◆◆◆◆◆
American Indian Tribal Subdivision	●●●●●
State American Indian Reservation	///////
State Designated Tribal Statistical Area	◆◆◆◆◆
Alaska Native Regional Corporation	▼▼▼▼▼
State (or statistically equivalent entity)	
County (or statistically equivalent entity)	□□□□□
Minor Civil Division (MCD) <sup>1</sup>	○○○○○
Census County Division (CCD), Census Subarea (CSA), Unorganized Territory (UT)	○○○○○
Consolidated City	○○○○○
Incorporated Place <sup>1,2</sup>	■■■■■
Census Designated Place (CDP) <sup>2</sup>	■■■■■
Voting District (VTD)	●●●●●
State Legislative District - Upper (Senate)	■
State Legislative District - Lower (House)	▲
Census Tract	■
Census Block <sup>3</sup>	■

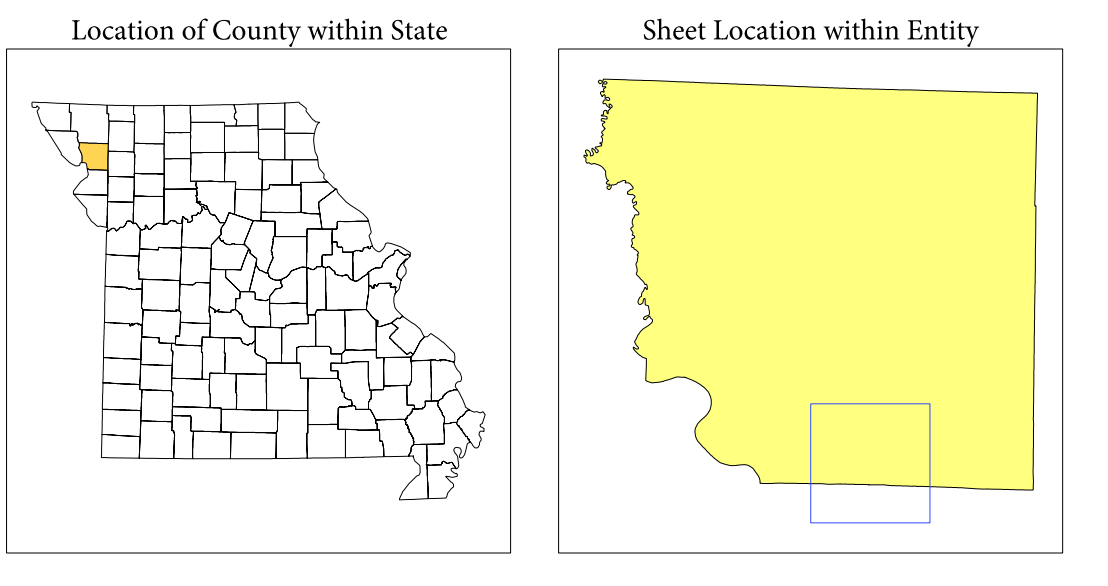
DESCRIPTION	SYMBOL	DESCRIPTION	SYMBOL
Interstate	—	Geographic Offset or Corridor	—
U.S. Highway	—	Water Body	—
State Highway	—	Swamp, Marsh, or Gravel Pit/Quarry	—
Other Road	—	Marsh Lot	—
Cul-de-sac	—	Glacier	—
Circle	—	Military	—
4WD Trail, Steamer, Alley, Walkway, or Ferry	—	National or State Park, Forest, or Reservation Area	—
Railroad	—	Airport	—
Pipeline or Power Line	—	Selected Mountain Peaks	—
Ridge or Fence	—	Inset Area	—
Property Line	—	Outside Subject Area	—
Perennial Stream	—		
Intermittent Stream	—		
Nonvisible Boundary or Feature Not Elsewhere Classified	—		

Where state, county, and/or MCD/CCD boundaries coincide, the map shows the boundary symbol for only the highest-ranking of these boundaries. Where American Indian reservation and American Indian tribal subdivision boundaries coincide, the map shows only the American Indian reservation boundaries. Where Oklahoma tribal statistical area boundaries and American Indian tribal subdivision boundaries coincide, the map shows only the Oklahoma tribal statistical area boundaries.

1. A \* following an MCD name denotes a false MCD. A \* following a place name indicates that a false MCD exists with the same name and FIPS code as the place; the false MCD label is not shown.

2. Place label color correlates to the place fill color.

3. A \* following a block number indicates that the block number is repeated elsewhere in the block.



All legal boundaries and names are as of January 1, 2010. The boundaries shown on this map are for Census Bureau statistical data collection and tabulation purposes only; their depiction and designation for statistical purposes does not constitute a determination of jurisdictional authority or rights of ownership or entitlement.

Geographic Vintage: 2010 Census (reference date: January 1, 2010)  
 Data Source: U.S. Census Bureau's MAI/TIGER database (TAB100229)  
 Map Created by Geography Division: November 16, 2010

Projection: Albers Equal Area Conic  
 Datum: NAD 83  
 Spheroid: GRS 80  
 1st Standard Parallel: 36 45 55  
 2nd Standard Parallel: 39 50 38  
 Central Meridian: -92 51 50  
 Latitude of Projection's Origin: 35 59 44  
 False Easting: 0  
 False Northing: 0

The plotted map scale is 1:180,000

U.S. DEPARTMENT OF COMMERCE Economics and Statistics Administration U.S. Census Bureau

Key to Sheets

10	11	12
13	14	15

PARENT SHEET 14  
 Total Sheets: 23  
 Index Sheets: 1  
 Parent Sheets: 15  
 Inset Sheets: 7

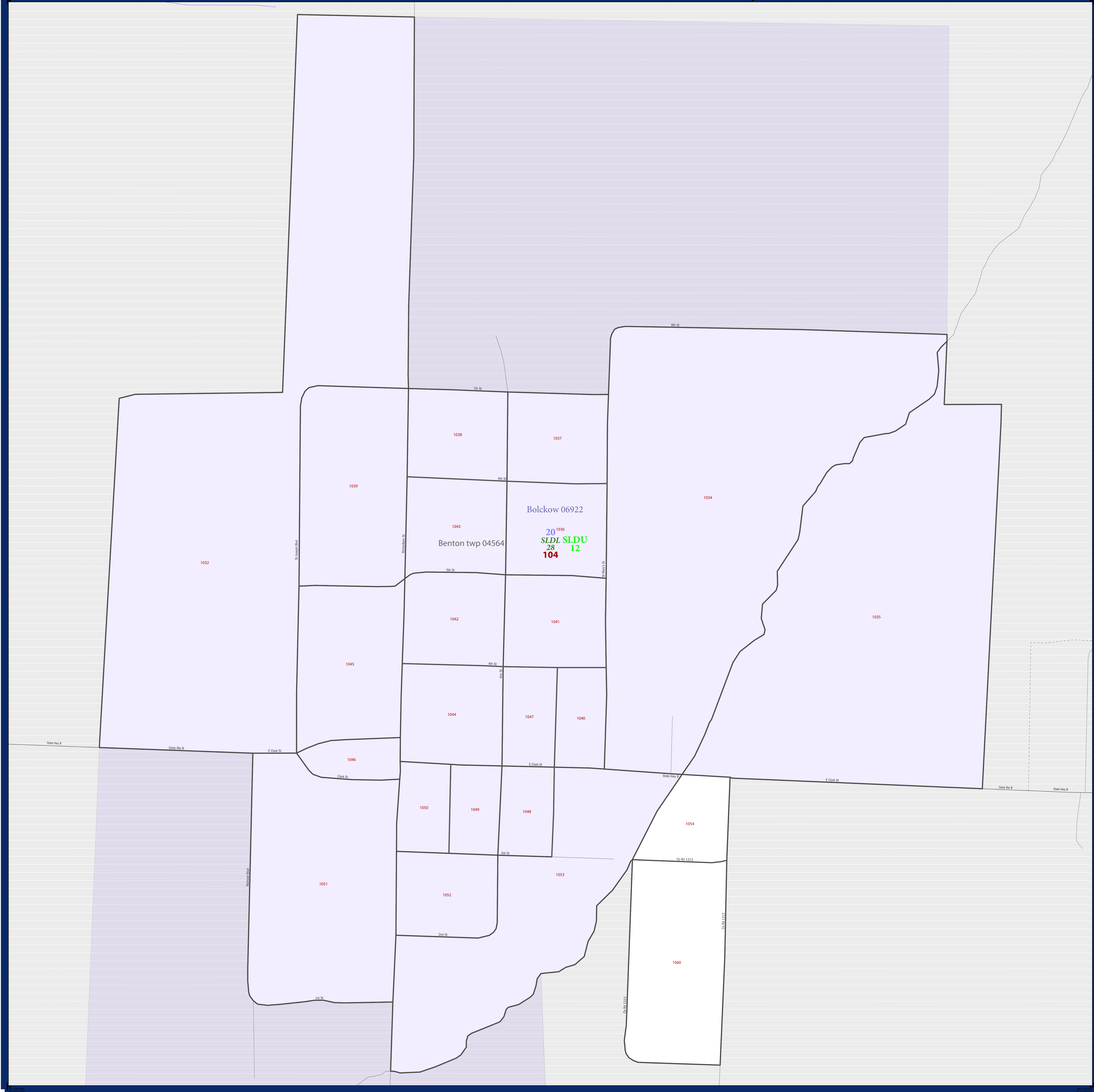
NAME: Andrew County (003)  
 ENTITY TYPE: County or statistically equivalent entity  
 ST: Missouri (29)

2010 PL BLOCK MAP (PARENT) 201000014





P.L. 94-171 COUNTY BLOCK MAP (2010 CENSUS): Andrew County, MO



LEGEND		
SYMBOL DESCRIPTION	SYMBOL	LABEL STYLE
Federal American Indian Reservation	*****	L'ANSE RES 1880
Off-Reservation Trust Land, Hawaiian Home Land	+ + + + +	T1880
Oklahoma Tribal Statistical Area, Alaska Native Village Statistical Area, Tribal Designated Statistical Area	◆◆◆◆◆	KAW OTSA 5340
American Indian Tribal Subdivision	●●●●●	EAGLE NEST DIST 200
State American Indian Reservation	///////	Tama Res 4125
State Designated Tribal Statistical Area	◆◆◆◆◆	Lumbee STSA 9815
Alaska Native Regional Corporation	▼▼▼▼▼	NANA ANRC 52120
State (or statistically equivalent entity)		NEW YORK 36
County (or statistically equivalent entity)	□□□□□	ERIE 029
Minor Civil Division (MCD) <sup>1</sup>	○ ○ ○ ○ ○	Bristol town 07485
Census County Division (CCD), Census Subarea (CSA), Unorganized Territory (UT)	○ ○ ○ ○ ○	Jemez CCD 91650
Consolidated City	○ ○ ○ ○ ○	MILFORD 47500
Incorporated Place <sup>1,2</sup>	■ ■ ■ ■ ■	Davis 18100
Census Designated Place (CDP) <sup>2</sup>	■ ■ ■ ■ ■	Incline Village 35100
Voting District (VTD)	● ● ● ● ●	100015
State Legislative District - Upper (Senate)	■ ■ ■ ■ ■	SLDU 14
State Legislative District - Lower (House)	▼ ▼ ▼ ▼ ▼	SLDL 26
Census Tract	■ ■ ■ ■ ■	33.07
Census Block <sup>3</sup>	■ ■ ■ ■ ■	3012

DESCRIPTION	SYMBOL	DESCRIPTION	SYMBOL
Interstate	— 4 —	Geographic Offset or Corridor	— — — — —
U.S. Highway	— 2 —	Water Body	— Blue Line —
State Highway	— 1 —	Swamp, Marsh, or Gravel Pit/Quarry	— Dotted Blue —
Other Road	— — — — —	Marsh Ln	— Dotted Blue —
Cul-de-sac	— T —	Glacier	— Blue Line —
Circle	○	Military	— Blue Line —
4WD Trail, Stairway, Alley, Walkway, or Ferry	— Dotted —	National or State Park, Forest, or Recreation Area	— Green Line —
Railroad	— + + + + —	Airport	— Blue Line —
Pipeline or Power Line	— + + + + —	Selected Mountain Peaks	— Blue Line —
Ridge or Fence	— + + + + —	Inset Area	— Blue Line —
Property Line	— + + + + —	Outside Subject Area	— Blue Line —
Perennial Stream	— Blue Line —		
Intermittent Stream or Feature Not Elsewhere Classified	— Blue Line —		

Where state, county, and/or MCD/CCD boundaries coincide, the map shows the boundary symbol for only the highest-ranking of these boundaries. Where American Indian reservation and American Indian tribal subdivision boundaries coincide, the map shows only the American Indian reservation boundaries. Where Oklahoma tribal statistical area boundaries and American Indian tribal subdivision boundaries coincide, the map shows only the Oklahoma tribal statistical area boundaries.

1 A " " following an MCD name denotes a false MCD. A " " following a place name indicates that a false MCD exists with the same name and FIPS code as the place; the false MCD label is not shown.

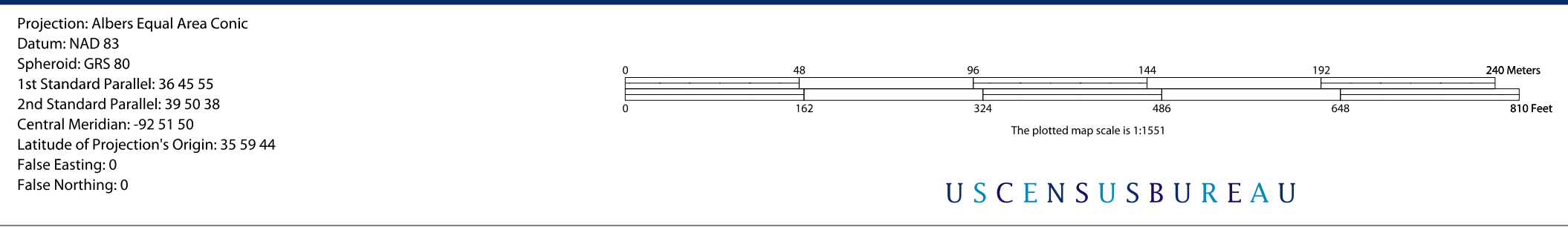
2 Place label color correlates to the place fill color.

3 A " " following a block number indicates that the block number is repeated elsewhere in the block.

All legal boundaries and names are as of January 1, 2010. The boundaries shown on this map are for Census Bureau statistical data collection and tabulation purposes only; their depiction and designation for statistical purposes does not constitute a determination of jurisdictional authority or rights of ownership or entitlement.

Geographic Vintage: 2010 Census (reference date: January 1, 2010)  
 Data Source: U.S. Census Bureau's MAINTIGER database (TAB100229)  
 Map Created by Geography Division: November 16, 2010

U.S. DEPARTMENT OF COMMERCE Economics and Statistics Administration U.S. Census Bureau



INSET SHEET A1  
 Total Sheets: 23  
 Index Sheets: 1  
 Parent Sheets: 15  
 Inset Sheets: 7

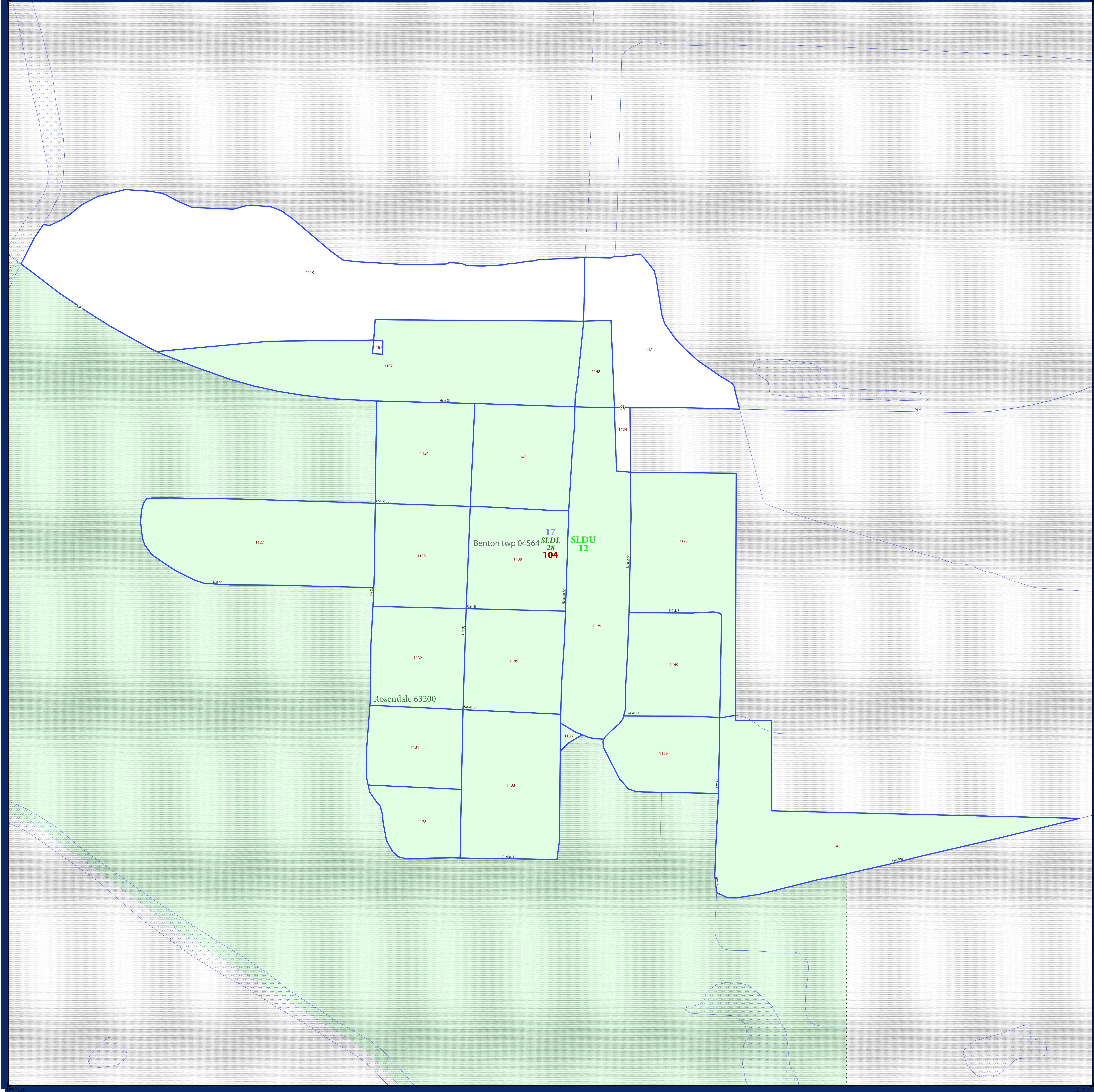
NAME: Andrew County (003)  
 ENTITY TYPE: County or statistically equivalent entity  
 ST: Missouri (29)

Location of County within State  
 Sheet Location within Entity

2010 PL BLOCK MAP (INSET)  
 20100902AM1



# P.L. 94-171 COUNTY BLOCK MAP (2010 CENSUS): Andrew County, MO



LEGEND		
SYMBOL DESCRIPTION	SYMBOL	LABEL STYLE
Federal American Indian Reservation	*****	L'ANSE RES 1880
Off-Reservation Trust Land, Hawaiian Home Land	+ + + + +	T1880
Oklahoma Tribal Statistical Area, Alaska Native Village Statistical Area, Tribal Designated Statistical Area	◆◆◆◆◆	KAW OTSA 5340
American Indian Tribal Subdivision	●●●●●	EAGLE NEST DIST 200
State American Indian Reservation	///////	Tama Res 4125
State Designated Tribal Statistical Area	◆◆◆◆◆	Lumbee STSA 9815
Alaska Native Regional Corporation	▼▼▼▼▼	NANA ANRC 52120
State (or statistically equivalent entity)		NEW YORK 36
County (or statistically equivalent entity)	□□□□□	ERIE 029
Minor Civil Division (MCD) <sup>1</sup>	○ ○ ○ ○ ○	Bristol town 07485
Census County Division (CCD), Census Subarea (CSA), Unorganized Territory (UT)	○ ○ ○ ○ ○	Jemez CCD 91650
Consolidated City	○ ○ ○ ○ ○	MILFORD 47500
Incorporated Place <sup>1,2</sup>	■ ■ ■ ■ ■	Davis 18100
Census Designated Place (CDP) <sup>2</sup>	■ ■ ■ ■ ■	Incline Village 35100
Voting District (VTD)	● ● ● ● ●	100015
State Legislative District - Upper (Senate)	■ ■ ■ ■ ■	SLDU 14
State Legislative District - Lower (House)	▼ ▼ ▼ ▼ ▼	SLDL 26
Census Tract	■ ■ ■ ■ ■	33.07
Census Block <sup>3</sup>	■ ■ ■ ■ ■	3012

DESCRIPTION	SYMBOL	DESCRIPTION	SYMBOL
Interstate	— 1 —	Geographic Offset or Corridor	—
U.S. Highway	— 2 —	Water Body	—
State Highway	— 3 —	Swamp, Marsh, or Gravel Pit/Quarry	—
Other Road	— 4 —	Marsh Lot	—
Cul-de-sac	— 5 —	Glacier	—
Circle	— 6 —	Military	—
4WD Trail, Stairway, Alley, Walkway, or Ferry	— 7 —	National or State Park, Forest, or Recreation Area	—
Railroad	— 8 —	Airport	—
Pipeline or Power Line	— 9 —	Selected Mountain Peaks	—
Ridge or Fence	— 10 —	Inset Area	—
Property Line	— 11 —	Outside Subject Area	—
Perennial Stream	— 12 —		
Intermittent Stream	— 13 —		
Nonvisible Boundary or Feature Not Elsewhere Classified	— 14 —		

Where state, county, and/or MCD/CCD boundaries coincide, the map shows the boundary symbol for only the highest-ranking of these boundaries. Where American Indian reservation and American Indian tribal subdivision boundaries coincide, the map shows only the American Indian reservation boundaries. Where Oklahoma tribal statistical area boundaries and American Indian tribal subdivision boundaries coincide, the map shows only the Oklahoma tribal statistical area boundaries.

1 A " " following an MCD name denotes a false MCD. A " " following a place name indicates that a false MCD exists with the same name and FIPS code as the place; the false MCD label is not shown.

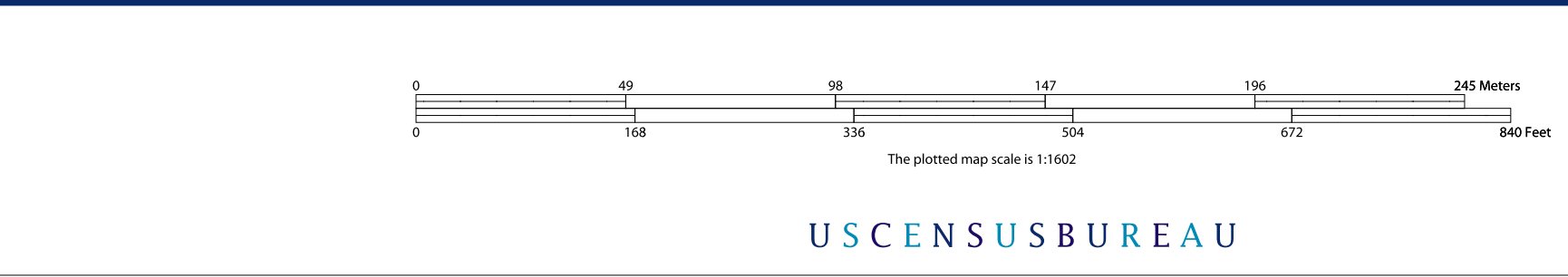
2 Place label color correlates to the place fill color.

3 A " " following a block number indicates that the block number is repeated elsewhere in the block.

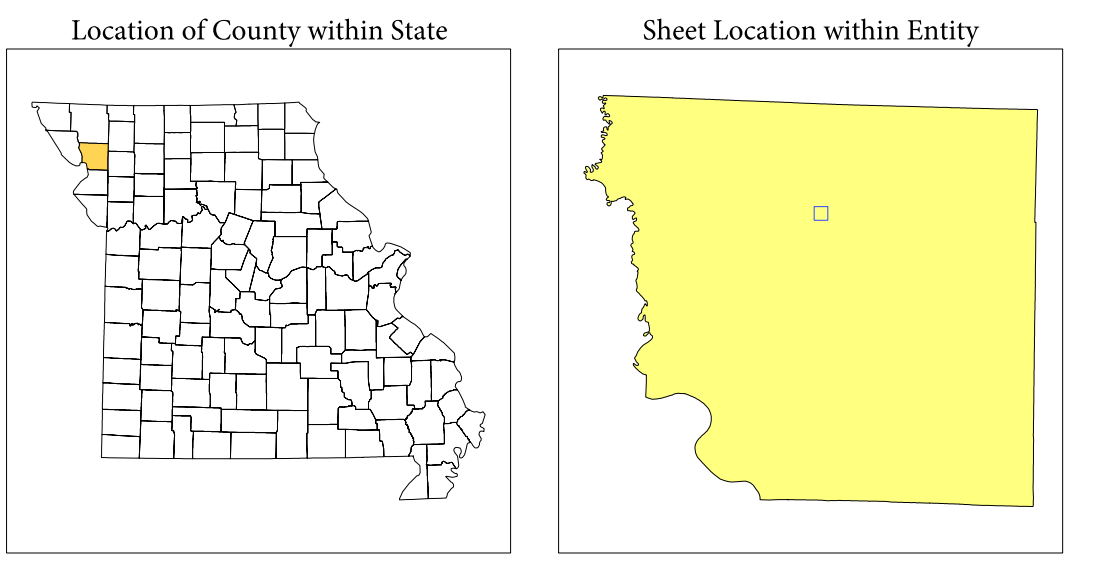
All legal boundaries and names are as of January 1, 2010. The boundaries shown on this map are for Census Bureau statistical data collection and tabulation purposes only; their depiction and designation for statistical purposes does not constitute a determination of jurisdictional authority or rights of ownership or entitlement.

Geographic Vintage: 2010 Census (reference date: January 1, 2010)  
 Data Source: U.S. Census Bureau's MAINTIGER database (TAB100229)  
 Map Created by Geography Division: November 16, 2010

U.S. DEPARTMENT OF COMMERCE Economics and Statistics Administration U.S. Census Bureau



INSET SHEET C1  
 Total Sheets: 23  
 Index Sheets: 1  
 Parent Sheets: 15  
 Inset Sheets: 7

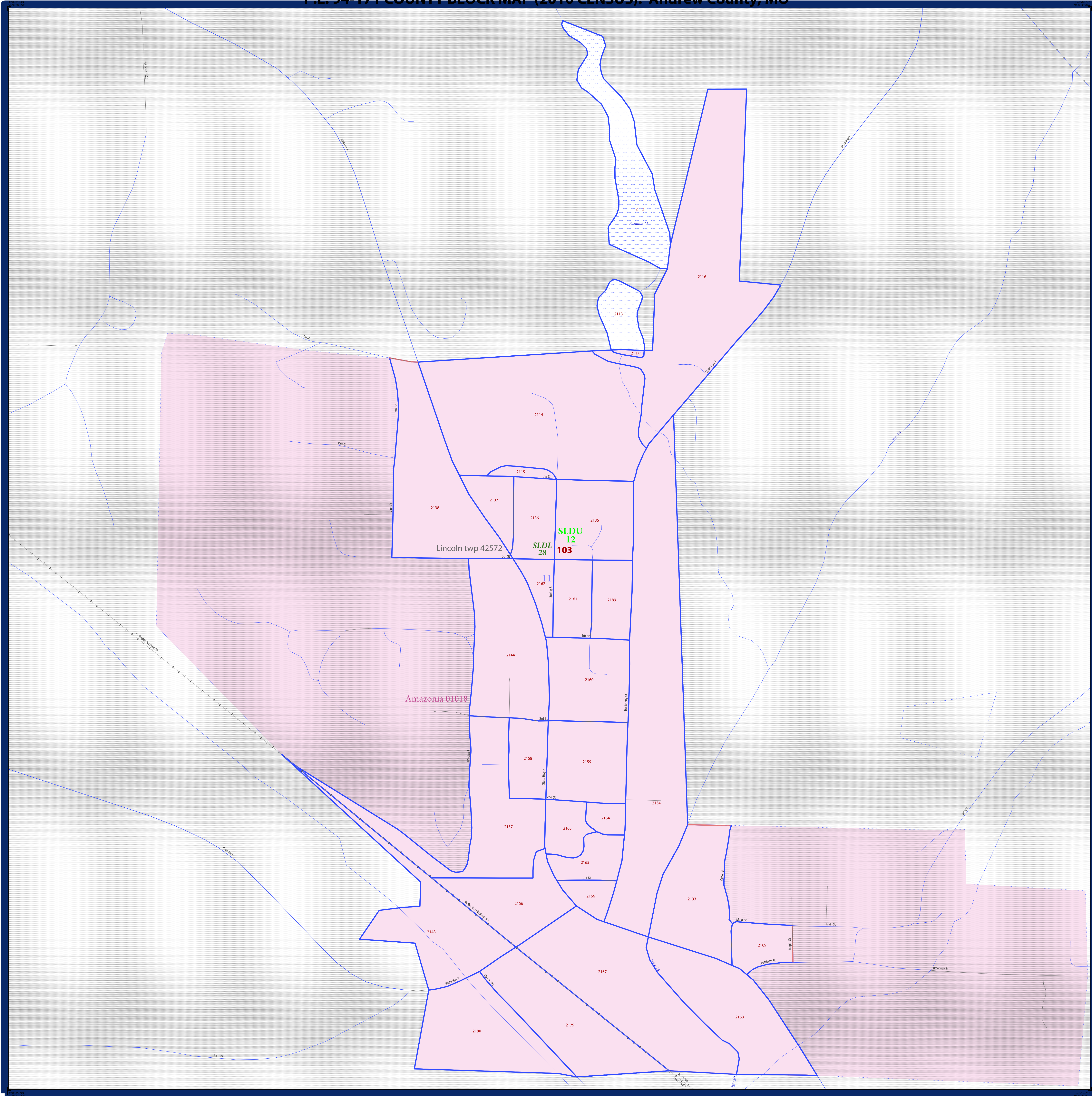


NAME: Andrew County (003)  
 ENTITY TYPE: County or statistically equivalent entity  
 ST: Missouri (29)

2010 PL BLOCK MAP (INSET)  
 2010MO003C1



# P.L. 94-171 COUNTY BLOCK MAP (2010 CENSUS): Andrew County, MO



LEGEND		
SYMBOL DESCRIPTION	SYMBOL	LABEL STYLE
Federal American Indian Reservation	*****	L'ANSE RES 1880
Off-Reservation Trust Land, Hawaiian Home Land	+ + + + +	T1880
Oklahoma Tribal Statistical Area, Alaska Native Village Statistical Area, Tribal Designated Statistical Area	◆◆◆◆◆	KAW OTSA 5340
American Indian Tribal Subdivision	●●●●●	EAGLE NEST DIST 200
State American Indian Reservation	///////	Tama Res 4125
State Designated Tribal Statistical Area	◆◆◆◆◆	Lumbee STSA 9815
Alaska Native Regional Corporation	▼▼▼▼▼	NANA ANRC 52120
State (or statistically equivalent entity)		NEW YORK 36
County (or statistically equivalent entity)	□□□□□	ERIE 029
Minor Civil Division (MCD) <sup>1</sup>	○ ○ ○ ○ ○	Bristol town 07485
Census County Division (CCD), Census Subarea (CSA), Unorganized Territory (UT)	○ ○ ○ ○ ○	Jemez CCD 91650
Consolidated City	○ ○ ○ ○ ○	MILFORD 47500
Incorporated Place <sup>1,2</sup>	■ ■ ■ ■ ■	Davis 18100
Census Designated Place (CDP) <sup>2</sup>	■ ■ ■ ■ ■	Incline Village 35100
Voting District (VTD)	● ● ● ● ●	100015
State Legislative District - Upper (Senate)	■ ■ ■ ■ ■	SLDU 14
State Legislative District - Lower (House)	▼ ▼ ▼ ▼ ▼	SLDL 26
Census Tract	■ ■ ■ ■ ■	33.07
Census Block <sup>3</sup>	■ ■ ■ ■ ■	3012

DESCRIPTION	SYMBOL	DESCRIPTION	SYMBOL
Interstate	— 4 —	Geographic Offset or Corridor	— — — — —
U.S. Highway	— 2 —	Water Body	— [Blue] —
State Highway	— 1 —	Swamp, Marsh, or Gravel Pit/Quarry	— [Blue] —
Other Road	— 0 —	Marsh Ln	— [Blue] —
Cul-de-sac	— T —	Glacier	— [Blue] —
Circle	— ○ —	Military	— [Blue] —
4WD Trail, Stairway, Alley, Walkway, or Ferry	— [Blue] —	National or State Park, Forest, or Recreation Area	— [Blue] —
Railroad	— [Blue] —	Airport	— [Blue] —
Pipeline or Power Line	— [Blue] —	Selected Mountain Peaks	— [Blue] —
Ridge or Fence	— [Blue] —	Inset Area	— [Blue] —
Property Line	— [Blue] —	Outside Subject Area	— [Blue] —
Perennial Stream	— [Blue] —		
Intermittent Stream	— [Blue] —		
Nonvisible Boundary or Feature Not Elsewhere Classified	— [Blue] —		

Where state, county, and/or MCD/CCD boundaries coincide, the map shows the boundary symbol for only the highest-ranking of these boundaries. Where American Indian reservation and American Indian tribal subdivision boundaries coincide, the map shows only the American Indian reservation boundaries. Where Oklahoma tribal statistical area boundaries and American Indian tribal subdivision boundaries coincide, the map shows only the Oklahoma tribal statistical area boundaries.

1 A " " following an MCD name denotes a false MCD. A " " following a place name indicates that a false MCD exists with the same name and FIPS code as the place; the false MCD label is not shown.

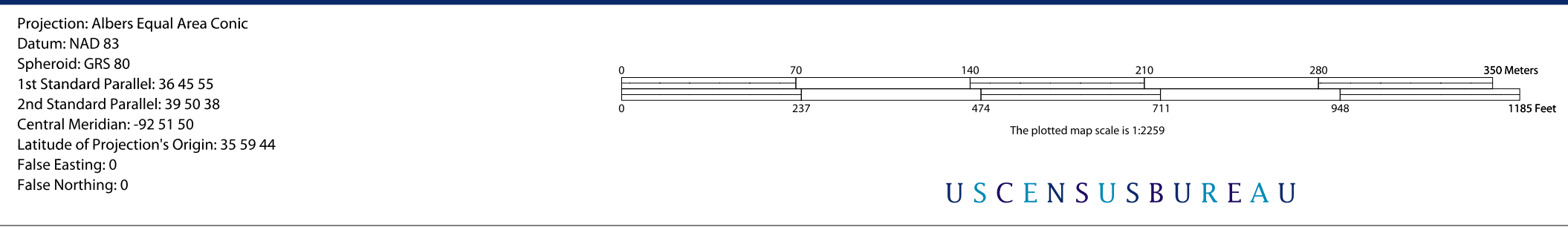
2 Place label color correlates to the place fill color.

3 A " " following a block number indicates that the block number is repeated elsewhere in the block.

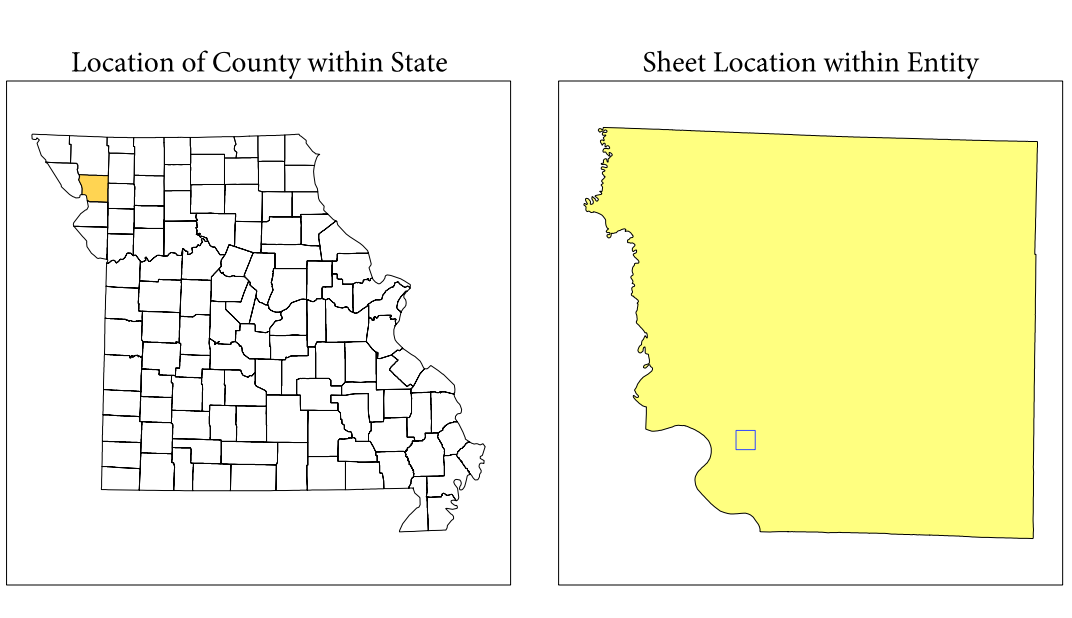
All legal boundaries and names are as of January 1, 2010. The boundaries shown on this map are for Census Bureau statistical data collection and tabulation purposes only; their depiction and designation for statistical purposes does not constitute a determination of jurisdictional authority or rights of ownership or entitlement.

Geographic Vintage: 2010 Census (reference date: January 1, 2010)  
 Data Source: U.S. Census Bureau's MAINTIGER database (TAB100229)  
 Map Created by Geography Division: November 16, 2010

U.S. DEPARTMENT OF COMMERCE Economics and Statistics Administration U.S. Census Bureau



INSET SHEET E1  
 Total Sheets: 23  
 Index Sheets: 1  
 Parent Sheets: 15  
 Inset Sheets: 7

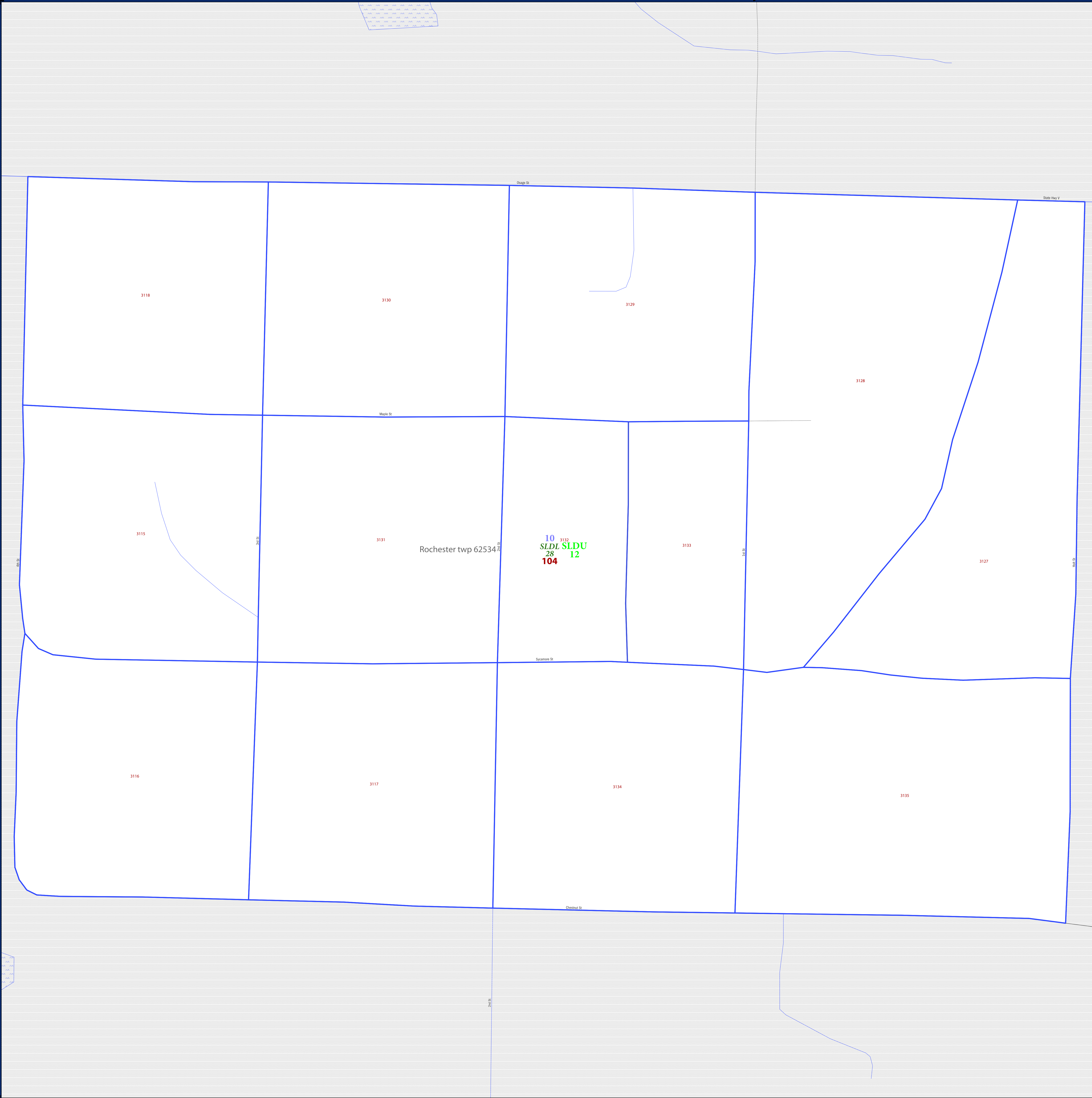


NAME: Andrew County (003)  
 ENTITY TYPE: County or statistically equivalent entity  
 ST: Missouri (29)

2010 PL BLOCK MAP (INSET)  
 2010090101



# P.L. 94-171 COUNTY BLOCK MAP (2010 CENSUS): Andrew County, MO



### LEGEND

SYMBOL DESCRIPTION	SYMBOL	LABEL STYLE
Federal American Indian Reservation	*****	L'ANSE RES 1880
Off-Reservation Trust Land, Hawaiian Home Land	+ + + + +	T1880
Oklahoma Tribal Statistical Area, Alaska Native Village Statistical Area, Tribal Designated Statistical Area	◆◆◆◆◆	KAW OTSA 5340
American Indian Tribal Subdivision	●●●●●	EAGLE NEST DIST 200
State American Indian Reservation	///////	Tama Res 4125
State Designated Tribal Statistical Area	◆◆◆◆◆	Lumbee STSA 9815
Alaska Native Regional Corporation	▼▼▼▼▼	NANA ANRC 52120
State (or statistically equivalent entity)		NEW YORK 36
County (or statistically equivalent entity)	□□□□□	ERIE 029
Minor Civil Division (MCD) <sup>1</sup>	○ ○ ○ ○ ○	Bristol town 07485
Census County Division (CCD), Census Subarea (CSA), Unorganized Territory (UT)	○ ○ ○ ○ ○	Jemez CCD 91650
Consolidated City	○ ○ ○ ○ ○	MILFORD 47500
Incorporated Place <sup>1,2</sup>	■ ■ ■ ■ ■	Davis 18100
Census Designated Place (CDP) <sup>2</sup>	■ ■ ■ ■ ■	Incline Village 35100
Voting District (VTD)	● ● ● ● ●	100015
State Legislative District - Upper (Senate)	■ ■ ■ ■ ■	SLDU 14
State Legislative District - Lower (House)	▼ ▼ ▼ ▼ ▼	SLDL 26
Census Tract	■ ■ ■ ■ ■	33.07
Census Block <sup>3</sup>	■ ■ ■ ■ ■	3012

DESCRIPTION	SYMBOL	DESCRIPTION	SYMBOL
Interstate	— 1 —	Geographic Offset or Corridor	—
U.S. Highway	— 2 —	Water Body	—
State Highway	— 3 —	Swamp, Marsh, or Gravel Pit/Quarry	—
Other Road	— 4 —	Marsh Ln	—
Cul-de-sac	— 5 —	Glacier	—
Circle	— 6 —	Military	—
4WD Trail, Stairway, Alley, Walkway, or Ferry	— 7 —	National or State Park, Forest, or Reservation Area	—
Railroad	— 8 —	Airport	—
Pipeline or Power Line	— 9 —	Selected Mountain Peaks	—
Ridge or Fence	— 10 —	Inset Area	—
Property Line	— 11 —	Outside Subject Area	—
Perennial Stream	— 12 —		
Intermittent Stream	— 13 —		
Nonvisible Boundary or Feature Not Elsewhere Classified	— 14 —		

Where state, county, and/or MCD/CCD boundaries coincide, the map shows the boundary symbol for only the highest-ranking of these boundaries. Where American Indian reservation and American Indian tribal subdivision boundaries coincide, the map shows only the American Indian reservation boundaries. Where Oklahoma tribal statistical area boundaries and American Indian tribal subdivision boundaries coincide, the map shows only the Oklahoma tribal statistical area boundaries.

1 A " " following an MCD name denotes a false MCD. A " " following a place name indicates that a false MCD exists with the same name and FIPS code as the place; the false MCD label is not shown.

2 Place label color correlates to the place fill color.

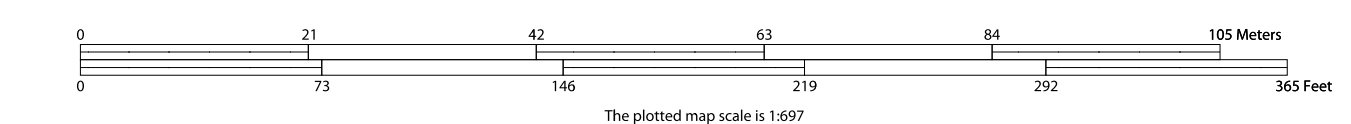
3 A " " following a block number indicates that the block number is repeated elsewhere in the block.

All legal boundaries and names are as of January 1, 2010. The boundaries shown on this map are for Census Bureau statistical data collection and tabulation purposes only; their depiction and designation for statistical purposes does not constitute a determination of jurisdictional authority or rights of ownership or entitlement.

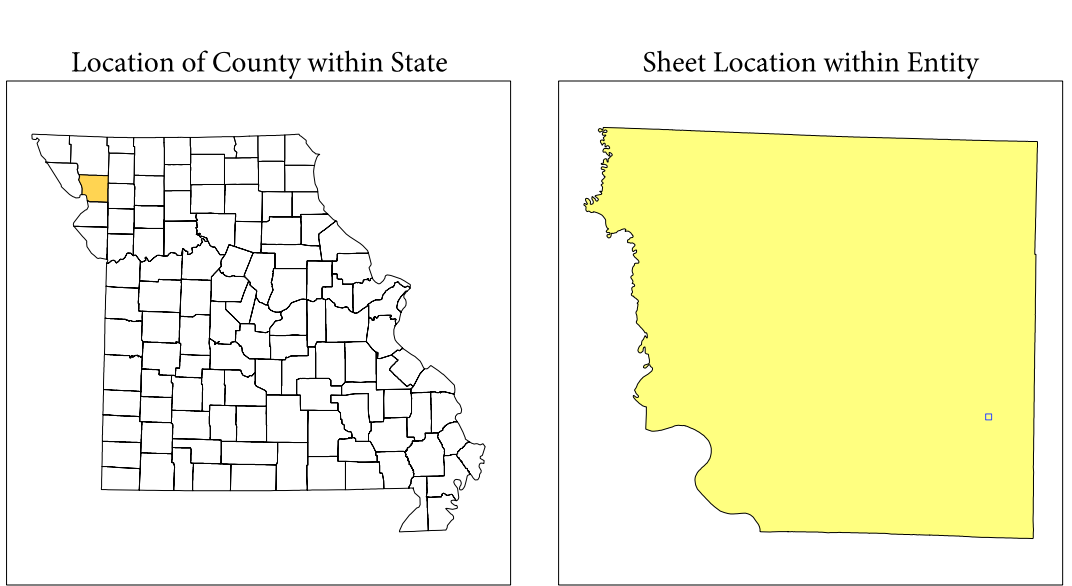
Geographic Vintage: 2010 Census (reference date: January 1, 2010)  
 Data Source: U.S. Census Bureau's MAINTIGER database (TAB10ST29)  
 Map Created by Geography Division: November 16, 2010

U.S. DEPARTMENT OF COMMERCE Economics and Statistics Administration U.S. Census Bureau

Projection: Albers Equal Area Conic  
 Datum: NAD 83  
 Spheroid: GRS 80  
 1st Standard Parallel: 36 45 55  
 2nd Standard Parallel: 39 50 38  
 Central Meridian: -92 51 50  
 Latitude of Projection's Origin: 35 59 44  
 False Easting: 0  
 False Northing: 0



INSET SHEET G1  
 Total Sheets: 23  
 Index Sheets: 1  
 Parent Sheets: 15  
 Inset Sheets: 7



NAME: Andrew County (003)  
 ENTITY TYPE: County or statistically equivalent entity  
 ST: Missouri (29)