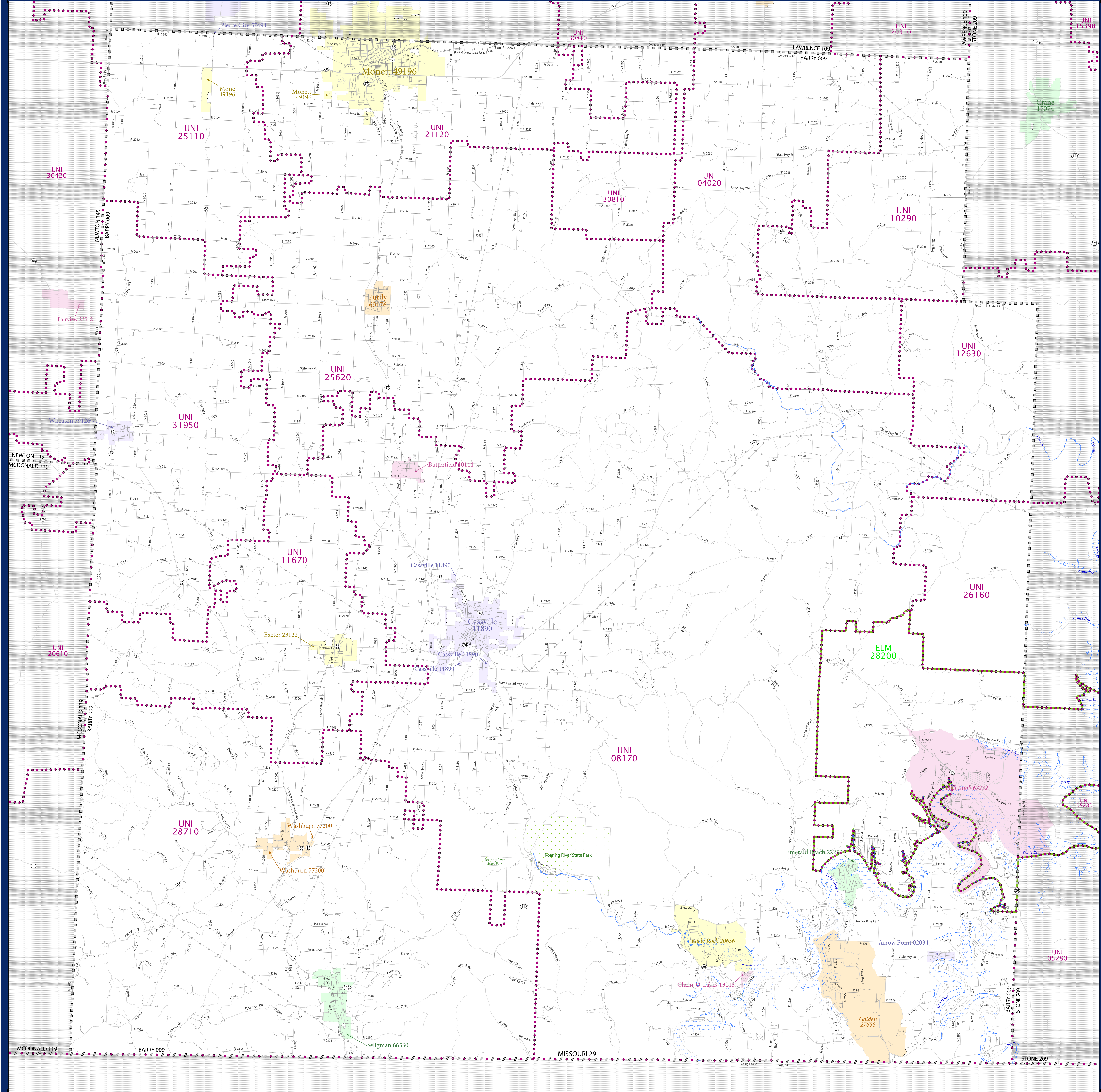


# SCHOOL DISTRICT REFERENCE MAP (2010 CENSUS): Barry County, MO



| SYMBOL DESCRIPTION                          |          | LEGEND   |          |
|---|----------|--|----------|
| Federal American Indian Reservation         | [Symbol] | Water Body   | [Symbol] |
| Off-Reservation Trust Land                  | [Symbol] | Swamp or Marsh                                     | [Symbol] |
| State American Indian Reservation           | [Symbol] | Glacier  | [Symbol] |
| Alaska Native Regional Corporation          | [Symbol] | Military   | [Symbol] |
| State (or statistically equivalent entity)  | [Symbol] | National or State Park, Forest, or Recreation Area | [Symbol] |
| County (or statistically equivalent entity) | [Symbol] | Inset Area   | [Symbol] |
| Minor Civil Division (MCD) <sup>1,2</sup>   | [Symbol] | Outside Subject Area                               | [Symbol] |
| Consolidated City                           | [Symbol] |  |          |
| Incorporated Place <sup>3</sup>             | [Symbol] |  |          |
| Census Designated Place (CDP) <sup>3</sup>  | [Symbol] |  |          |
| Unified School District                     | [Symbol] |  |          |
| Secondary School District                   | [Symbol] |  |          |
| Elementary School District                  | [Symbol] |  |          |

Where state, county, and/or MCD boundaries coincide, the map shows the boundary symbol for only the highest-ranking of these boundaries.

1 A "\*" following an MCD name denotes a false MCD. A "\*" following a place name indicates that a false MCD exists with the same name and FIPS code as the place; the false MCD label is not shown.

2 MCD boundaries are shown in the following states in which MCDs have functioning governments: Connecticut, Maine, Massachusetts, Michigan, Minnesota, New Hampshire, New Jersey, New York, Pennsylvania, Rhode Island, Vermont, and Wisconsin.

3 Place label color correlates to the place fill color.

| SCHOOL DISTRICTS WITHIN COUNTY |                                   |
|--------------------------------|-----------------------------------|
| TYPE                           | NAME                              |
| ELM                            | Shelby Knob 78 School District    |
| ELM                            | Aurora R-8 School District        |
| UNI                            | Cassville R-8 School District     |
| UNI                            | Crane R-8 School District         |
| UNI                            | Exeter R-8 School District        |
| UNI                            | Monett R-8 School District        |
| UNI                            | Pierce City R-IV School District  |
| UNI                            | Purdy R-8 School District         |
| UNI                            | Reeds Spring R-IV School District |
| UNI                            | Southwest F-IV School District    |
| UNI                            | Verona R-VII School District      |
| UNI                            | Wheaton R-8 School District       |



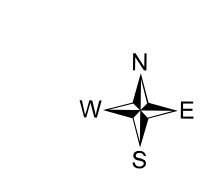
All legal boundaries and names are as of January 1, 2010. The boundaries shown on this map are for Census Bureau statistical data collection and tabulation purposes only; their depiction and designation for statistical purposes does not constitute a determination of jurisdictional authority or rights of ownership or entitlement.

Geographic: Vintage: 2010 Census (reference date: January 1, 2010)  
 Data Source: U.S. Census Bureau's MAINTENANCE database (TAB100123)  
 Map Created by Geography Division: December 08, 2010

U.S. DEPARTMENT OF COMMERCE Economics and Statistics Administration U.S. Census Bureau

Projection: Albers Equal Area Conic  
 Datum: NAD 83  
 Spheroid: GRS 80  
 1st Standard Parallel: 36 45 55  
 2nd Standard Parallel: 39 59 38  
 Central Meridian: -92 51 50  
 Latitude of Projection's Origin: 35 59 44  
 False Easting: 0  
 False Northing: 0

The plotted map scale is 1:20000



PARENT SHEET 1  
 Total Sheets: 1  
 Index Sheets: 0  
 Parent Sheets: 1  
 Inset Sheets: 0

NAME: Barry County (009)  
 ENTITY TYPE: County or statistically equivalent entity  
 ST: Missouri (29)